

Source: Okayama University (JAPAN), Public Relations and Information Strategy

For immediate release: 27 March 2018

Okayama University research: A protein found on the surface of cells plays an integral role in tumor growth and sustenance

(Okayama, 27 March) **Researchers at Okayama University describe in the journal *Scientific Reports* the role of an extracellular protein, versican, in regulating tumor growth and providing a newly formed network of blood vessels to further nourish the tumor.**

Angiogenesis is the creation of new blood vessels from the branching of pre-existing ones. This phenomenon is especially important in the context of cancer, because it supplies the tumors with additional oxygen and nutrients to keep them growing. An effective strategy in treating cancer would therefore be to prevent angiogenesis. However, factors in the tumor microenvironment that may boost angiogenesis are still poorly understood. The tumor microenvironment, is a mix of host tissue (stroma) and tumor cells.

A recent study in *Scientific Reports* by Professor Satoshi Hirohata *et al.* has found a link between angiogenesis and the tumor microenvironment, in the form of an extracellular matrix protein called versican. Versican is involved in several vascular processes, but its role regarding tumor angiogenesis isn't well understood. Professor Hirohata and his team members at Okayama University looked at different cancer cells lines, and found that although initially they all had varying amounts of versican, tumors derived from all the cell lines had amplified quantities of the protein. Using a technique called western blotting, they showed that a melanoma producing cell line B16F10, had very low levels of versican which increased drastically after tumor initiation, while a lung cancer cell line (LLC) had high levels of versican before tumor induction, which were even more pronounced after. Interestingly, it was found that all the tumors had versican which was at least partly derived from the stromal microenvironment.

After establishing the origins of tumor versican, the researchers noticed that versican was located in the vicinity of blood vessels, within tumors. It was also stationed specifically with macrophages (safe-guarding cells in the blood), suggesting that stromal macrophages might be producing it. Versican present in tumors was not only in its complete form, but also a smaller cleaved form, which is easily distinguishable from normal versican. Interestingly, distribution of cleaved versican was considerably different from that of intact form, indicating that cleaved versican in the tumor vessel may play a unique role for tumor angiogenesis. Finally, to see the direct effects of versican on tumor angiogenesis, the

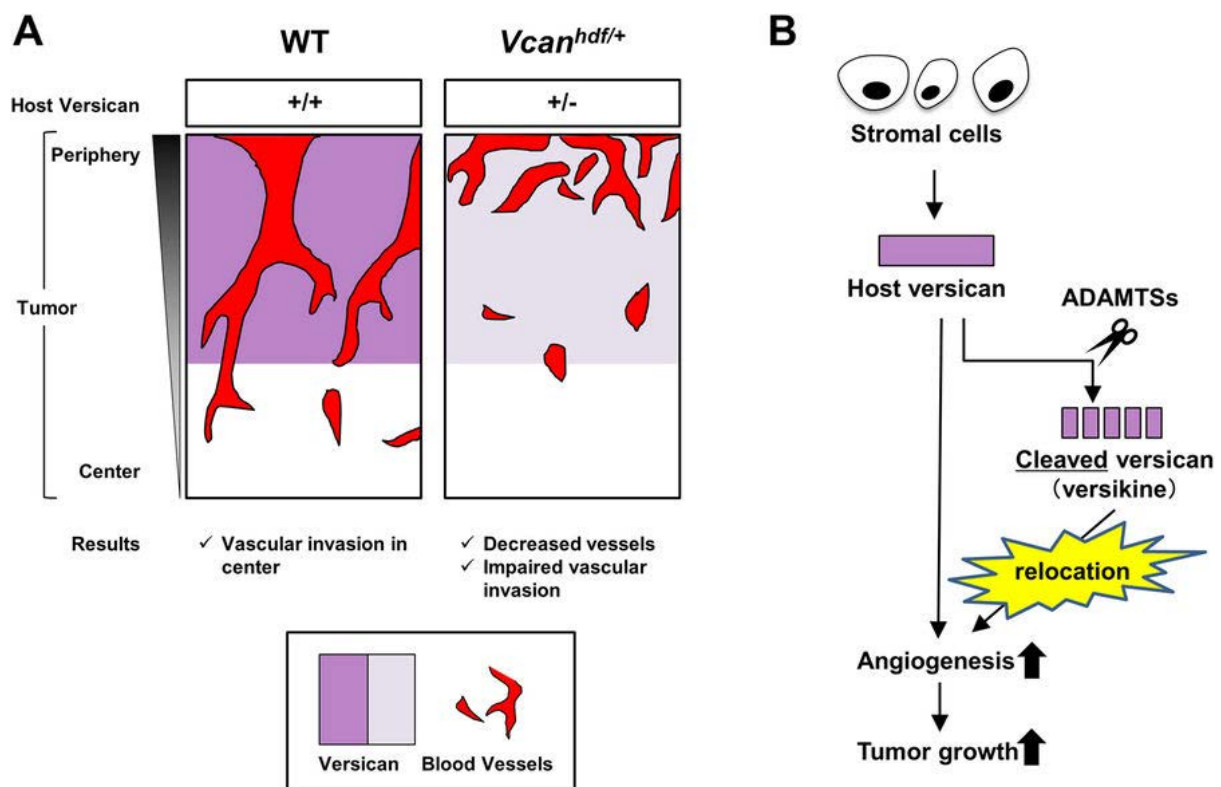
researchers compared two B16F10 genetic variants of mice: one that inherently produced versican, and one that could not. The latter had smaller tumor size and fewer blood vessels, strongly suggesting a firsthand involvement of versican with tumor angiogenesis.

This study has found yet another remarkable way in which cancer cells exploit host tissues to proliferate. “Our findings suggest that versican is an intriguing target to consider in combating tumor growth and angiogenesis”, conclude the authors optimistically.

Background

Stroma: Stroma refers to layers of cells which have a connective or supporting role in tissues. Stromal cells are generally make up the extracellular matrix and provide anchoring of blood vessels and nerves to nearby tissues.

Versican: Versican is a type of protein known as glycol-protein, found in the extracellular matrix. Structurally, it has five different forms and plays a role in cellular process of adhesion, helping cells make contact with other cell types.



Caption

High levels of versican are located with tumor blood vessels in normal B16F10 mice (WT), while the genetic variant unable to produce versican (*Vcan^{hdf/+}*) had much fewer blood vessels in the tumor (A). A diagrammatic representation of how the host versican is modified and relocated to promote angiogenesis and tumor growth (B).

Reference

Keiichi Asano, Courtney M. Nelson, Sumeda Nandadasa, Noriko Aramaki-Hattori, Daniel J. Lindner, Tyler Alban, Junko Inagaki, Takashi Ohtsuki, Toshitaka Oohashi, Suneel S. Apte & Satoshi Hirohata. Stromal Versican Regulates Tumor Growth by Promoting Angiogenesis. *Scientific Reports*, volume 7;17225, 2017.

DOI: 10.1038/s41598-017-17613-6

<http://www.nature.com/articles/s41598-017-17613-6>

Correspondence to

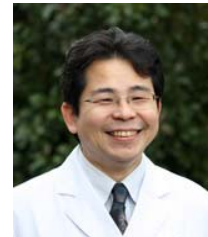
Professor Satoshi Hirohata, M.D., Ph.D.

Department of Medical Technology,

Graduate School of Health Sciences, Okayama University,

Shikata-cho 2-5-1, Okayama city, Okayama 700-8558, Japan

E-mail: hirohas@cc.okayama-u.ac.jp



Professor
Satoshi Hirohata

Further information

Okayama University

1-1-1 Tsushima-naka, Kita-ku, Okayama 700-8530, Japan

Public Relations and Information Strategy

E-mail: www-adm@adm.okayama-u.ac.jp

Website: http://www.okayama-u.ac.jp/index_e.html

Okayama Univ. e-Bulletin: <http://www.okayama-u.ac.jp/user/kouhou/ebulletin/>

About Okayama University (YouTube):

<https://www.youtube.com/watch?v=iDL1coqPRYI>

Okayama University Image Movie (YouTube):

<https://www.youtube.com/watch?v=KU3hOIXS5kk>



Okayama University Medical Research Updates (OU-MRU)

Vol.1 : [Innovative non-invasive 'liquid biopsy' method to capture circulating tumor cells from blood samples for genetic testing](#)

Vol.2 : [Ensuring a cool recovery from cardiac arrest](#)

Vol.3 : [Organ regeneration research leaps forward](#)

Vol.4 : [Cardiac mechanosensitive integrator](#)

Vol.5 : [Cell injections get to the heart of congenital defects](#)

Vol.6 : [Fourth key molecule identified in bone development](#)

Vol.7 : [Anticancer virus solution provides an alternative to surgery](#)

Vol.8 : [Light-responsive dye stimulates sight in genetically blind patients](#)

Vol.9 : [Diabetes drug helps towards immunity against cancer](#)

Vol.10 : [Enzyme-inhibitors treat drug-resistant epilepsy](#)

Vol.11 : [Compound-protein combination shows promise for arthritis treatment](#)

- Vol.12 : [Molecular features of the circadian clock system in fruit flies](#)
- Vol.13 : [Peptide directs artificial tissue growth](#)
- Vol.14 : [Simplified boron compound may treat brain tumours](#)
- Vol.15 : [Metamaterial absorbers for infrared inspection technologies](#)
- Vol.16 : [Epigenetics research traces how crickets restore lost limbs](#)
- Vol.17 : [Cell research shows pathway for suppressing hepatitis B virus](#)
- Vol.18 : [Therapeutic protein targets liver disease](#)
- Vol.19 : [Study links signalling protein to osteoarthritis](#)
- Vol.20 : [Lack of enzyme promotes fatty liver disease in thin patients](#)
- Vol.21 : [Combined gene transduction and light therapy targets gastric cancer](#)
- Vol.22 : [Medical supportive device for hemodialysis catheter puncture](#)
- Vol.23 : [Development of low cost oral inactivated vaccines for dysentery](#)
- Vol.24 : [Sticky molecules to tackle obesity and diabetes](#)
- Vol.25 : [Self-administered aroma foot massage may reduce symptoms of anxiety](#)
- Vol.26 : [Protein for preventing heart failure](#)
- Vol.27 : [Keeping cells in shape to fight sepsis](#)
- Vol.28 : [Viral-based therapy for bone cancer](#)
- Vol.29 : [Photoreactive compound allows protein synthesis control with light](#)
- Vol.30 : [Cancer stem cells' role in tumor growth revealed](#)
- Vol.31 : [Prevention of RNA virus replication](#)
- Vol.32 : [Enzyme target for slowing bladder cancer invasion](#)
- Vol.33 : [Attacking tumors from the inside](#)
- Vol.34 : [Novel mouse model for studying pancreatic cancer](#)
- Vol.35 : [Potential cause of Lafora disease revealed](#)
- Vol.36 : [Overloading of protein localization triggers cellular defects](#)
- Vol.37 : [Protein dosage compensation mechanism unravelled](#)
- Vol.38 : [Bioengineered tooth restoration in a large mammal](#)
- Vol.39 : [Successful test of retinal prosthesis implanted in rats](#)
- Vol.40 : [Antibodies prolong seizure latency in epileptic mice](#)
- Vol.41 : [Inorganic biomaterials for soft-tissue adhesion](#)
- Vol.42 : [Potential drug for treating chronic pain with few side effects](#)
- Vol.43 : [Potential origin of cancer-associated cells revealed](#)
- Vol.44 : [Protection from plant extracts](#)
- Vol.45 : [Link between biological-clock disturbance and brain dysfunction uncovered](#)
- Vol.46 : [New method for suppressing lung cancer oncogene](#)
- Vol.47 : [Candidate genes for eye misalignment identified](#)
- Vol.48 : [Nanotechnology-based approach to cancer virotherapy](#)
- Vol.49 : [Cell membrane as material for bone formation](#)
- Vol.50 : [Iron removal as a potential cancer therapy](#)
- Vol.51 : [Potential of 3D nanoenvironments for experimental cancer](#)



Okayama University supports the Sustainable Development Goals

◆About Okayama University

Okayama University is one of the largest comprehensive universities in Japan with roots going back to the Medical Training Place sponsored by the Lord of Okayama and established in 1870. Now with 1,300 faculty and 13,000 students, the University offers courses in specialties ranging from medicine and pharmacy to humanities and physical sciences.

Okayama University is located in the heart of Japan approximately 3 hours west of Tokyo by Shinkansen.

Website: http://www.okayama-u.ac.jp/index_e.html



Japan (日本)



Hirofumi Makino, M.D., Ph.D.
President, Okayama University



“Okayama University supports the Sustainable Development Goals”



2018 Summer School in Okayama, 01-14 July

SETOUCHI

Its natural environment and society