

# OKAYAMA UNIVERSITY ENVIRONMENTAL MANAGEMENT CENTER



OKAYAMA  
UNIVERSITY

GLOBAL GATE FOR LEARNING

## Purpose of Establishment

The Okayama University Environmental Management Center was founded to manage unified environmental preservation and safety operations, and to promote environmental management and labor safety at Okayama University.

The Environmental Management Center oversees environmental management, waste management, drainage water management, management and disposal of liquid waste from laboratories, workplace and laboratory safety management as well as associated research and education.

## History

September 26, 1975	Okayama University Special Wastewater Treatment Facility established
December 22, 1977	Okayama University Liquid Organic Waste Treatment Facility established
July 27, 1978	Okayama University Environmental Management Facility established
June 1, 1982	Renamed to Okayama University Environmental Management Center
April 1, 1999	Okayama University Environmental Management Center partially reorganized
April 1, 2004	Okayama University Health and Environmental Center established through the integration of the Environmental Management Center and Health Management Center
April 1, 2008	Okayama University Health and Environmental Center separated into the Environmental Management Center and Health Management Center
April 1, 2017	The Department of Environmental Management and Department of Chemical Management established within the Okayama University Environmental Management Center



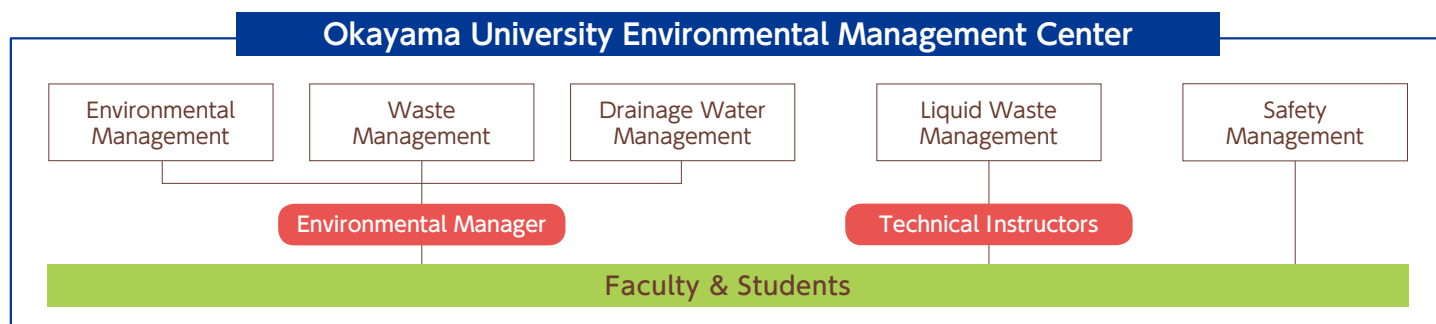
Layout of the Environmental Management Center and Related Facilities (Tsushima Area)  
▲ Final Inspection Tank ● Department Inspection Tank



ENVIRONMENTAL MANAGEMENT CENTER,  
OKAYAMA UNIVERSITY

# Center Operation

In accordance with Okayama University Environmental Policy, the Environmental Management Center works in cooperation with related organizations and technical instructors at the university to oversee global warming countermeasures, resource saving measures, waste management, drainage water management, liquid waste management, chemical substance management, and safety management.



## ▶ Environmental Management (See related page.)

### Environmental management operation

- Planning and submission of proposals for environmentally conscious activities.
- Planning, promotion, and enlightenment activities related to global warming countermeasures and green purchase.
- Okayama University Environmental Report planning and editing.

## ▶ Waste Management

### Ascertaining the state of waste treatment

- We aggregate data related to recycling and the disposal of waste generated at Okayama University.

### Classification and effective treatment of waste

- We conduct waste management enlightenment activities for staff.

### Operation of an information system for reusable articles

- We operate an information system for the registration of “unused articles” and “sought articles” on our website to promote efficient use and waste reduction.

## ▶ Chemical Substance Management

### Support for effective chemical substance management

- We examine the chemical substance management system for laboratories to provide guidance and consultation.
- We identify specified chemical substances (PRTR method) and take required administrative action.

### Operation of chemical management support system

- We oversee a web-based chemical substance management system that supports research laboratory management.

## ▶ Drainage Water Management

### Continuous monitoring and periodical analysis of drainage (Tsushima Area)

- We continuously monitor experimental effluents without pollutant in individual inspection tanks of each department and in final inspection tank before discharge to public sewerage.

- We conduct periodical analysis of experimental effluents without pollutant in individual inspection tanks of each department and in final inspection tank before discharge to public sewerage and domestic wastewater before discharge to public sewerage.

- We oversee the inspection and maintenance of water quality-related devices such as pH meters.

### Taking required administrative action

- We create reports specified by laws and regulations.

## ▶ Liquid Waste Management

### Collection of liquid organic and inorganic waste, special liquid waste, and photographic processing liquid waste

- We collect and examine harmful liquid waste generated at Okayama University, and outsource its treatment and disposal.

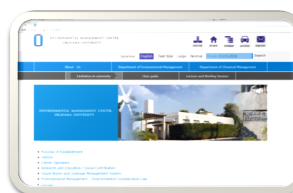
### Cultivation of technical instructors

- We hold seminars to cultivate technical instructors for liquid waste management.

## ▶ Safety Management

### Safety education

- We create environmental and safety management manuals for faculty and students. We also provide safety education for faculty during seminars for new hires.



<http://www.okayama-u.ac.jp/user/emc/index-en.html>



<http://www.okayama-u.ac.jp/user/emc/env/kankyou-houkousyo.html>



# Research and Education / Social Contribution

The Environmental Management Center promotes a wide range of environmental and safety research and education.

## ● Education for Students

We provide lectures on environmental and safety management to students as a part of education prior to the start of laboratory work. We also provide a general education class entitled "Developing a Sustainable Campus."

## ● Lecture and Briefing Session

We hold lecture and briefing session on environmental management.

## ● Extension Lecture and Seminar

We hold environmental seminars during Environment Month (June) as well as sustainability seminars and other programs for the general public.

## ● Research on Environmental Preservation

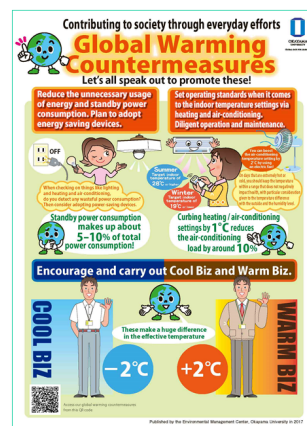
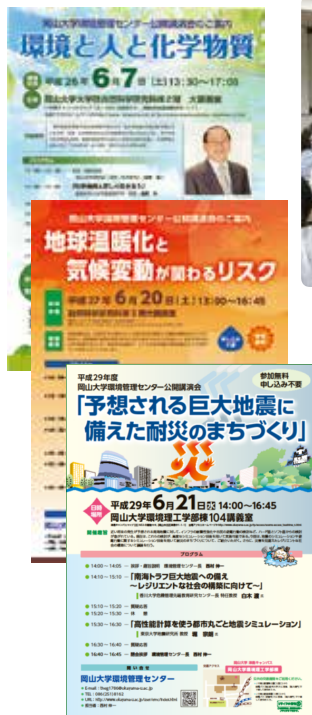
We promote technological development in areas such as water quality management, waste treatment, soil management, resource recovery, and environmental materials for environmental preservation.

## ● Publication of Center Newsletters

We publish *Environment Research & Control*, which includes environmental reports, explanations and business reports. We also publicize research and education activities undertaken by center staff.

## ● Support for Environmental Activities

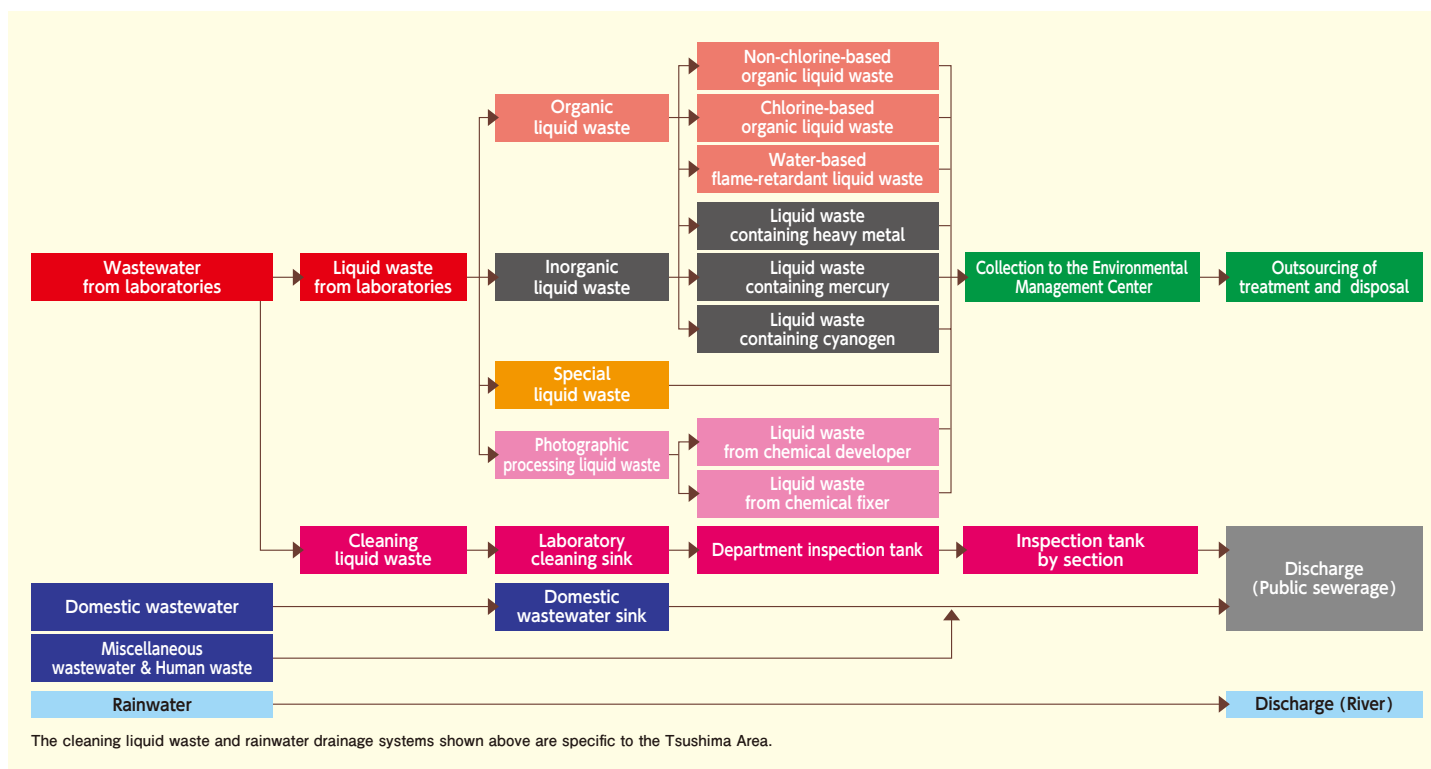
We provide guidance on research and environmental activities to faculty and students, and have representatives on related in or out university committees.



# Liquid Waste and Drainage Management System

Below is the flowchart for the Okayama University liquid waste and water management system.

Careful and proper handling of liquid waste and drainage by individual faculty and students is essential for the effective operation of this system.



The Okayama University Environmental Policy was established under the authority of the Dean to facilitate environmental management. The promotion of environmental management requires that all individuals associated with Okayama University understand this policy and act with consideration for the environment.

In addition, in accordance with the Act on the Promotion of Business Activities with Environmental Consideration by Specified Corporations, the Facilitation of Access to Environmental Information and Other Measures

(Environmental Consideration Law), Okayama University is obliged as a Specified Corporation to create and publicize annual environmental reports.

The Environmental Management Center makes proposals for global warming countermeasures, chemical substance management, resource saving measures, and environmental PR through the Environmental Management Committee, and plans and edits Okayama University Environmental Reports.

## Okayama University Environmental Policy

### Basic Principle

Based on the recognition that protecting and passing down the bounty of nature in the global environment to the next generation should be a fundamental pursuit, Okayama University strives to do its part in contributing to the realization of a sustainable recycling-oriented society and reducing environmental load through its research and education programs, and in a wide range of other activities throughout the university with the goal of creating a sustainable campus. In addition, we have also worked with the city and its communities to establish a new university town designed to serve as a base for international research in collaboration.

### Basic Policies

Okayama University leverages the characteristics of its 11 faculties and seven graduate schools, related three research laboratories, attached hospital and schools to promote the following activities :

1. Research and education related to the global and regional environments and biodiversity, the cultivation of human resources that exhibit a high degree of comprehension applicable to environmental areas both at home and abroad, and research that contributes to the preservation and improvement of the environment.
2. Extension courses and symposiums on the environment, collaboration with regional society, and contributions to the environment.
3. Compliance with laws, regulations, agreements, and voluntary standards regarding the environment.
4. Global environment preservation activities in business activities :
  - (1) Promotion of energy saving
  - (2) Measures against global warming
  - (3) Measures for resource saving
  - (4) Waste reduction, recycling, and the proper processing of hazardous waste
  - (5) Promotion of green purchasing
  - (6) Thorough management of chemical substances
5. The continual improvement of environmental preservation activities by faculty, students and everyone else at Okayama University.

April 1, 2017  
Hirofumi MAKINO  
President, Okayama University

- ◆ Click the URL shown below to see the Okayama University Environmental Policy, Environmental Objectives and Goals, and Environmental Reports.

URL : <http://www.okayama-u.ac.jp/tp/profile/consid-er.html>



University Logo

## OKAYAMA UNIVERSITY ENVIRONMENTAL MANAGEMENT CENTER

3-1-1 Tsushima-naka, Kita-ku, Okayama 700-8530 Japan  
Contact : Okayama University Environmental Management Center  
Tel: +81-86-251-7280 & +81-86-251-7279  
Fax: +81-86-251-7281

<http://www.okayama-u.ac.jp/user/emc>

Okayama University Environmental Management Center

Search

