

# ISCOVERY

Program for  
Global Learners  
at OKAYAMA University  
JAPAN



OKAYAMA  
UNIVERSITY

**A four-year bachelor's program in English**  
(The option to study in Japanese at faculties  
outside the program is also available.)

## Application Guide for 2022

International Admissions



**APPLICATION PERIOD 1:**

October 1, 2021 – October 29, 2021  
(April or October 2022 admission)

**APPLICATION PERIOD 2:**

December 1, 2021 – January 21, 2022  
(October 2022 admission only)

# CONTENTS

<b>About Okayama and Okayama University</b> .....	2
Why come to Okayama? .....	3
Three reasons to study at Okayama University .....	3
Discovery Program for Global Learners .....	4
Japanese language courses at Okayama University .....	7
Frequently asked questions .....	8
<b>Applying to the Discovery Program</b> .....	9
Selection process .....	9
Important dates .....	9
Number of seats available for 2022 Admission .....	9
Admission eligibility requirements .....	10
Application checklist .....	11
Interview guidelines .....	11
Application documents to submit by post .....	12
Application documents to submit online .....	14
Online application form .....	14
Personal statement .....	15
Important notes for applicants .....	16
University policy on the use of personal information .....	16
Applicants with disabilities .....	16
Disclosure of exam information .....	16
Accepting an offer of admission .....	17
Student visas .....	17
Makeup interview .....	18
Fees .....	19
Scholarships and financial aid .....	19
<b>Student Life</b> .....	20
Housing .....	20
Estimated living costs for 2022 .....	21
Campus facilities and services .....	22
Medical care and insurance .....	23
<b>Admissions Policy</b> .....	24

## Important Notice

All important information concerning the entrance exam (including announcements related to disasters or infectious diseases) is posted on our website.

<https://discovery.okayama-u.ac.jp/en/>

As a result of the COVID-19 pandemic, the selection method or schedule might be adjusted. In this case, an announcement will be made on the website.

Those who are infected by COVID-19 or are suspected of infection may petition for a makeup interview. Please see page 18 of the application guide for more details.

# About Okayama and Okayama University

population of

**720,000**



a national university  
established in

**1870**

**1 hour**

by train to  
Kyoto and Osaka

**276**

average sunny  
days per year

in the

**TOP 2%**

of research universities  
worldwide



# Why come to Okayama?

## Convenient location

- Bullet trains with direct lines to Kyoto, Osaka, and Tokyo from Okayama Station
- Direct flights to Tokyo, Seoul, Shanghai, and beyond from Okayama Airport

## Tradition and history

- Okayama castle
- Korakuen, one of Japan's three best traditional gardens
- Numerous temples, shrines, and museums

## Comfortable climate, safe environment

- Mild climate year-round, facing the Seto Inland Sea
- Affordable cost of living and low crime rate

## City life

- Affordable Japanese and international cuisine
- Shopping, theaters, and outlet malls
- Sports grounds hosting the Fagianos, Okayama's professional soccer team



# Three reasons to study at Okayama University

## High-quality, affordable education

- 10 faculties and 8 graduate schools
- 9 to 1 student-faculty ratio
- Tuition waivers and scholarships available to eligible students

## Top-ranking research university

- Established university with a history of 150 years
- Internationally recognized for research in medicine, science, pharmacology, agriculture, and more
- Committed to pursuing sustainability in line with the United Nations Sustainable Development Goals (SDGs)
- Numerous fieldwork and laboratory opportunities for undergraduates

## Friendly and welcoming

- English orientation and support for students from 61 different countries
- 131 sports and culture clubs: something for everyone!
- 357 partner institutions in 46 countries



Okayama University supports the Sustainable Development Goals

# 13,054 students

10,084 undergraduates  
2,970 graduate students  
774 international students  
(student population as of May 2021)

# SDGs Partnership Award

Honored with a special award in the first Japan SDGs awards (December 2017) for aligning our entire educational program with the SDGs

# Discovery Program for Global Learners

## Program overview

**88%**

of classes have less than 25 students

**30**

different nationalities

**11:9**

international : domestic admissions ratio

### ENGLISH and JAPANESE

The Discovery Program for Global Learners is a four-year undergraduate program that can be completed entirely in English. Alternatively, students with advanced Japanese proficiency have the option of taking courses in Japanese and even conducting their senior project in Japanese. Intensive Japanese language courses are also offered to help students adapt to life in Okayama.

### INTERDISCIPLINARY APPROACH

The program offers courses from a wide range of disciplines, including social sciences, humanities, and natural sciences. Its open curriculum allows students to develop a personalized study program that combines courses from different disciplines and fits their individual academic interests and future goals.





## Subjects taught in English

### Social Innovation and Entrepreneurship

The world we live in today faces diverse issues - poverty, unemployment, discrimination, environmental degradation, and many more. The Social Innovation and Entrepreneurship Cluster aims at working out sustainable and scalable solutions to persistent social issues.

#### Management

This module offers courses that introduce the tools and principles to improve and enhance management skills, expertise, and knowledge that facilitate career development.

#### Economics

This module provides students with a foundation in economics to prepare them to work for a business, government, or nonprofit organization. In addition to learning basic economic principles in microeconomics and macroeconomics, students explore poverty, inequality, and development from different perspectives.

#### Nonprofit Management and Social Entrepreneurship

This module provides students with opportunities to learn how to change society for the better as visionary leaders or social entrepreneurs. Students explore the social, political, and economic roles of nonprofits while learning professional and management skills through an interdisciplinary approach that utilizes hands-on group projects in collaboration with local nonprofits and practical step-by-step exercises.

### Cultural Diversity and Communities

Sociology, anthropology and political science offer us tools to understand beliefs and practices around the world, and question our own values. In this cluster, students learn how to examine mundane everyday matters such as work and family life, as well as extraordinary situations such as disasters and displacements, and analyze them from various vantage points, incorporating gender, sexuality, identity, social networks, and structural inequality.

#### Japan and Beyond

There are many cultural groups in Japan. What we often call “Japanese culture” is never singular or static. In this module, students learn how multiple cultures and shifting identities mingle in Japan and beyond.

#### Migration and Communities

Migration opens doors to new encounters, opportunities, and risks. In this module, students learn why migrants and refugees leave their homes, and how migration affects their lives, communities of origin, and host societies.

#### Environment and Health

In this module, students explore how beliefs about health and environment in different cultures are rooted in different ideas about “humans,” “personhood,” and “nature.”

#### Governance

Politics exists wherever people live together. Courses in this module explore how politics works in different communities, the reasons for these differences, and our own roles in politics.

## Transdisciplinary Sciences

The environmental problems we face today increasingly require scientists to cross disciplinary boundaries and think across scales from local to global, and even to cosmic space. Knowledge and skills gained in environmental chemistry, physical chemistry, and magnetism are all necessary for pursuing a sustainable future for our planet.

### Atmospheric and Astronomical Physical Chemistry/Magnetism

Many puzzles of the universe and many environmental problems can be tackled by understanding the processes of physical chemistry with molecular science. In particular, we use laser spectroscopy and quantum chemistry to study atmospheric molecules and interstellar molecules. Furthermore, the magnetic property of materials can be investigated with microwave spectroscopy, which may play a role in solving environmental problems.

### Energy, Environmental and Sustainable Chemistry

Energy, environmental and sustainable chemistry focuses on new materials, catalysis, and gas separation to tackle the challenges of renewable energy-generation and recycling, and develop sustainable methods that improve existing processes and make use of renewable resources. We investigate new materials for energy applications, developing novel processes for the production of sustainable materials, recovery of resources, and detoxification of pollutant chemical species in the environment.

## Subjects taught in English and in Japanese (advanced courses)

### Agricultural Science (English-Japanese hybrid program)

The agricultural science program offered by the Discovery Program for Global Learners (GDP) benefits from the vast educational and research resources available at the Faculty of Agriculture. For the first two years of this program, GDP students study basic science and agricultural science courses in English while studying Japanese intensively. From the second year, students start taking agricultural science courses taught in Japanese at the Faculty of Agriculture with the aid of a personalized academic Japanese training program. Students may also do independent studies with faculty members to supplement their studies. From the third year on, GDP students study together with Faculty of Agriculture students. GDP students interested in this program with minimal or no Japanese proficiency at the time of admission are encouraged to study Japanese on their own before enrollment. Students with higher Japanese proficiency may take higher-level Japanese courses to further improve their language skills or select elective courses instead of Japanese.

#### Study Model:

First Year	Second Year	Third Year	Fourth Year
Introductory Science Courses (in English)	Agricultural Science Courses (in English)	Advanced Laboratory in Agricultural Science	Senior Project Research and Seminars
GDP Common Courses			
Japanese Language Courses	Academic Japanese Training	Agricultural Science Courses (in Japanese)	Common

## Subjects taught in Japanese

# Faculties outside the Discovery Program open to students with advanced Japanese proficiency

Students with advanced Japanese proficiency (level N2 Japanese Language Proficiency Test (JLPT) or above at the time of enrollment) may be able to study in other faculties at Okayama University if they have the prerequisite level of knowledge in their intended field study.

- Faculty of Letters
- Faculty of Education
- Faculty of Law
- Faculty of Economics
- Faculty of Science
- Medical School (Faculty of Health Sciences only)
- Faculty of Pharmaceutical Sciences (Department of Pharmaceutical Technology only)
- Faculty of Engineering
- Faculty of Agriculture

For more details on the program curriculum, visit our website at [https://discovery.okayama-u.ac.jp/en/about\\_discovery/](https://discovery.okayama-u.ac.jp/en/about_discovery/).

## Japanese language courses at Okayama University

The Department of Japanese Language at Okayama University offers a variety of Japanese courses to help students develop their language proficiency skills. Courses range from level 1 (beginner) to level 7 (advanced). Students take a placement test during orientation to determine the most appropriate level and then select Japanese classes that suit their goals (e.g., integrated classes, skill-based classes, topic-based classes). Academic Japanese courses are also available to Discovery students who take coursework in Japanese.

**Example: Japanese courses offered in term 3 and term 4, 2021 (subject to change)**

Level		Integrated Classes (classes per week)	Skill-based and Topic-based Classes (classes per week)						
Elementary	1	Japanese 1 (8)							
	2	Japanese 2 (8)	Reading and Writing 1 (4)						
Intermediate	3	Japanese 3 (8)	Reading and Writing 2 (4)					Japanese through Films 1 (2)	Intermediate Grammar 1 (2)
	4	Japanese 4 (8)	Intermediate Kanji and Vocabulary (2)	Japanese through News And Magazine Articles (2)	Extensive Reading 1 (2)				
	5	Japanese 5 (8)							
Advanced	6	Japanese 6 (8)							
	7		Applied Japanese (Reading B)(2)	Study of Okayama (2)			Japanese through Films 2 (2)	Intermediate Grammar 2 (2)	
			Applied Japanese (Listening B)(2)		Media Literacy (2)	Extensive Reading 2 (2)			
			Applied Japanese (Writing A)(2)						
	Applied Japanese (Speaking A)(2)								



# Frequently asked questions

## What kind of degree will I earn?

Students who complete the four-year program earn a Bachelor of Arts and Sciences. The diploma states that the recipient is a graduate of the Discovery Program, regardless of the department or faculty under which the student completes their senior project.

## Who can apply?

The program welcomes applicants of all nationalities from both Japan and abroad. Current Discovery students include international students from around the globe, returnees to Japan, and graduates of high schools in Japan. The program accepts about 30 students through international admission, and 30 through domestic admission each year.

## Do I need to know Japanese?

Japanese language proficiency is not a requirement for October admissions, except for those who wish to take courses in Japanese from faculties outside the Discovery Program. However, Japanese proficiency equivalent to JLPT level N1 is required for April admissions. For more details on eligibility requirements, see page 10.

## English is not my first language. Can I take classes to improve my English?

Yes, students who wish to improve their English proficiency may enroll in English classes offered through the Discovery Program or the Center for Liberal Arts and Language Education.

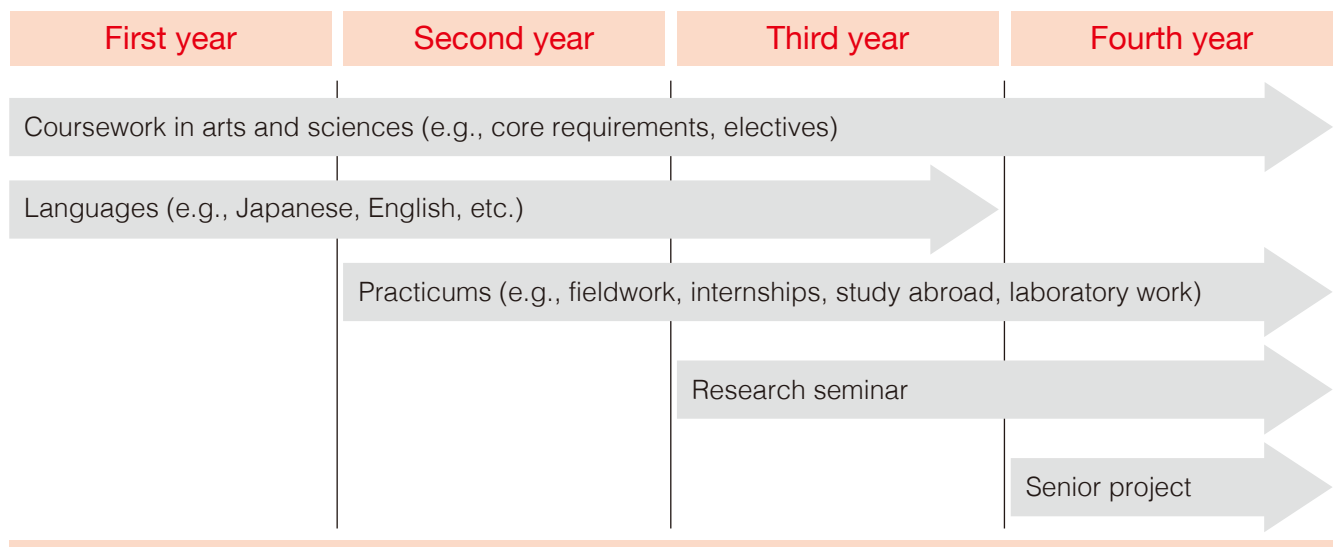
## What is an interdisciplinary approach?

An interdisciplinary approach means students can cross traditional department boundaries by creating a personalized curriculum that focuses on their interests and career goals. Students can combine courses from a range of disciplines.

## What can I study?

All students work closely with an academic advisor to develop an individual study program leading to a senior project on a topic of their own choice (see page 5-7). Students must demonstrate both academic knowledge and strong critical thinking skills by gathering, analyzing, and interpreting information, and presenting their findings to their faculty and peers. A full list of courses offered by the Discovery Program is available on our website.

Your four-year schedule might look like this:



## What kind of job can I find after graduation?

The program emphasizes practical, hands-on education featuring fieldwork, internships, study abroad, and laboratory work. Students will learn to deal with complex issues from a variety of perspectives, and present creative, concrete solutions to real-life problems. With advanced language and critical-thinking skills and cross-cultural experiences, Discovery graduates will be prepared for careers in a wide range of fields.

# Applying to the Discovery Program

## Selection process

### Submission of application documents:

All applications and accompanying documents must reach our office by the deadline. Late submissions or incomplete applications will not be considered.



### First screening:

The Selection Committee reviews application documents and posts results of the first screening on our website. Successful applicants move on to the final screening.



### Final screening (interviews):

Those who pass the first screening have interviews online. See page 11 for interview guidelines.



### Successful applicants announced:

Results of final screening and pass rates posted online. Accepted applicants are notified individually by post, and are provided with detailed information on admission procedures.

## Important dates

	Application Period 1 April or October 2022 Admission	Application Period 2 October 2022 Admission only
Application period	October 1, 2021 – October 29, 2021	December 1, 2021 – January 21, 2022
Results of first screening announced	November 19, 2021 (13:00 JST*)	February 21, 2022 (13:00 JST*)
Final screening (interviews)**	December 4, 2021	March 12, 2022
Results of final screening announced	December 27, 2021 (10:00 JST*)	March 21, 2022 (13:00 JST*)
Deadline to complete admission procedures***	January 21, 2022	May 9, 2022

\*JST: Japan Standard Time

\*\*Applicants should check interview dates, and confirm they will be available before applying.

\*\*\*Students who do not pass the final screening may be waitlisted and offered admission after the deadline to complete admission procedures. If openings are still available, an additional application period may be announced on the website around the end of May.

## Number of seats available for 2022 Admission

	April 2022 Admission	October 2022 Admission
Application Period 1	3 students	10 students
Application Period 2	not applicable	20 students

# Admission eligibility requirements

1	Students must satisfy ONE of the following requirements:	<p>a) Complete a 12-year course of education as designated by the Ministry of Education in Japan or abroad prior to enrollment (students who have skipped grades are also eligible).</p> <p>b) Complete 11 years of education abroad, plus a Japanese university pre-session course designated by MEXT (Ministry of Education, Culture, Sports, Science and Technology of Japan).</p> <p>c) Earn certification or test results equivalent to a 12-year course of education outside of Japan, and be 18 years of age or older prior to enrollment.</p> <p>d) Complete 11 years of education as designated by the Ministry of Education in the Republic of the Union of Myanmar and earn a high school completion certificate.</p> <p>e) Earn an International Baccalaureate Diploma (IB Full Diploma) from the International Baccalaureate Organization.</p> <p>f) Earn an Abitur from the Federal Republic of Germany.</p> <p>g) Earn a Baccalaureate from the French Republic.</p> <p>h) Earn a GCE Advanced Level (GCEA) required for university matriculation in Great Britain and Northern Ireland.</p> <p>i) Complete 12 years of education in an internationally-certified program (WASC, CIS, ACSI).</p>
2	Official English proficiency test scores <b>REQUIRED</b> for applicants who have not received their last five years of formal education in English.	Scores must be from exams taken after September, 2019. For more details, see page 13.
3	Advanced Japanese language proficiency <b>(for April admission ONLY)</b>	<ul style="list-style-type: none"> <li>• April applicants must pass JLPT level 1 (N1) or demonstrate similar ability in order to understand instructions and participate in school activities such as orientation in Japanese.</li> <li>• Japanese language ability is NOT required for October admission.</li> </ul>
4	Commitment to Okayama University	Applicants must have a strong desire to study in the Discovery Program for Global Learners at Okayama University and should be prepared to enroll in the program if they are accepted.
5	Legal residence status in Japan (for applicants who do not have a Japanese passport or legal long-term residency)	Successful applicants must have a valid passport and obtain a suitable visa to study in Japan legally prior to enrollment. For information on student visas, see page 17.

For questions on admission eligibility requirements, please contact the Discovery Office at [admission\\_discovery@adm.okayama-u.ac.jp](mailto:admission_discovery@adm.okayama-u.ac.jp).

# Application checklist

Details for each item are provided on pages 12-15.

To be submitted online:      To be sent by post:

- Application form
- Personal statement
- ID photo
- Application fee

- Official transcripts
- School profile
- Certificate of graduation or statement certifying expected graduation date
- Letter of academic evaluation
- Letter of recommendation
- Standardized test results (where applicable)
- Official English proficiency test scores (where applicable)
- Proof of Japanese proficiency (where applicable)

## Interview guidelines

- The Discovery Program conducts interviews in English in lieu of a written entrance examination.
- Interviews will be conducted online via Skype or a similar application.
- Interviews will take approximately 20-30 minutes.
- Applicants may be asked questions about their interest in their proposed area(s) of study, and coursework taken to date to prepare for college-level study in these area(s).
- Students who wish to pursue their studies in other faculties at Okayama University will be asked questions in Japanese about their intended field of study.
- The Admissions staff will conduct pre-interview checks via Skype a few days before the Skype interview to troubleshoot connection problems. Applicants will be informed of the date and time of their pre-interview check and interview time via email.
- Applicants who do not complete the pre-interview check will not be allowed to participate in the interview.
- Applicants are expected to check their email regularly for updates throughout the application process, but particularly prior to the interview process. Failure to respond to emails in a timely manner may result in an applicant being dropped from the selection process.

### Requesting a different interview time

- The admissions staff makes every effort to ensure that candidates are assigned a reasonable interview times during daytime or early evening hours in their local time zone.
- We recognize that assigned times may sometimes require applicants to reschedule their regular daily activities. However, **requests for time changes will be considered only in extreme cases** such as illness, unavoidable emergencies, or other conflicts that would cause unreasonable inconvenience to the applicant.
- The Selection Committee will make the final determination on such requests, and may require documentation before granting approval.
- Applicants who wish to request a change in their pre-interview check or interview time should contact the Discovery Office at [admission\\_discovery@adm.okayama-u.ac.jp](mailto:admission_discovery@adm.okayama-u.ac.jp).

# Application documents to submit by post

All application documents are available online at

[https://discovery.okayama-u.ac.jp/en/prospective\\_students/admission/](https://discovery.okayama-u.ac.jp/en/prospective_students/admission/)

1	<p><b>Official transcripts (REQUIRED)</b></p>	<ul style="list-style-type: none"> <li>• If you have already graduated from secondary school, submit full transcripts of all courses taken in secondary school (most recent 2-3 years).</li> <li>• If you are still in secondary school, submit transcripts of all classes completed to date (most recent 2-3 years).</li> <li>• If you have attended more than one secondary school, submit transcripts from each school (most recent 2-3 years).</li> <li>• If you are currently in a tertiary or post-secondary educational institute, submit transcripts of all classes completed to date, as well as transcripts of courses taken in secondary school.</li> <li>• Transcripts may be photocopies, but they must be enclosed in a sealed envelope and signed across the flap by a school official.</li> <li>• Transcripts in languages other than English or Japanese must be accompanied by an English or Japanese translation.</li> </ul>
2	<p><b>School profile (REQUIRED)</b> <i>Use online form.</i></p>	<ul style="list-style-type: none"> <li>• Complete the online form, enclose in a sealed envelope and ensure that it is signed across the flap by a school official.</li> </ul>
3	<p><b>Copy of graduation certificate or statement certifying expected graduation date (REQUIRED)</b> <i>Use online form for statement certifying expected graduation date.</i></p>	<ul style="list-style-type: none"> <li>• Applicants who have already graduated from secondary school should submit a photocopy of their graduation certificate.</li> <li>• Applicants who have not yet graduated will be required to submit a copy of their certificate after arriving on campus.</li> <li>• Certificates in languages other than English or Japanese should be accompanied by an English or Japanese translation.</li> </ul>
4	<p><b>Letter of academic evaluation (REQUIRED)</b> <i>Use online form.</i></p>	<ul style="list-style-type: none"> <li>• The letter of academic evaluation must be written by someone at your secondary school (even if you are currently attending a tertiary institution) such as a school principal, counselor, or teacher, even if the evaluator does not know or remember you well.</li> <li>• The evaluator should confirm your years of attendance and graduation date, and provide information about your academic performance while at the school.</li> <li>• The letter of academic evaluation must be in English or Japanese.</li> </ul>
5	<p><b>Letter of recommendation (REQUIRED)</b> <i>Use online form.</i></p>	<ul style="list-style-type: none"> <li>• The letter of recommendation should be written by someone who knows you well and has interacted directly with you in a supervisory position at school, work, or through extracurricular activities - a teacher, manager, boss, coach, or advisor.</li> <li>• In addition to commenting on your ability to work independently, think creatively, communicate effectively, and maintain motivation, the recommender should also provide information about your personal interests, abilities, and accomplishments.</li> <li>• The letter of recommendation must be in English or Japanese.</li> </ul>

6	Standardized test results (OPTIONAL)	<ul style="list-style-type: none"> <li>• Applicants who have taken standardized exams typically used for university admission in their country, such as the SAT or ACT, may submit photocopies of official results.</li> <li>• Applicants who reside in countries where the Examination for Japanese University Admission for International Students (EJU) by the Japan Student Services Organization (JASSO) is offered may submit photocopies of official scores.</li> <li>• Applicants who have an International Baccalaureate (IB) Diploma may submit a photocopy of their diploma and an official certificate of their IB exam results, issued by the International Baccalaureate Office.</li> <li>• Applicants who have not yet received their IB Diploma may send official transcripts of IB predicted scores, endorsed by the principal or a guidance counselor at their school. Please note that once applicants are admitted, they will be asked to submit a photocopy of their IB Diploma and an official certificate of their IB exam results.</li> </ul>
7	Official English proficiency test scores* <b>REQUIRED</b> for applicants who have not received their last five years of formal education in English.	<ul style="list-style-type: none"> <li>• Scores must be from exams taken after September, 2019. Unofficial score reports or photocopies are acceptable for the application process. You may have to submit the original certificates upon request.</li> <li>• The Discovery Program does not have minimum requirement scores. English ability is evaluated through standardized tests scores, writing samples, and interviews etc.</li> <li>• Students must submit scores from one or more of the following tests: Cambridge English/ The EIKEN Test in Practical English Proficiency (実用英語技能検定)/ GTEC Advanced or GTEC Basic or GTEC Core or GTEC CBT/ IELTS/ TEAP/ TEAP CBT/ TOEFL iBT/ TOEIC Listening &amp; Reading Test and TOEIC Speaking &amp; Writing Tests.</li> </ul>
8	Proof of Japanese proficiency* <b>(for April admission ONLY)</b>	<ul style="list-style-type: none"> <li>• Applicants for April Admission must submit photocopies of the certificate of Japanese language proficiency (e.g., JLPT score report) or documents demonstrating similar ability (e.g., Japanese teacher's language assessment report).</li> <li>• Applicants for October Admission who have taken the JLPT are encouraged to submit their scores as optional material. Usually, JLPT N2 level proficiency or above is required to take coursework in Japanese.</li> </ul>

\*If applicants are not able to take the English proficiency test or the JLPT as a result of unforeseeable circumstances related to the COVID-19 pandemic or for any other reason, please contact the Discovery Office by email at least one month prior to the application period start date.

Applicants outside of Japan should send documents via registered airmail such as Speed Post, DHL, FedEx, OCS, or EMS. Applicants in Japan should send documents via kakitome (書留).

For queries on information not included in this guide, please contact the Discovery Office:

Discovery Program for Global Learners, Okayama University  
2-1-1 Tsushima-naka, Kita-ku, Okayama 700-8530 JAPAN  
Tel.+81-86-251-7912, 7915 Fax.+81-86-251-7201  
Email: [admission\\_discovery@adm.okayama-u.ac.jp](mailto:admission_discovery@adm.okayama-u.ac.jp)



# Application documents to submit online

Go to [https://discovery.okayama-u.ac.jp/en/prospective\\_students/admission/](https://discovery.okayama-u.ac.jp/en/prospective_students/admission/)

1	Okayama University application form (REQUIRED)	<ul style="list-style-type: none"><li>• The application form MUST be completed online in one session <b>otherwise information entered will not be saved.</b></li><li>• Save a copy of the completed form for your records.</li><li>• For details on the information required for the online application form, see below.</li></ul>
2	Personal statement (REQUIRED)	<ul style="list-style-type: none"><li>• Download the file (Microsoft Word or PDF).</li><li>• Complete the personal statement in English.</li><li>• For more information on the personal statement, see page 15.</li></ul>
3	ID photo (REQUIRED)	<ul style="list-style-type: none"><li>• Submit a 4 cm long x 3 cm wide color photo taken within the last 3 months, showing a front view without headgear (except for religious purposes) or sunglasses, above chest level, with a solid-color background.</li><li>• The photo will be used to identify the applicant at the interview.</li></ul>
4	Application fee (REQUIRED)	<ul style="list-style-type: none"><li>• Submit the application fee of ¥17,000 via credit card using the online application system.</li><li>• If payment by credit card is not possible, please contact the Discovery Office at <a href="mailto:admission_discovery@adm.okayama-u.ac.jp">admission_discovery@adm.okayama-u.ac.jp</a> for other payment options.</li><li>• The application fee cannot be waived or returned.</li><li>• The application fee cannot be refunded unless the application is incomplete, not accepted, or the fee is resubmitted in error.</li></ul>

## Online application form

This form must be completed in one session. Collect all necessary information before starting:

- Name, current address, and phone number
- Emergency contact information
- Skype ID (Please create a free Skype account if you do not have one.)
- Intended area(s) of study within the Discovery Program. See our website for more details: [https://discovery.okayama-u.ac.jp/en/about\\_discovery/](https://discovery.okayama-u.ac.jp/en/about_discovery/)
- Full educational background from primary through secondary school, including school names, locations, and dates attended
- English language proficiency tests scores (where applicable), including date and location of test, scores, and registration number
- List of other standardized tests taken (OPTIONAL)
- Names of other universities you are applying to (OPTIONAL: your response will not affect your application)

When you are ready to complete the online form, go to <https://e-apply.jp/n/okayama-gdp>.

# Personal statement

The personal statement is a valuable opportunity for you to convince the Selection Committee that you are a great candidate for the Discovery Program. Take the time to think carefully, and revise as needed before submitting your statement. Read through our website and other materials carefully in order to improve your understanding of the Discovery Program and write a successful personal statement. In particular, read through the curriculum section on our website and explain concretely how our curriculum will help you meet your goals. We will evaluate your statement for content, quality, and clarity of writing.

Complete all sections in English. Respond to all questions. Part A and Part B should be written in essay format. Although you may consult teachers, counselors, and friends, all final writing must be your own words. If we detect plagiarism, including material copied from websites, your application will not be considered any further. If you advance to the interview stage, you may be asked to answer questions or elaborate on your statement.

## Part A: Statement of Interest

Write a short essay of 450 to 500 words answering the following questions:

- What is/are your current interest(s) and goal(s)?
- What life experiences led you to your current interest(s) and goal(s)?
- What is your proposed course of study (e.g., “Track”/“Cluster” of the Discovery Program) ?
- How does your proposed course of study relate to your interest(s) and goal(s)?

## Part B: Life Lesson (if you have selected “Social Science & Humanities” as your first choice in “10. Desired Area(s) of Study” in online application form)

Write a short essay of 450 to 500 words answering the following questions:

- What has been the biggest challenge in your life?
- How have you overcome/are you trying to overcome it?
- What life lesson have you learnt from these experiences, and how/what can you contribute to others through this lesson?

## Part B: Topics of Interest (if you have selected “Science & Applied Science” as your first choice in “10. Desired Area(s) of Study” in online application form)

Explain any two of the following topics in one A4 sheet or within the specified frame:

- The possible results when water and ice of the same mass are mixed. Consider the specific heat of water  $4.2 \text{ J/(g}\cdot\text{K)}$ , the specific heat of ice  $2.1 \text{ J/(g}\cdot\text{K)}$ , and the heat of fusion of ice  $330 \text{ J/g}$ .
- Why do artificial satellites not fall to earth?
- The relationship between carbon dioxide emissions and global warming.
- The color of light that is generated when a substance burns or becomes extremely hot.
- The process by which proteins are synthesized from DNA.

Note: Set and specify the detailed conditions necessary to explain the problem. Also, explain other phenomena that occur by the same principle.

## Part C: Extracurricular Activities

List up to five extracurricular activities in descending chronological order with the most recent one first.

Extracurricular activities may be events, committees, clubs, sports, conventions, communities, internships, jobs, study abroad, CAS (Creativity, Action, Service) activities, or volunteer work you have been involved in. Mention your assigned responsibilities and/or leadership roles. Mention any awards, qualifications, or certificates you may have earned.

## Important notes for applicants

- Applications must arrive at our office by 17:00 (JST) on the last day of the application period. Incomplete or late applications will not be considered. It is the applicant's responsibility to ensure that all required documents reach the Discovery Office by the deadline.
- Application documents will not be returned for any reasons.
- Applications may be rejected at any time, including during or after admission or enrollment, if it is determined that the applicant has made a false statement on any part of the application.
- If a document with a former name is submitted, please attach a document stating both your former and current names, and the date of the name change.
- Applicants may reapply. However, please update and revise the application documents as necessary. Please note that all documents must be resubmitted, and new application fees will apply.

## University policy on the use of personal information

Personal information provided in the application documents will be used only for the selection process, university administrative procedures, or as data for the purpose of evaluating and improving the university selection process and educational system. When personal information is used in a publication, it must be presented in such a manner that individuals cannot be identified. In addition to the selection process, personal information may be used for the following purposes:

- Information required by the University Students Affairs System, including the names, birth dates, and gender of successful applicants.
- Assessment results required to determine the academic qualifications of successful applicants who apply for admission fee exemption or postponement or tuition waivers.
- Information required by the University Management System to process university tuition fees and tuition waivers, including the names, birth date, and gender of successful applicants.

## Applicants with disabilities

Applicants with disabilities should submit documents explaining their individual circumstances by the deadlines below so that the university can make appropriate arrangements regarding accommodation for coursework, etc.

Deadline	Applicants for Application Period 1: September 10, 2021 Applicants for Application Period 2: November 12, 2021
Procedures	Complete the online Preliminary Consultation Form and submit it along with a doctor's note and a copy of your disability certificate (if issued). Download: <a href="https://discovery.okayama-u.ac.jp/en/prospective_students/admission/">https://discovery.okayama-u.ac.jp/en/prospective_students/admission/</a>
Submission	Email: <a href="mailto:admission_discovery@adm.okayama-u.ac.jp">admission_discovery@adm.okayama-u.ac.jp</a>

## Disclosure of exam information

Entrance exam information will be posted online between May 10 and May 31, 2022. If you would like access to the information, please contact the Discovery Office.

# Accepting an offer of admission

A detailed admissions guide will be sent to successful applicants along with the announcement of application results.

Students who wish to accept their offer of admission must submit the following documents by post, ensuring they arrive by the deadlines listed below.

- Receipt for payment of admission fee (see page 19)
  - \*If the admission fee is revised prior to admission, the new fee will apply.
- Photocopy of IB Diploma and official certificate of IB exam results (where applicable)
- Other documents as designated or requested by the university

## Deadlines for receipt of all documents

Application Period 1	January 21, 2022	Application Period 2	May 9, 2022
----------------------	------------------	----------------------	-------------

- Please note that accepting an offer of admission requires paying the admission fee AND submitting all documents stated above by the relevant deadline.
- If an applicant fails to complete all admission procedures by the deadline, he or she will be considered to have declined the offer of admission.
- In rare cases, admission fee exemption or postponement may be granted. Details are provided in the admissions guide sent to successful applicants.
- Applicants who complete the admissions process but wish to decline admission later must first contact the Discovery Office by email, and then submit a letter of request to decline admission to the President of Okayama University by post. The letter must reach our office by March 31, 2022 for April admission, and by September 30, 2022 for October admission. The letter must include the following information:
  - application number
  - name of the program for which the applicant was accepted
  - date the letter was written
  - reason for declining admission
  - applicant's signature

\*An applicant will be permitted to decline admission only after his/her request to decline is approved.

## Student visas

All international students must have a student visa to study in Japan. Students must have a valid passport to begin the visa process.

The university will contact students approximately two to three months prior to the start of their first term to begin the application process.

\*Students who have a Japanese passport do not need to apply for a student visa.

\*The visa application schedule and travel restrictions are subject to change based on the COVID-19 situation in Japan and students' home countries.

# Makeup interview

Given the current situation related to the COVID-19 pandemic, which has affected multiple people in various ways, we will be offering makeup interviews this year during our final screening process. This applies only to those who are infected by COVID-19 or those who are suspected of infection.

## (A) Who is eligible to apply for a makeup interview?

If applicants are unable to participate in the interview (final screening part of the selection process) on the scheduled date for one of the reasons listed below, they will be given a chance to have a makeup interview after sending a request together with a medical certificate during the period specified under (B).

- ① A person who has contracted COVID-19 and still has not fully recovered by the day of their scheduled interview (in this case, the applicant must submit a medical certificate)
- ② A person who has been in close contact with someone infected by COVID-19 and is currently waiting for the results of their COVID test (in this case, the applicant must submit a medical certificate)

## (B) How to request a makeup interview

To apply for a makeup interview, applicants should send their request to the email address indicated below by 17:00 (Japan Standard Time) on the date of the originally scheduled interview. They should also send a medical certificate, which specifies that they are infected, or they are suspected of infection, as well as the estimated period of treatment. We will notify applicants of the result of their request in due course. Please note that if a request is sent over a weekend or on a public holiday, our response might be delayed.

Discovery Program for Global Learners Office

admission\_discovery@adm.okayama-u.ac.jp

Please note that we cannot grant applicants a makeup interview if a request is sent after the date and time specified above. If applicants are granted permission to do a makeup interview, their originally scheduled interview will automatically be canceled.

## (C) The dates for makeup interviews

The makeup interview will be held on the dates specified below:

Application Period 1

December 18, 2021

Application Period 2

March 19, 2022

Please note that no other makeup interviews will be offered. Further details regarding the makeup interview will be provided once a request has been approved.

In the unlikely event that it becomes necessary to terminate an interview that is already in progress, a makeup interview will be scheduled. However, please note that the makeup interview will not re-examine any questions/topics that were sufficiently covered in the original interview.

The interview/makeup interview contributes to the final application result.



# Fees

## Admission Fee

- There is a one-time fee of **¥282,000 (2022 estimate)** to be paid shortly after the offer of admission is made.
- The university does not offer scholarships to cover the admission fee.
- Students who have trouble meeting the deadline due to financial difficulty may apply for a postponement. If granted a postponement, the student is still responsible to cover the admission fee after arriving on campus.
- If the admission fee is revised prior to admission, the new fee will apply.

## Tuition

- The annual tuition fee of **¥535,800 (2022 estimate)** is paid in two installments of ¥267,900 (2022 estimate).
- The first tuition payment is not due until after arrival on campus.
- If the tuition fee is revised prior to admission or while the student is enrolled, the new fee will apply.

For more information about fees, visit the website below:

[https://www.okayama-u.ac.jp/eng/international\\_admissions/Tuition.html](https://www.okayama-u.ac.jp/eng/international_admissions/Tuition.html)

It is important that new students arrive on campus prepared to cover all tuition fees and living expenses. Students are highly encouraged to apply for financial aid from government or private funding organizations.

# Scholarships and financial aid

## Discovery Scholarships

- **Four full-tuition scholarships** will be awarded to outstanding applicants accepted through international admissions for April 2022/October 2022. Scholarship recipients will be announced in conjunction with the announcement of application results.
- Applicants who apply via international admissions **during the first application period will have priority**. If scholarships are not awarded during the first period, applicants who apply during the second period will be considered.
- The scholarship may be renewed for up to four years provided the recipient maintains excellent academic standing.
- Scholarship recipients must be non-Japanese citizens or Japanese citizens with dual nationality, and may not be receiving full scholarships for undergraduate studies in Japan from other government or private organizations.

## Partial or Full Exemption of Admission Fees/ Tuition Fees (Students with Japanese citizenship or Japanese permanent residency)

- In accordance with new laws regarding financial aid at tertiary institutions, students with Japanese citizenship or permanent residency enrolling in the Discovery Program will be eligible to apply for financial aid (partial or full exemption of admission fees and tuition fees).
- For further details, please refer to the following websites:

MEXT <http://www.mext.go.jp/kyufu/index.htm>

JASSO <https://www.jasso.go.jp/shogakukin/kyufu/index.html>

Okayama University <https://www.okayama-u.ac.jp/tp/student/syugakushien.html>

## JASSO Scholarships

- JASSO (Japan Student Services Organization) also offers scholarships for international students who are residing outside of Japan at the time of admission to a Japanese university.
- Okayama University applies for this scholarship on behalf of eligible students. Successful applicants receive a **monthly stipend of ¥48,000 for the first twelve months after arrival for April admission, and for the first six months after arrival for October admission**.
- Most applications for eligible international students in 2020 and 2021 were successful.

## Other Scholarships for International Students

- Other scholarships and financial aid schemes which international students may apply for are listed on the website: [http://www.okayama-u.ac.jp/eng/current\\_students/Scholarship.html](http://www.okayama-u.ac.jp/eng/current_students/Scholarship.html)

## Scholarships for Japanese Students

- Scholarships and financial aid schemes which Japanese students may apply for are listed on the website (in Japanese): [http://www.okayama-u.ac.jp/tp/student/seikatu\\_a2.html](http://www.okayama-u.ac.jp/tp/student/seikatu_a2.html)



# Student Life

## Housing

### On-campus housing

#### International Student Shared House

International students residing outside of Japan at the time of application to the Discovery Program are granted housing priority for the International Shared House. If space is not available, some students may be housed in other dormitories on campus.

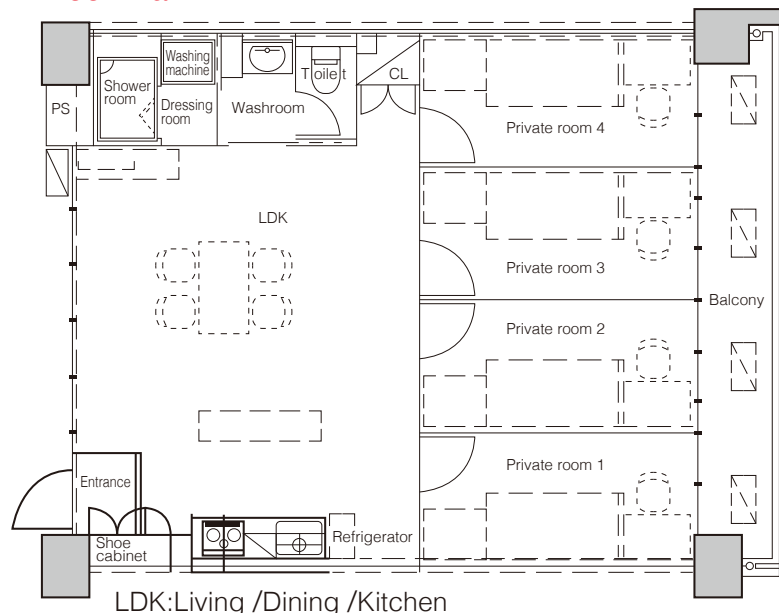
Eligibility	Number of units	Area	Floor
Single international students	30 units (four students per unit)	Common space: 29.6m <sup>2</sup> Private room: 7.9m <sup>2</sup>	1st~5th

- Each unit includes four furnished single-occupancy private rooms and a shared common space. Four students of the same gender share each unit.
- Rent: ¥23,000/month (subject to change)
  - \*Utilities: Monthly fixed charge ¥5,200 regardless of usage (subject to change).
  - \*includes internet service charges.
  - \*on-campus housing does not offer meals.
- A non-refundable one-time deposit of ¥30,000 (subject to change) will apply to all new residents.
- Length of stay: 5 months (minimum) to 6 months (maximum) (subject to change).
- Furnishings:
  - shared common space: shoe cabinet, curtains, heater/air-conditioner unit, shower room, washroom, toilet, kitchen facilities, refrigerator, microwave, kettle, dining table with four chairs, washing machine, vacuum cleaner, washing lines (on balcony), Wi-Fi, and flashlight
  - private rooms: desk, chair, bookshelf, closet, single bed, curtains, heater/air-conditioner unit, and internet access points (both wired and Wi-Fi)
  - \*Bed linen and blankets can be purchased prior to moving in.

For more information, visit the website at

[https://www.okayama-u.ac.jp/eng/current\\_students/Dormitory\\_for\\_International\\_Students.html](https://www.okayama-u.ac.jp/eng/current_students/Dormitory_for_International_Students.html)

#### Floor Plan



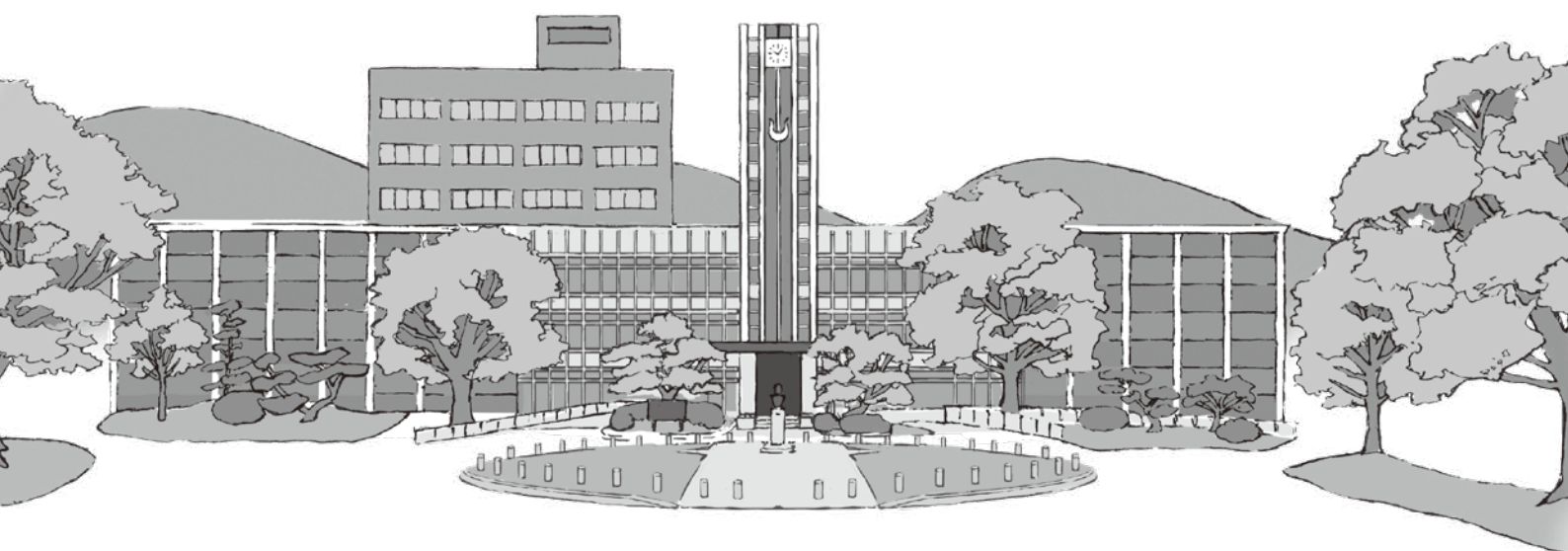
## Off-campus housing

- Students who wish to rent an apartment off-campus can contact the University Co-op for assistance. For more information, visit the website at [https://www.okayama-u.ac.jp/eng/current\\_students/Housing.html](https://www.okayama-u.ac.jp/eng/current_students/Housing.html).
- Private apartments near campus typically range from ¥30,000 to ¥60,000 per month. Security deposits and non-returnable fees totaling up to 4 months' rent are common.

## Estimated living costs for 2022 (subject to change)

	Monthly costs	Annual costs
books and supplies		¥50,000~
rent (International Student Shared House)	¥23,000	
utilities	¥10,000	
food	¥30,000	
health insurance	¥ 1,800	
personal Wi-Fi / phone	¥10,000	
miscellaneous expenses	¥10,000	
<b>TOTAL</b>	<b>¥84,800</b>	<b>¥50,000~</b>

It is recommended that you bring about ¥100,000 with you to cover initial expenses.



# Campus facilities and services

## University Co-op

The Co-op has three locations on Tsushima Campus: Peach Union, Muscat Union, and Pione Union.

The Co-op provides the following services and facilities for students:

- Subsidized cafeterias offering a range of options, including vegetarian and halal dishes
- Campus bookstore
- Convenience store, travel center, and barber shop
- Housing services and ticket sales

## L-Café

The L-Café offers an open, friendly, and supportive environment for students studying Japanese, English, and other languages. The Nihongo (Japanese) café, held twice a week, gives students a chance to practice their language skills and learn about Japanese culture. All students are welcome to drop by during opening hours, or check the calendar for scheduled events.

Website: <https://www.iess.ccsv.okayama-u.ac.jp/lcafe-e/>

## Center for Career Services

The center provides individual consultation and support for career development.

## Clubs and Circles

With a range of sports and culture clubs, including martial arts (e.g., karate, aikido), tennis, photography, tea ceremony, dance, and music, every student can find something of interest.

## University Libraries

- Okayama University libraries have the largest collection of books in Okayama.
- Students have access to the Central Library (Tsushima Campus), Shikata Branch Library, and the Institute of Plant Science and Resources Branch Library.
- The recently renovated Central Library includes rooms built with local Japanese cypress wood, creating an aromatic space especially conducive to studying.
- Students may use the Learning Commons for group study and conversation, or separate areas for quiet self-study.
- Accepted students may use the university library prior to enrollment. Detailed information is available on the University Library website at [http://www.lib.okayama-u.ac.jp/index\\_e.html](http://www.lib.okayama-u.ac.jp/index_e.html) (English) and <http://www.lib.okayama-u.ac.jp/index.html> (Japanese).

# Medical care and insurance

## Health Center

The Health Center offers periodic medical check-ups, health consultations, and other services free of charge. When necessary, the center also makes referrals to local hospitals.

## National Health Insurance

- International students who have been granted a visa valid for more than 3 months are required to join the National Health Insurance system regardless of their visa status (those on short-term or diplomatic visas are exempt), even if they are already covered by insurance in their own country.
- Applications are accepted at the municipal office. More details will be provided during the on-campus orientation.
- Health insurance premiums for students are about ¥1,800 per month and cover approximately 70% of all medical costs including hospitalization and dental care.

## Personal Accident Insurance for Students Pursuing Education and Research (*Gakkensai*), and Liability Insurance coupled with *Gakkensai* (*Futaibaiseki*)

- The university offers Personal Accident Insurance for Students Pursuing Education and Research (*Gakkensai*) and Liability Insurance coupled with *Gakkensai* (*Futaibaiseki*), provided by Japan Educational Exchanges and Services (JEES). This insurance is available to all students for an estimated one-time cost of ¥4,660 (subject to change). It covers accidents and emergencies which may occur while engaged in educational or research activities for the duration of enrollment at Okayama University.
- Insurance premiums for *Gakkensai* and *Futaibaiseki* are extremely low, and can provide peace of mind to students and parents. All students are highly encouraged to enroll in preparation for unforeseen accidents or other emergencies. Students may be required to enroll in *Gakkensai* and *Futaibaiseki* if they plan to participate in laboratory work, fieldwork, or internships.



# Admissions Policy

*The Discovery Program for Global Learners is based on collaboration and mutual learning among students of diverse backgrounds, including international students, Japanese returnees, and graduates of high schools in Japan. The program emphasizes practical learning including internships and fieldwork. Students acquire specialized knowledge through courses suited to their future goals without the restraints of faculty or departmental divisions. The university offers courses to help students discover areas they wish to explore, forging their own paths toward the future. While cooperating with others from different cultures and backgrounds, students acquire the global and practical discernment to enable them to act skillfully in problem-solving situations.*

*Students are encouraged to acquire specialized knowledge and skills through a unique program of courses of their own choosing. At the advanced stage of their learning, all students undertake a senior project. This project gives students the opportunity to further develop the ability to analyze information in a multifaceted and creative manner, and transmit precise information effectively. Students grapple with an individual research theme, which they decide for themselves under the guidance of an advising professor. Essentially, the Discovery Program helps students gain the ability to initiate action for social innovation from the local to the global level, thereby developing young leaders who are capable of contributing to the sustainable development of global society.*

## *Profile of Exemplary Candidates:*

- *Students who show interest in diverse cultures and societies, and have a desire to play an active role on the global stage.*
- *Students who are willing to actively study a broad range of fields, including foreign languages, on their own initiative.*
- *Students who are able to communicate with others well, and are prepared to tackle complex issues by cooperating with their peers.*

*In order to actively participate in the program, applicants are expected to have:*

- *Sufficient English ability to take part in problem-solving activities in collaboration with students from multicultural backgrounds.*
- *The ability to formulate personal opinions and communicate their views clearly to others.*
- *Basic knowledge and study skills required for successful learning in their selected field.*







OKAYAMA  
UNIVERSITY

University Mark

## OKAYAMA UNIVERSITY DISCOVERY PROGRAM FOR GLOBAL LEARNERS

2-1-1 Tsushima-naka, Kita-ku, Okayama 700-8530 JAPAN  
Tel.+81-86-251-7912, 7915 Fax.+81-86-251-7201  
Facebook: <https://www.facebook.com/discovery.at.ou/>  
Email: [admission\\_discovery@adm.okayama-u.ac.jp](mailto:admission_discovery@adm.okayama-u.ac.jp)

<https://discovery.okayama-u.ac.jp/en>

Discovery Program for Global Learners

Search

