

Source: Okayama University (JAPAN), Public Relations Division

For immediate release: 20 December 2022

Okayama University research: Eye scratching mechanisms in rats

(Okayama, 20 December) **In a study recently published in the journal *Proceedings of the Royal Society B*, researchers from Okayama University investigate the neurological signals behind itchy eyes in rodents and their corresponding scratching behavior.**

Anyone suffering dry skin, eczema, or insect bites will know the unpleasant effects of itchy skin. While the physiological mechanisms behind itching sensations on the skin are well understood, corresponding signals for the eyes are obscure. A research group led by Associate Professor SAKAMOTO Hirotaka from Okayama University (Ushimado Marine Institute; UMI) and Associate Professor TAKANAMI Keiko from Nara Women's University has now investigated the neural mechanisms behind itchy eyes in rodents. What's more, the group also provides insights on the limb tactics rodents adopt to mitigate this eye trouble.

Histamine, a chemical released under allergic and inflammatory conditions, is the trigger that sets into motion itching sensations. Skin-related itch signals are transmitted in neurons via a biochemical pathway known as the spinal Gastrin-releasing Peptide–Gastrin-releasing Peptide receptor (GRP-GRPR) pathway. Now, the research team has already revealed the presence of the GRP-GRPR pathway in nerves transmitting signals from the eyes to the brain, known as trigeminal ganglion (TG) nerves. Thus, this system was the main target of their study.

The researchers first studied scratching behavior in rats when their eyes were provoked with histamine drops. They found that when histamine was instilled in either the left or the right eye, the rats used the same-sided (as the troubled eye) hindfoot for scratching and soothing that eye. However, when histamine was used to trigger itchiness in both eyes together, the rats relied primarily on the right hindfoot for rubbing. The rats seemed to show a right-sided preference when it came to eye scratching.

Next, the focus moved on to biochemical pathways and the GRP-GRPR system. It was found that histamine intervention in either eye resulted in an increase in activity of GRPR-containing neurons in that side of the brainstem. It seemed likely, then, that the GRPR-containing neurons played a role in relaying itch signals from the eyes. To confirm this further, the team used a toxin to lesion these GRPR-containing neurons in the right side of the brainstems of rats. When these rats were then given histamine drops in the eyes, the incidence and duration of scratching was indeed less. A lack of active GRPR neurons resulted in diminished itch signals from their eyes.

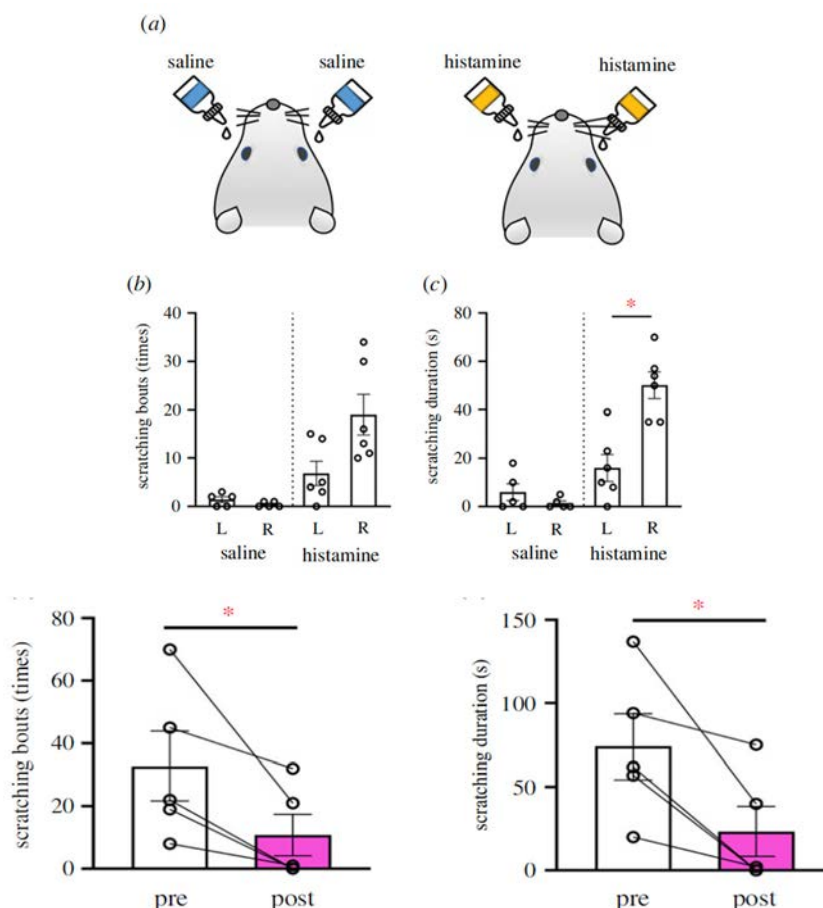
“These findings could open up a new field of research on the mechanisms of the laterality in vertebrates and also offer new potential therapeutic approaches...,” suggest the researchers. Besides revealing the right-sided preference animals have when using their

hindlimbs, the eye scratching test used here could also be used for determining the footedness of individual rodents in future experiments. In addition, the role of the GRP-GRPR system in TG nerves revealed could be the basis for treating eye conditions that cause itchiness.

**Background**

Gastrin-releasing Peptide–Gastrin-releasing Peptide receptor (GRP-GRPR) pathway: GRP is a neural chemical that plays a role in transmitting signals across the nervous system. Based on the location of the nerves carrying GRP, the signals vary. Nerves carrying GRP are connected to another set of nerves which contain GRPR—a partner for the GRP molecules being transmitted. When the two connect, biochemical signals are triggered in the brain.

Trigeminal ganglion (TG) neurons from the eyes carry GRP molecules into the bottom part of the brain. A region known as the spinal trigeminal nucleus caudalis (Sp5C) in this part of the brain is found to be rich in incoming GRP-containing nerve endings. Moreover, the Sp5C is abundant in GRPR. Thus, in this study the researchers targeted GRPR neurons in the Sp5C using a toxin to observe the role of this pathway in eye itchiness.



**Figure**

**Top.** The frequency and duration of itching using right (R) or left (L) hindfeet when histamine was instilled in both eyes of rats.

**Bottom.** The frequency and duration of eye itching after GRPR neurons were lesioned in the brain.

## Reference

Yukitoshi Katayama, Ayane Miura, Tatsuya Sakamoto, Keiko Takanami and Hirotaka Sakamoto. Footedness for scratching itchy eyes in rodents. *Proc. R. Soc. B*, 289: 20221126.

DOI : 10.1098/rspb.2022.1126

<https://royalsocietypublishing.org/doi/10.1098/rspb.2022.1126>

## Correspondence to

Associate Professor SAKAMOTO Hirotaka, Ph.D.  
Ushimado Marine Institute (UMI), Graduate School of Natural  
Science and Technology, Okayama University, Ushimado,  
Setouchi-shi, Okayama 701-4303, Japan.

E-mail: [hsakamo@okayama-u.ac.jp](mailto:hsakamo@okayama-u.ac.jp)

<https://www.science.okayama-u.ac.jp/~rinkai/en/index.html>



Associate Professor  
SAKAMOTO Hirotaka

## Further information

Okayama University  
1-1-1 Tsushima-naka , Kita-ku , Okayama 700-8530, Japan  
Public Relations Division

E-mail: [www-adm@adm.okayama-u.ac.jp](mailto:www-adm@adm.okayama-u.ac.jp)

Website: [http://www.okayama-u.ac.jp/index\\_e.html](http://www.okayama-u.ac.jp/index_e.html)

Okayama Univ. e-Bulletin: <http://www.okayama-u.ac.jp/user/kouhou/ebulletin/>

We love OKAYAMA UNIVERSITY:

<https://www.youtube.com/watch?v=7cXlIttQIk3E>

Okayama University Image Movie (2020):

<https://www.youtube.com/watch?v=vQxeL0ztSLA>

Okayama University supports the Sustainable Development Goals: <https://sdgs.okayama-u.ac.jp/en/>



## Okayama University Medical Research Updates (OU-MRU)

The whole volume: [OU-MRU \(1- \)](#)

Vol.1 : [Innovative non-invasive 'liquid biopsy' method to capture circulating tumor cells from blood samples for genetic testing](#)

Vol.2 : [Ensuring a cool recovery from cardiac arrest](#)

Vol.3 : [Organ regeneration research leaps forward](#)

Vol.4 : [Cardiac mechanosensitive integrator](#)

Vol.5 : [Cell injections get to the heart of congenital defects](#)

Vol.6 : [Fourth key molecule identified in bone development](#)

- Vol.7 : [Anticancer virus solution provides an alternative to surgery](#)
- Vol.8 : [Light-responsive dye stimulates sight in genetically blind patients](#)
- Vol.9 : [Diabetes drug helps towards immunity against cancer](#)
- Vol.10 : [Enzyme-inhibitors treat drug-resistant epilepsy](#)
- Vol.11 : [Compound-protein combination shows promise for arthritis treatment](#)
- Vol.12 : [Molecular features of the circadian clock system in fruit flies](#)
- Vol.13 : [Peptide directs artificial tissue growth](#)
- Vol.14 : [Simplified boron compound may treat brain tumours](#)
- Vol.15 : [Metamaterial absorbers for infrared inspection technologies](#)
- Vol.16 : [Epigenetics research traces how crickets restore lost limbs](#)
- Vol.17 : [Cell research shows pathway for suppressing hepatitis B virus](#)
- Vol.18 : [Therapeutic protein targets liver disease](#)
- Vol.19 : [Study links signalling protein to osteoarthritis](#)
- Vol.20 : [Lack of enzyme promotes fatty liver disease in thin patients](#)
- Vol.21 : [Combined gene transduction and light therapy targets gastric cancer](#)
- Vol.22 : [Medical supportive device for hemodialysis catheter puncture](#)
- Vol.23 : [Development of low cost oral inactivated vaccines for dysentery](#)
- Vol.24 : [Sticky molecules to tackle obesity and diabetes](#)
- Vol.25 : [Self-administered aroma foot massage may reduce symptoms of anxiety](#)
- Vol.26 : [Protein for preventing heart failure](#)
- Vol.27 : [Keeping cells in shape to fight sepsis](#)
- Vol.28 : [Viral-based therapy for bone cancer](#)
- Vol.29 : [Photoreactive compound allows protein synthesis control with light](#)
- Vol.30 : [Cancer stem cells' role in tumor growth revealed](#)
- Vol.31 : [Prevention of RNA virus replication](#)
- Vol.32 : [Enzyme target for slowing bladder cancer invasion](#)
- Vol.33 : [Attacking tumors from the inside](#)
- Vol.34 : [Novel mouse model for studying pancreatic cancer](#)
- Vol.35 : [Potential cause of Lafora disease revealed](#)
- Vol.36 : [Overloading of protein localization triggers cellular defects](#)
- Vol.37 : [Protein dosage compensation mechanism unravelled](#)
- Vol.38 : [Bioengineered tooth restoration in a large mammal](#)
- Vol.39 : [Successful test of retinal prosthesis implanted in rats](#)
- Vol.40 : [Antibodies prolong seizure latency in epileptic mice](#)
- Vol.41 : [Inorganic biomaterials for soft-tissue adhesion](#)
- Vol.42 : [Potential drug for treating chronic pain with few side effects](#)
- Vol.43 : [Potential origin of cancer-associated cells revealed](#)
- Vol.44 : [Protection from plant extracts](#)
- Vol.45 : [Link between biological-clock disturbance and brain dysfunction uncovered](#)
- Vol.46 : [New method for suppressing lung cancer oncogene](#)
- Vol.47 : [Candidate genes for eye misalignment identified](#)
- Vol.48 : [Nanotechnology-based approach to cancer virotherapy](#)
- Vol.49 : [Cell membrane as material for bone formation](#)
- Vol.50 : [Iron removal as a potential cancer therapy](#)

- Vol.51 : [Potential of 3D nanoenvironments for experimental cancer](#)
- Vol.52 : [A protein found on the surface of cells plays an integral role in tumor growth and sustenance](#)
- Vol.53 : [Successful implantation and testing of retinal prosthesis in monkey eyes with retinal degeneration](#)
- Vol.54 : [Measuring ion concentration in solutions for clinical and environmental research](#)
- Vol.55 : [Diabetic kidney disease: new biomarkers improve the prediction of the renal prognosis](#)
- Vol.56 : [New device for assisting accurate hemodialysis catheter placement](#)
- Vol.57 : [Possible link between excess chewing muscle activity and dental disease](#)
- Vol.58 : [Insights into mechanisms governing the resistance to the anti-cancer medication cetuximab](#)
- Vol.59 : [Role of commensal flora in periodontal immune response investigated](#)
- Vol.60 : [Role of commensal microbiota in bone remodeling](#)
- Vol.61 : [Mechanical stress affects normal bone development](#)
- Vol.62 : [3D tissue model offers insights into treating pancreatic cancer](#)
- Vol.63 : [Promising biomarker for vascular disease relapse revealed](#)
- Vol.64 : [Inflammation in the brain enhances the side-effects of hypnotic medication](#)
- Vol.65 : [Game changer: How do bacteria play Tag?](#)
- Vol.66 : [Is too much protein a bad thing?](#)
- Vol.67 : [Technology to rapidly detect cancer markers for cancer diagnosis](#)
- Vol.68 : [Improving the diagnosis of pancreatic cancer](#)
- Vol.69 : [Early gastric cancer endoscopic diagnosis system using artificial intelligence](#)
- Vol.70 : [Prosthetics for Retinal Stimulation](#)
- Vol.71 : [The nervous system can contribute to breast cancer progression](#)
- Vol.72 : [Synthetic compound provides fast screening for potential drugs](#)
- Vol.73 : [Primary intraocular lymphoma does not always spread to the central nervous system](#)
- Vol.74 : [Rising from the ashes—dead brain cells can be regenerated after traumatic injury](#)
- Vol.75 : [More than just daily supplements — herbal medicines can treat stomach disorders](#)
- Vol.76 : [The molecular pathogenesis of muscular dystrophy-associated cardiomyopathy](#)
- Vol.77 : [Green leafy vegetables contain a compound which can fight cancer cells](#)
- Vol.78 : [Disrupting blood supply to tumors as a new strategy to treat oral cancer](#)
- Vol.79 : [Novel blood-based markers to detect Alzheimer's disease](#)
- Vol.80 : [A novel 3D cell culture model sheds light on the mechanisms driving fibrosis in pancreatic cancer](#)
- Vol.81 : [Innovative method for determining carcinogenicity of chemicals using iPS cells](#)
- Vol.82 : [Making memories — the workings of a neuron revealed](#)
- Vol.83 : [Skipping a beat — a novel method to study heart attacks](#)
- Vol.84 : [Friend to Foe—When Harmless Bacteria Turn Toxic](#)
- Vol.85 : [Promising imaging method for the early detection of dental caries](#)
- Vol.86 : [Plates and belts — a toolkit to prevent accidental falls during invasive vascular procedures](#)
- Vol.87 : [Therapeutic potential of stem cells for treating neurodegenerative disease](#)
- Vol.88 : [Nanotechnology for making cancer drugs more accessible to the brain](#)

- Vol.89 : [Studying Parkinson's disease with face-recognition software](#)
- Vol.90 : [High levels of television exposure affect visual acuity in children](#)
- Vol.91 : [Meeting high demand: Increasing the efficiency of antiviral drug production in bacteria](#)
- Vol.92 : [Numerical modelling to assist the development of a retinal prosthesis](#)
- Vol.93 : [Repurposing cancer drugs: An innovative therapeutic strategy to fight bone cancer](#)
- Vol.94 : [A berry vine found in Asia proves useful in combating lung cancer](#)
- Vol.95 : [A new avenue for detecting cancer in the blood](#)
- Vol.96 : [Automated cell image analysis](#)
- Vol.97 : [Artificial intelligence helps to determine cancer invasion](#)
- Vol.98 : [Okayama University launches clinical trials of a jawbone regeneration therapy using human BMP-2 transgenic protein derived from \*Escherichia coli\*.](#)
- Vol.99 : [A rapid flow process that can convert droplets into multilayer polymeric microcapsules](#)
- Vol.100 : [Understanding insect leg regeneration](#)
- Vol.101 : [Oral tumor progression mechanism identified](#)
- Vol.102 : [Controlled cell death by irradiation with light](#)
- Vol.103 : [High-quality growth](#)
- Vol.104 : [The determinants of persistent and severe COVID-19 revealed](#)
- Vol.105 : [The dynamics of skin regeneration revealed](#)
- Vol.106 : [The skin electrically modelled](#)
- Vol.107 : [COVID-19 mRNA vaccines and fever: A possible new link](#)
- Vol.108 : [Track changes: A new test to study cancer progression](#)



Okayama University Ushimado Marine Institute (UMI)  
<https://www.science.okayama-u.ac.jp/~rinkai/en/index.html>



Okayama University supports the Sustainable Development Goals

◆About Okayama University

Okayama University is one of the largest comprehensive universities in Japan with roots going back to the Medical Training Place sponsored by the Lord of Okayama and established in 1870. Now with 1,300 faculty and 13,000 students, the University offers courses in specialties ranging from medicine and pharmacy to humanities and physical sciences.

Okayama University is located in the heart of Japan approximately 3 hours west of Tokyo by Shinkansen.

Website: [http://www.okayama-u.ac.jp/index\\_e.html](http://www.okayama-u.ac.jp/index_e.html)



Japan (日本)



Hirofumi Makino, M.D., Ph.D.  
President, Okayama University



Japan.  
Committed to SDGs



岡山大学  
OKAYAMA UNIVERSITY



“Okayama University supports the Sustainable Development Goals”



**Okayama University Integrated Report**

=> [click](#)



An integrated report is intended to explain how an organization creates value over time through an organic integration of the vision and the combination of financial information and other information. Through this report we hope to promote greater interest in Okayama University among readers everywhere. In order to help us make improvements in future editions, we encourage you to contact us with any comments and suggestions you may have.