

岡山大学

OKAYAMA UNIVERSITY

2015

PROSPECTUS



OKAYAMA UNIV.

GLOBAL GATE FOR LEARNING



OKAYAMA UNIVERSITY Prospectus 2015

CONTENTS

1	■ Presidents
1	■ Academic Calendar
2	■ OKAYAMA UNIVERSITY —Our Mission Statement
3	■ Administrative Staff
5	■ Members of the Management Council
5	■ Members of the Board of Trustees for Education and Research
6	■ Historical Timeline
8	■ Organization Chart
10	■ Staff
12	■ Graduate Schools
17	■ Postgraduate Course, Vocational Course
18	■ Faculties
22	■ Attached Schools
23	■ International Exchange
28	■ University Hospital
29	■ University Libraries
29	■ OKAYAMA UNIVERSITY Press
30	■ Joint Usage / Research Center
30	■ Joint Usage / Education Center
31	■ Organization
32	■ University-Wide Centers
34	■ Strategic Office for Education and Research
35	■ Organization for Diversity Management
35	■ Tokyo Office, Overseas Offices
36	■ University Union, 50th Anniversary Hall
36	■ Student Dormitory
37	■ Revenue and Expenditure / Budget
38	■ Scientific Research Grant
39	■ Land and Buildings
41	■ Location
42	■ Campus Map



Presidents



13th President

MORITA, Kiyoshi,
M. D., Ph. D.

HAYASHI, Michitomi	May	31, 1949	— June	28, 1949 *
HAYASHI, Michitomi	June	29, 1949	— July	25, 1952
SHIMIZU, Tomihide	July	26, 1952	— January	30, 1958
FUJIWARA, Hidekatsu	January	31, 1958	— May	31, 1958 *
YAGI, Hideo	June	1, 1958	— May	31, 1962
HATTORI, Shizuo	June	1, 1962	— April	30, 1964
AKAGI, Goro	May	1, 1964	— May	9, 1969
TANIGUCHI, Sumio	May	9, 1969	— June	14, 1969 *
TANIGUCHI, Sumio	June	14, 1969	— June	13, 1975
KOSAKA, Kiyowo	June	14, 1975	— June	13, 1981
OFUJI, Tadashi	June	14, 1981	— June	13, 1987
TAKAHASHI, Katsuaki	June	14, 1987	— June	13, 1993
KOSAKA, Futami	June	14, 1993	— June	13, 1999
KONO, Iichiro	June	14, 1999	— June	13, 2005
CHIBA, Kyoza	June	14, 2005	— March	31, 2011
MORITA, Kiyoshi	April	1, 2011	—	

Note : Asterisks, " * ", show acting Presidents.

Academic Calendar

April 1	Academic Year begins. First Semester begins. Spring Vacation (until April 7)
April 8	Entrance Ceremony
August 1	Summer Vacation (until September 30)
September 30	First Semester ends.
October 1	Second Semester begins.
October 22	University Anniversary
December 25	Winter Vacation (until January 7)
March 25	Graduation Ceremony
March 31	Second Semester ends. Academic Year ends.



Entrance Ceremony



Graduation Ceremony

1 Our Mission

“Creating and fostering higher knowledge and wisdom”

How can we, the human race, develop and grow in a steady and sustainable manner for the sake of future generations? At Okayama University, we have the answer. It is imperative that we build up our knowledge in order to advance education and research. As a public institution of higher learning, we are committed to contributing to this advancement by providing a positive environment for the creation of higher knowledge through research and the passing on of wisdom to younger generations through education and community service.

2 Our Purpose

“Building up a new paradigm for a sustainable world”

As one of the leading universities in Japan, we aim to create and establish a new paradigm for the sustainable development of the world. We are being confronted with problems of global proportions in terms of the environment, energy issues, food supplies, economics, health, security and education. Thus, we are constantly seeking ways for humans to co-exist in harmony with nature. With this in mind, our university offers a wide range of academic fields, which are the basis of our integrated graduate schools. This not only allows us to conduct the most advanced and up-to-date research, but also provides an enriching educational experience.

3 Our Goals

(1) For education

Okayama University’s most important mission is to provide an enriching educational environment for our students. Our commitment to each and every student is to offer them meaningful interaction with the university faculty and staff, whether it be in classroom settings or one-on-one tutorials. In this way, we hope to develop graduates who can think critically and logically and who can contribute to society.

(2) For research

We believe that the research we engage in is a fundamental basis for the innovation and creativity in this university. We are striving to become one of the leading research institutions of Japan and the world.

(3) For society

As an institution of higher learning, Okayama University creates a wide range of knowledge and technologies which can be used to help solve the problems of society and we interactive with the outside community.

(4) For administration

To achieve our goals in research and education by the highly efficient management system, we can make even better use of the resources from our own faculties, staff, and facilities.

(5) For self-evaluation

To provide accountability as a public institution, we constantly evaluate our work in research, education, our contribution to society, and university management. The results of these evaluations are taken into account for future university reform.

Administrative Staff

As of September 1, 2015

Executives

President	MORITA, Kiyoshi
Executive Director and Vice-President (Planning and General Affairs)	ABE, Hirofumi
Executive Director and Vice-President (Education)	HUH, Nam-ho
Executive Director and Vice-President (Research)	YAMAMOTO, Shin-ichi
Executive Director and Vice-President (Social Responsibility and International Affairs)	ARAKI, Masaru
Executive Director and Vice-President (University Reform)	TANIGUCHI, Hideo
Executive Director (University Hospital)	MAKINO, Hirofumi
Executive Director (Finance and Facilities)	KADOOKA, Hirokazu
Inspector	YOSHIKAWA, Masahiro
Inspector (Non-executive)	AOI, Kenpei
Vice-President (General Affairs)	YOSHINO, Tadashi
Vice-President (Educational Organization Reform in Humanities and Social Sciences)	HARUNA, Shoji
Vice-President (Legal Affairs and Compliance)	MIYAMOTO, Yumiko
Vice-President (Admissions Reform)	TAHARA, Makoto
Vice-President (Learning Environment and Libraries)	OKI, Yoko
Vice-President (International Affairs)	YAMAMOTO, Yoko
Vice-President (Global Human Resource Development and External Affairs)	KURIHARA, Koji
Vice-President (International and Multidisciplinary Graduate Programs)	SENO, Masaharu
Vice-Executive Director	FURUYA, Shuichi
Vice-Executive Director	ANAZAWA, Kazuo
Vice-Executive Director	MIYAWAKI, Takuya
Vice-Executive Director	NASU, Yasutomo
President's Aide (Legal Affairs and Compliance)	YOSHINO, Natsumi
President's Aide (Legal Affairs and Compliance)	YOSHIZAWA, Toru
President's Aide (University Reform)	GOTO, Kuniaki
President's Aide (University Reform)	MATSUKAWA, Akihiro
President's Aide (University Reform)	KUROKAMI, Naozumi
Senior Adviser	SEJIMA, Kazuyo
Senior Adviser	NISHIZAWA, Ryue
Senior Adviser	KITAGAWA, Furamu
Senior Adviser	OOHARA, Ken-ichiro

Corporation Audit Office

Director of Corporation Audit Office	CHUTA, Atsushi
--------------------------------------	----------------

University Reform Office

Director of University Reform Office	TOKUYAMA, Hisatake
--------------------------------------	--------------------

Public Relations and Information Strategy

Director of Public Relations and Information Strategy	KAYANO, Tomoko
---	----------------

Administration Bureau

Director General	KADOOKA, Hirokazu
Coordinator (International Affairs)	ANAZAWA, Kazuo
Director of General Affairs and Planning Department	MORIYAMA, Tsuruo
Director of General Affairs Division	TAKATSUKI, Kiichiro
Director of Personnel Division	KONDA, Yasuyuki
Director of Community Relations Support Office	KONDO, Kazuhiko
Director of Legal Affairs and Compliance Office	MORIYAMA, Tsuruo
Director of Academic Affairs Department	TAGASHIRA, Yoshikazu
Director of Academic Planning Division	SAKAMOTO, Yasuhiko
Director of Student Support Division	HIGASHI, Masafumi
Director of Admission Division	OGINO, Masayuki
Director of Research Cooperation Department	MATSUI, Kazukiyo
Director of Research Cooperation and Planning Division	NAKAYAMA, Ryo
Director of Industry Cooperation Promotion Division	HAYASHI, Takashi
Director of Safety and Health Department	KAWAMOTO, Akihito
Director of Health Division	MINE, Mitsuhiro
Director of Safty Division	OSHIMA, Yasuo
Director of Finance Department	ABE, Eiichi
Director of Finance Planning Division	YANO, Mitsushige

Director of Accounting Division	MATSUURA, Masahiro
Director of Contract Division	SUTO, Haruo
Director of Facilities Planning Department	SUSAKI, Shigehiro
Director of Facilities Planning Division	KAGEYAMA, Shinji
Director of Facilities Maintenance Division	KOBAYASHI, Keiji
Director of Facilities Improvement Division	IWASA, Kazunori

Graduate School of Education

Dean	TAKATSUKA, Shigenobu
Vice-Dean	MIMURA, Yukari
Vice-Dean	SATO, Sono
Vice-Dean	NAKAYA, Akitaka
Director of Administration Office	ATO, Shunji

Graduate School of Humanities and Social Sciences

Dean	SANO, Hiroshi
Vice-Dean	KAWAHARA, Yuma
Vice-Dean	CHOU, Seigen
Vice-Dean	DEMURA, Kazuhiko
Director of Administration Office	KENMOTSU, Hiroyasu
Director of Center for East Asian Studies	SANO, Hiroshi

Graduate School of Natural Science and Technology

Dean	TANAKA, Hideki
Vice-Dean	ICHIOKA, Masanori
Vice-Dean	TSURUTA, Kenji
Vice-Dean	TADA, Naoya
Director of Administration Office	MATSUBARA, Toshimasa
Director of General Affairs Division	KANEDA, Shuhei
Director of Accounting Division	NAGASUNA, Tsuyoshi
Director of Student Affairs Division	CHIKATSUNE, Satoshi
Director of Administration Office for Faculty of Science	TAKAHASHI, Shinji
Director of Administration Office for Faculty of Environmental Science and Technology	SHIRAHIGE, Akira
Director of Administration Office for Faculty of Agriculture	HAYAKAWA, Midori
Director of Photosynthesis Research Center	SHEN, Jian-Ren

Graduate School of Health Sciences

Dean	TAKEDA, Yoshihiro
Vice-Dean	INOSHITA, Hikari
Vice-Dean	OKA, Hisao

Graduate School of Environmental and Life Science

Dean	KANZAKI, Hiroshi
Vice-Dean	SAKAMOTO, Keiji
Vice-Dean	SUITOU, Hiroshi
Vice-Dean	FUJIWARA, Takeshi

Graduate School of Medicine, Dentistry and Pharmaceutical Sciences

Dean	TANIMOTO, Mitsune
Vice-Dean	ASAUMI, Junichi
Vice-Dean	MIYACHI, Hiroyuki
Vice-Dean	OHTSUKA, Aiji
Vice-Dean	KUBOKI, Takuo
Vice-Dean	HIGAKI, Kazutaka
Director of Administration Office	TAGUCHI, Hiroshi
Director of General Affairs Division	UEDA, Hiroshi
Director of Student Affairs Division	IMANISHI, Masaru
Director of Administrative Office for Pharmacy	ARIKAWA, Syoji
Director of Medicinal Plant Garden	HIGAKI, Kazutaka
Director of Collaborative Research Center for OMIC	TANIMOTO, Mitsune
Director of Medical Education Renovation Center	MATSUKAWA, Akihiro

School of Law

Dean	KANREI, Yasuhiro
Vice-Dean	SATOU, Goro
Vice-Dean	NISHIDA, Kazuhiro
Director of Attorney Training Center	YOSHINO, Natsumi

Faculty of Letters

Dean	KANASEKI, Takeshi
Vice-Dean	MIYAZAKI, Kazuhito
Vice-Dean	NAKATANI, Ayami

Faculty of Education

Dean	TAKATSUKA, Shigenobu
Vice-Dean	MIMURA, Yukari
Vice-Dean	SATO, Sono
Vice-Dean	NAKAYA, Akitaka

Principal of Kindergarten	KAJITANI, Nobuyuki
Principal of Primary School	KAWATA, Tetsunori
Principal of Junior High School	HIRAI, Yasuhisa
Principal of School for Special Needs Education	HASHIGAYA, Yoshimasa

Faculty of Law

Dean	KOYAMA, Masayoshi
Vice-Dean	YOSHIOKA, Shinichi
Vice-Dean	HATANO, Satoshi

Faculty of Economics

Dean	MATSUMOTO, Toshiro
Vice-Dean	HIRANO, Masaki
Vice-Dean	NAKAMURA, Ryohei

Faculty of Science

Dean	YOSHINO, Yuji
Vice-Dean	NOHARA, Minoru
Vice-Dean	TOMIOKA, Kenji
Director of Ushimado Marine Institute	SAKAMOTO, Tatsuya
Director of Research Laboratory for Surface Science	YOKOTANI, Takayoshi
Director of Research Center of Quantum Universe	NOHARA, Minoru

Medical School

Dean	OHTSUKA, Aiji
Vice-Dean	HAMADA, Jun
Vice-Dean	SAITOH, Shinya

Dental School

Dean	KUBOKI, Takuo
Vice-Dean	OHARA, Naoya
Vice-Dean	MORITA, Manabu
Director of Advanced Research Center for Oral and Craniofacial Sciences (ARCOCS)	TAKIGAWA, Masaharu
Director of Center for Promotion of Dental Education and International Collaboration (CDI)	KUBOKI, Takuo

Faculty of Pharmaceutical Sciences

Dean	HIGAKI, Kazutaka
Vice-Dean	KUROSAKI, Yuji
Vice-Dean	MIYOSHI, Shin-ichi

Faculty of Engineering

Dean	TOMITA, Eiji
Vice-Dean	YOKOHIRA, Tokumi
Vice-Dean	ABE, Masanobu
Vice-Dean	SUGA, Seiji

Faculty of Environmental Science and Technology

Dean	KIMURA, Kunio
Vice-Dean	MOROIZUMI, Toshitsugu
Vice-Dean	NANBA, Tokuro

Faculty of Agriculture

Dean	MONTA, Mitsui
Vice-Dean	KIMURA, Yoshinobu
Vice-Dean	KUBO, Yasutaka
Director of Field Science Center	YOSHIDA, Yuichi

Institute of Plant Science and Resources

Director	MAEKAWA, Masahiko
Vice-Director	SAKAMOTO, Wataru
Director of Administration Office	KAWAGUCHI, Katsumi
Director of Barley and Wild Plant Resource Center	SATO, Kazuhiro

University Hospital

Director	MAKINO, Hirofumi
Vice-Director	KANAZAWA, Susumu
Vice-Director	DATE, Isao
Vice-Director	IIDA, Seiji
Vice-Director	OZAKI, Toshifumi
Vice-Director	NASU, Yasutomo
Vice-Director	MIYAWAKI, Takuya
Vice-Director	IWATSUKI, Keiji
Vice-Director	MAEKAWA, Tamaki
Director of Misasa Medical Center	MITSUBU, Fumihiko
Director of Administration Office	OIWA, Junichi
Director of Planning Office	FUJIWARA, Koichi
Director of General Affairs Division	YAMAGUCHI, Futoshi
Director of Research Promotion Division	YASUTOMO, Masao
Director of Management Division	HASEGAWA, Takuya

Director of Facilities Management Division	KAYAHARA, Isao
Director of Medical Affairs Division	KIMURA, Katsuhiro
Director of Administration Office of Misasa Medical Center	OGURA, Shigemi

University-Wide Center

Director of Quality Assurance Center	YAMADA, Masao
Director of Health Service Center	OGURA, Toshio
Director of Environmental Management Center	KAWAMOTO, Katsuya
Director of Center for Information Technology and Management	TANIGUCHI, Hideo
Vice-Director of Center for Information Technology and Management	HIEDA, Takashi
Director of Administration Office of Center for Information Technology and Management	SAKEMI, Fumihiko
Director of Center for Faculty Development	HUH, Nam-ho
Vice-Director of Center for Faculty Development	SASAKI, Kenji
Director of Language Education Center	KURIHARA, Koji
Vice-Director of Language Education Center	KENMOTSU, Yoshi
Director of Interactive Sport Education Center	HUH, Nam-ho
Vice-Director of Interactive Sport Education Center	SUZUKI, Hisao
Director of Center for Safe and Disaster-Resistant Society	SUZUKI, Kazuhiko
Vice-Director of Center for Safe and Disaster-Resistant Society	KAWAMURA, Katsuyuki
Director of Educational Center for Researchers of the Next Generation	HUH, Nam-ho
Vice-Director of Educational Center for Researchers of the Next Generation	MINO, Michinobu
Director of Student Support Center	HUH, Nam-ho
Director of Career Development Center	HUH, Nam-ho
Vice-Director of Career Development Center	SAKAIRI, Shinya
Director of Career Support Center for Young Researchers	ABE, Hirofumi
Vice-Director of Career Support Center for Young Researchers	INAGAKI, Kenji
Director of Admission Center	TAHARA, Makoto
Vice-Director of Admission Center	TANAKA, Katsumi
Director of Center for Global Partnerships and Education	YAMAMOTO, Yoko
Vice-Director of Center for Global Partnerships and Education	ANAZAWA, Kazuo
Vice-Director of Center for Global Partnerships and Education	MURATA, Yoshiyuki
Vice-Director of Center for Global Partnerships and Education	EMMI, Yoshito
Director of Administration Department of Center for Global Partnerships and Education	ANAZAWA, Kazuo
Director of International Affairs Division, Center for Global Partnerships and Education	HARADA, Miki
Director of International Student Division, Center for Global Partnerships and Education	HIKICHI, Tomohiko
Director of Institute of Global Human Resource Development	ARAKI, Masaru
Vice-Director of Institute of Global Human Resource Development	KURIHARA, Koji
Vice-Director of Institute of Global Human Resource Development	YAMAMOTO, Yoko
Director of Academic and General Okayama University Regional Research Association	ARAKI, Masaru
Vice-Director of Academic and General Okayama University Regional Research Association	MIMURA, Satoshi
Vice-Director of Academic and General Okayama University Regional Research Association	MAEDA, Yoshio
Director of Center for Teacher Education and Development	TAKATSUKA, Shigenobu
Vice-Director of Center for Teacher Education and Development	KAGA, Masaru
Vice-Director of Center for Teacher Education and Development	YAMANE, Fumio

Director of Center for the Development of Medical and Health Care Education	TANIMOTO, Mitsune
Vice-Director of Center for the Development of Medical and Health Care Education	MANDAI, Yasuhiro
Director of Advanced Science Research Center	YAMAMOTO, Shin-ichi
Vice-Director of Advanced Science Research Center	ONO, Toshiro
Director of Assisted Reproductive Technology Center	MONTA, Mitsuji
Vice-Director of Assisted Reproductive Technology Center	NAKATSUKA, Mikiya
Director of Waste Management Research Center	KANZAKI, Hiroshi
Vice-Director of Waste Management Research Center	FUJIWARA, Takeshi
Director of Archaeological Research Center	KADOOKA, Hirokazu
Vice-Director of Archaeological Research Center	NIIRO, Izumi

Nationwide Joint-use Facility

Director of Institute for Study of the Earth's Interior	NAKAMURA, Eizo
Vice-Director of Institute for Study of the Earth's Interior	KAWAMURA, Katsuyuki
Vice-Director of Institute for Study of the Earth's Interior	KANZAKI, Masami
Director of Administration Office of Institute for Study of the Earth's Interior	YAMAZAKI, Masahiro

University Libraries

Director	OKI, Yoko
Vice-Director	GOFUKU, Akio
Vice-Director	IMAZU, Katsunori
Director, Shikata Branch Library	KATO, Nobuyuki
Director, Institute of Plant Science and Resources Branch Library	MURATA, Minoru
Director of Administration Office	YAMADA, Shuji
Director of Information Management and Processing Division	OOMOTO, Toshihiko
Director of Academic Information Service Division	YAMADA, Shuji

Education Initiative

Director	HUH, Nam-ho
Vice-Director	MATSUKAWA, Akihiro

Organization for Education and Student Support

Director	HUH, Nam-ho
Vice-Director	SASAKI, Kenji

Organization for Research Promotion & Collaboration

Director	YAMAMOTO, Shin-ichi
Vice-Director	OMOTO, Tetsuro
Vice-Director	FUJIWARA, Takanori

Environment Health & Safety Intelligence Department

Director	KADOOKA, Hirokazu
Vice-Director	MIYAZAKI, Takafumi

Members of the Management Council

As of May 1, 2015

President	MORITA, Kiyoshi	President, International Christian University	HIBIYA, Junko
Executive Director and Vice-President (Planning and General Affairs)	ABE, Hirofumi	Chairman, Okayama Prefectural Citizens Council for Youth Development	KADONO, Yasuo
Executive Director and Vice-President (Education)	HUH, Nam-ho	Mayor, City of Kurashiki	ITO, Kaori
Executive Director and Vice-President (Research)	YAMAMOTO, Shin-ichi	Director Emeritus, Okayama Saiseikai General Hospital	ITOSHIMA, Tatsuya
Executive Director and Vice-President (Social Responsibility and International Affairs)	ARAKI, Masaru	Lawyer	KOBAYASHI, Yasuhiko
Executive Director and Vice-President (University Reform)	TANIGUCHI, Hideo	Chairman & CEO, The Sanyo Shimbun	KOSHIMUNE, Takamasa
Executive Director (University Hospital)	MAKINO, Hirofumi	Chairman, The Chugoku Bank, Ltd.	IZUMI, Fumihiro
Executive Director (Finance and Facilities)	KADOOKA, Hirokazu	President, Cross Company Inc.	ISHIKAWA, Yasuharu
		President, Okayama Toyota Motor Corporation	KAJITANI, Shunsuke

Members of the Board of Trustees for Education and Research

As of May 1, 2015

President	MORITA, Kiyoshi	Dean, Graduate School of Environmental and Life Science	KANZAKI, Hiroshi
Executive Director and Vice-President (Planning and General Affairs)	ABE, Hirofumi	Dean, Graduate School of Medicine, Dentistry and Pharmaceutical Sciences	TANIMOTO, Mitsune
Executive Director and Vice-President (Education)	HUH, Nam-ho	Dean, School of Law	KANREI, Yasuhiro
Executive Director and Vice-President (Research)	YAMAMOTO, Shin-ichi	Dean, Faculty of Letters	KANASEKI, Takeshi
Executive Director and Vice-President (Social Responsibility and International Affairs)	ARAKI, Masaru	Dean, Faculty of Law	KOYAMA, Masayoshi
Executive Director and Vice-President (University Reform)	TANIGUCHI, Hideo	Dean, Faculty of Economics	MATSUMOTO, Toshiro
Executive Director (University Hospital)	MAKINO, Hirofumi	Dean, Faculty of Science	YOSHINO, Yuji
Executive Director (Finance and Facilities)	KADOOKA, Hirokazu	Dean, Medical School	OHTSUKA, Aiji
Dean, Graduate School of Education	TAKATSUKA, Shigenobu	Dean, Dental School	KUBOKI, Takuo
Dean, Faculty of Education		Dean, Faculty of Pharmaceutical Sciences	HIGAKI, Kazutaka
Dean, Graduate School of Humanities and Social Sciences	SANO, Hiroshi	Dean, Faculty of Engineering	TOMITA, Eiji
Dean, Graduate School of Natural Science and Technology	TANAKA, Hideki	Dean, Faculty of Environmental Science and Technology	KIMURA, Kunio
Dean, Graduate School of Health Sciences	TAKEDA, Yoshihiro	Dean, Faculty of Agriculture	MONTA, Mitsuji
		Director, Institute of Plant Science and Resources	MAEKAWA, Masahiko
		Director, Institute for Study of the Earth's Interior	NAKAMURA, Eizo

Historical Timeline

1870

Medical Training Place Sponsored by the Lord of Okayama

1872

Medical Training Center Sponsored by the Lord of Okayama

1872

Prefectural Medical Teaching Center

1880

Okayama Prefectural Medical School

1888

The Third Higher Middle School Medical Faculty

1894

The Third Senior High School Medical Faculty

1901

Okayama Medical Speciality School

1922
(superseded in 1960)

Okayama Medical College

(1939)
(superseded in 1952)

Affiliated Medical Speciality

(superseded in 1950)

1900
The Sixth Higher School



Opening Ceremony of Okayama University (Oct. 22, 1949)

2004

National University Corporation Okayama University

1949

Okayama University

1874

Onchi School

1876

Okayama Prefectural Normal School

1885

Okayama School

1886

Okayama Ordinary Normal School

1898

Okayama Prefectural Normal School

1902
Okayama Prefectural Women's Normal School

1922
Okayama Prefectural School for Training Teachers of Vocational Supplementary School

1935
Okayama School for Training Teachers of Youth's School

1944
(superseded in 1951)
Okayama Youth's Normal School

1924
Okayama Prefectural School for Training Teachers of Girls' Vocational Supplementary School

1936
Okayama Prefectural School for Training Teachers of Girls' School

1946
Okayama Agricultural College

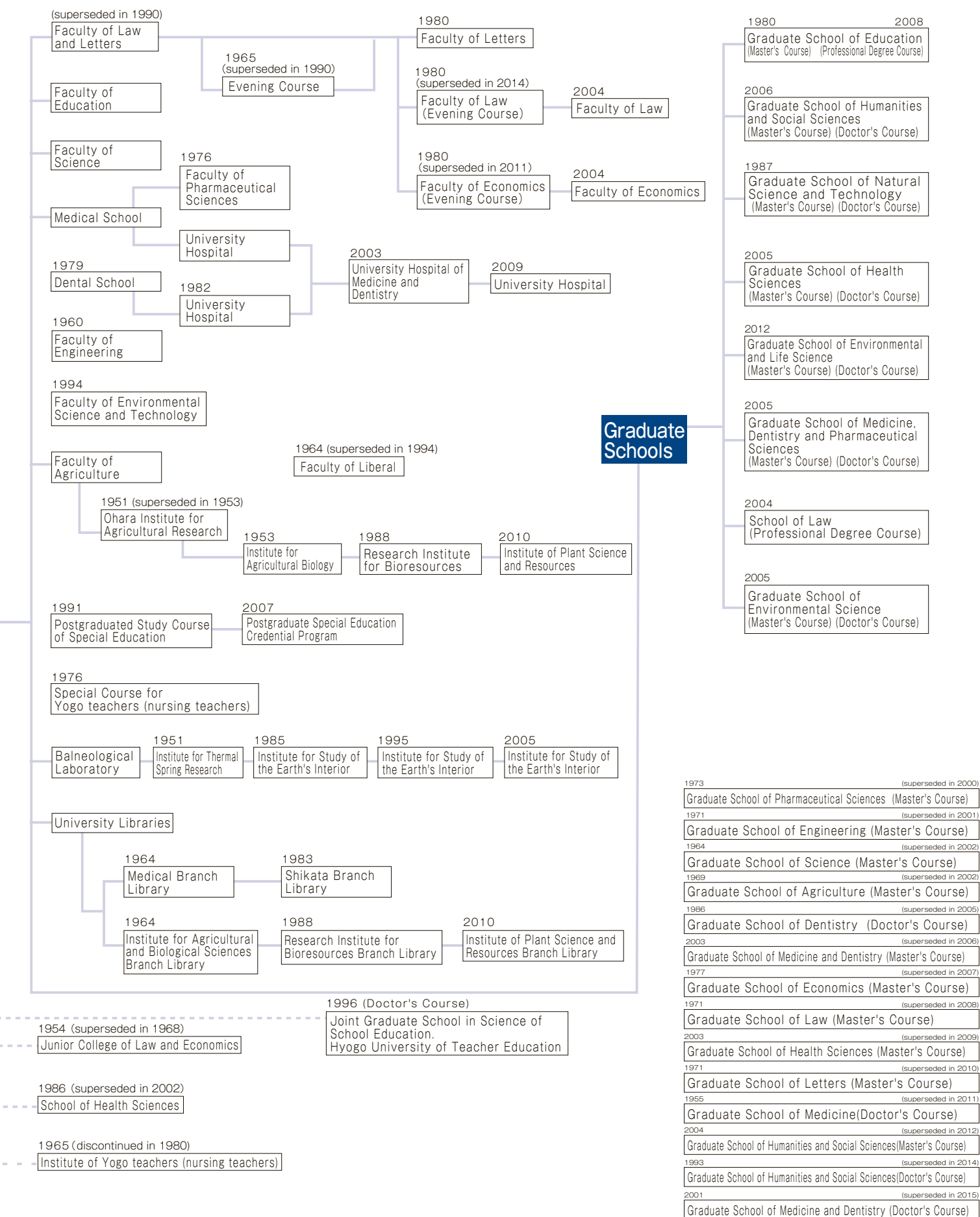
1949
(superseded in 1951)
Okayama Agricultural College

1914
Ohara Institute for Agricultural Research

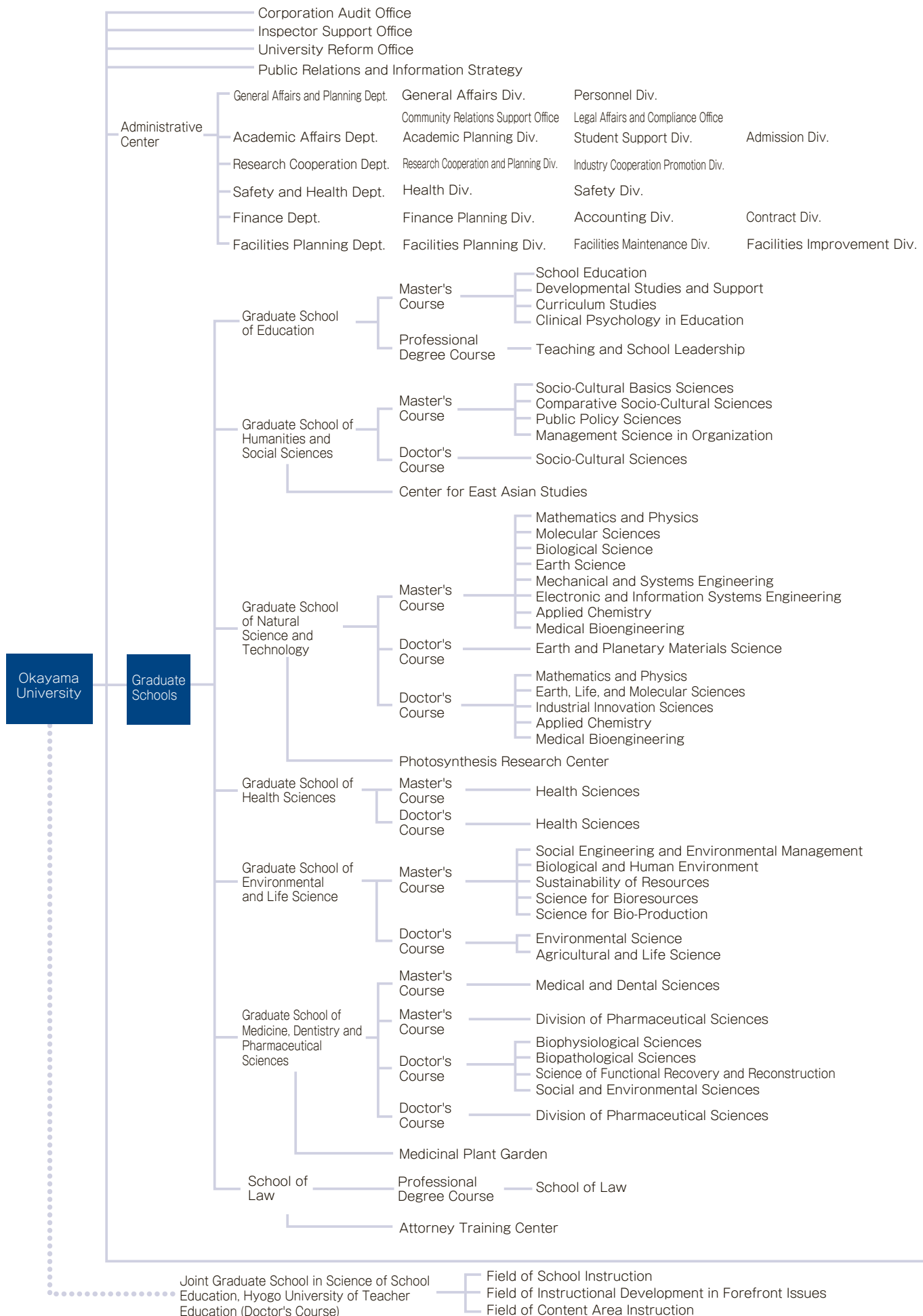
1929
Ohara Institute for Agricultural Research

1939
Misasa Hot Spring Rehabilitation Center

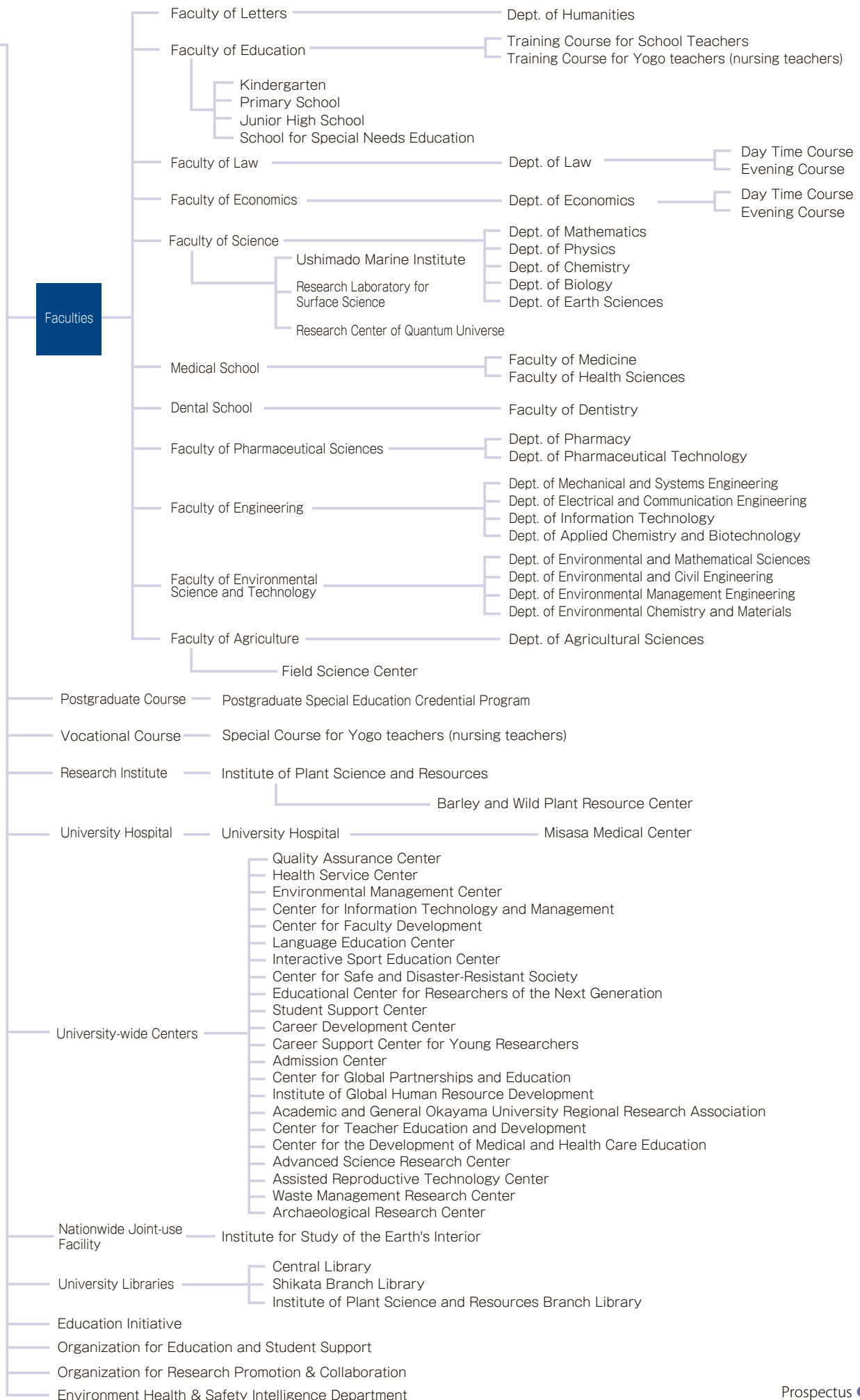
1943
Research Center for Radio-Balneology



Organization Chart



Faculties



As of May 1, 2015

Classification	President	Directors	Inspector	Inspector (Non-executive)	Total
Executives	1	7	1	1	10

Classification	Professors	Associate Professors	Senior Assistant Professors	Assistant Professors	Research Associates	Teachers	Sub Total	Clerical Employees Technical Employees	Grand Total
Administrative Center ¹				[1]			[1]	202 [31] (1)	202 [32] (1)
Graduate School of Education	57	38	14	4			113	16 [3]	129 [3]
Graduate School of Humanities and Social Sciences	69	54 [3]		2 [1]	1		126 [4]	23	149 [4]
Center for East Asian Studies		1					1		1
Graduate School of Natural Science and Technology	93 [2]	78 [1]	13 [5]	56 [23]	2 [1]		242 [32]	46 [10]	288 [42]
Photosynthesis Research Center		0 [1]		1			1 [1]		1 [1]
Graduate School of Health Sciences	23	15	2	19	1		60		60
Graduate School of Environmental and Life Science	56 [1]	45	2	14 [9]	1		118 [10]	0 [1]	118 [11]
Graduate School of Medicine, Dentistry and Pharmaceutical Sciences	75 [9]	54 [5]	14 [7]	121 [27]	2		266 [48]	46 [80]	312 [128]
School of Law	13	4		1			18	0 [1]	18 [1]
Attorney Training Center							0	0 [1]	0 [1]
Faculty of Education							0		0
Attached Schools						104 [1]	104 [1]	7	111 [1]
Faculty of Science							0	5 [1]	5 [1]
Marine Laboratory				0 [2]			0 [2]	1 [1]	1 [3]
Research Center of Quantum Universe	0 [1]						0 [1]		0 [1]
Medical School							0	18 [3]	18 [3]
Dental School							0	1	1
Faculty of Pharmaceutical Sciences							0	3	3
Faculty of Engineering							0	20	20
Faculty of Environmental Science and Technology							0	3	3
Faculty of Agriculture							0		0
Field Science Center							0	6 [2]	6 [2]
Institute of Plant Science and Resources	6	6		8 [8]			20 [8]	12	32 [8]
Barley and Wild Plant Resources Center	4	3		7 [2]			14 [2]	3 [1]	17 [3]
University Hospital	19 [2]	11	52 [2]	113 [66]			195 [70]	754 [875]	949 [945]
Misasa Medical Center			1				1	18	19
Health Service Center	2	2	1	0 [1]			5 [1]	5	10 [1]
Environmental Management Center	1	3		2			6		6
Center for Information Technology and Management	2	2					4	9	13
Center for Faculty Development	2	3		1			6	0 [1]	6 [1]

Classification	Professors	Associate Professors	Senior Assistant Professors	Assistant Professors	Research Associates	Teachers	Sub Total	Clerical Employees Technical Employees	Grand Total
Language Education Center	11	14	0 [6]				25 [6]	0 [2]	25 [8]
Interactive Sport Education Center	1			1			2	0 [1]	2 [1]
Center for Safe and Disaster-Resistant Society							0	0 [1]	0 [1]
Student Support Center		3	0 [1]	0 [1]			3 [2]		3 [2]
Career Development Center	1	1		1 [1]			3 [1]	0 [1]	3 [2]
Career Support Center for Young Researchers	1	0 [1]		0 [4]			1 [5]		1 [5]
Admission Center	2	1 [1]					3 [1]	0 [1]	3 [2]
Center for Global Partnerships and Education	1 [1]	0 [3]	0 [3]				1 [7]	14 [12]	15 [19]
Institute of Global Human Resource Development	1	1					2		2
Academic and General Okayama University Regional Research Association	1	1 [2]		0 [4]			2 [6]		2 [6]
Center for Teacher Education and Development	2	1	1	0 [1]			4 [1]	0 [2]	4 [3]
Center for the Development of Medical and Health Care Education	0 [2]	1		4 [2]			5 [4]	0 [2]	5 [6]
Advanced Science Research Center	3	2		3 [4]	1		9 [4]	9 [9] (1)	18 [13] (1)
Assisted Reproductive Technology Center				0 [2]			0 [2]		0 [2]
Solid Waste Management Research Center	1	2		1			4		4
Archaeological Research Center	1			4			5	0 [1]	5 [1]
Institute for Study of the Earth's Interior	3	11 [1]		1 [2]	0 [1]		15 [4]	5 [5]	20 [9]
University Libraries							0	22 [1]	22 [1]
Education Initiative		2		1			3	0 [1]	3 [1]
Organization for Research Promotion & Collaboration	2 [1]	2					4 [1]	0 [11]	4 [12]
Environment Health & Safety Intelligence Department	1						1	0 (1)	1 (1)
Support Unit for Strategic Programs							0	0 [16]	0 [16]
Research Core for Interdisciplinary Sciences		4		0 [1]			4 [1]	0 [5]	4 [6]
Research Core for Extreme Quantum World	1 [1]	1		0 [3]			2 [4]	0 [1]	2 [5]
Research Center of New Functional Materials for Energy Production, Storage, and Transport		1					1		1
Grand Total	455 [20]	367 [18]	100 [24]	365 [165]	8 [2]	104 [1]	1,399 [230]	1,248 [1,083] (3)	2,647 [1,313] (3)

Note : Square Brackets, "[]", indicate Contracted Staff (Full time).

Brackets, "()", indicate Rehired Working Staff (Full time).

Note 1: The Administrative Center includes the Corporation Audit office, the University Reform Office, and the Public Relations and Information Strategy.

1 Students

As of May 1, 2015

Classification	Annual Capacity of Admission	Total Capacity	Admitted					
			1st year	2nd year	3rd year	4th year	5th year	Total
Graduate School of Education(Master's Course)								
School Education	6	12	5	7				12
Developmental Studies and Support	9	18	11	7				18
Curriculum Studies	47	94	39	49				88
Clinical Psychology in Education	8	16	8	8				16
Sub Total	70	140	63	71				134
Graduate School of Humanities and Social Sciences (Master's Course)								
Socio-Cultural Basics Sciences	27	54	18	27				45
Comparative Socio-Cultural Sciences	40	80	42	30				72
Public Policy Sciences	19	38	6	14				20
Management Science in Organization	14	28	17	22				39
Sub Total	100	200	83	93				176
Graduate School of Natural Science and Technology (Master's Course)								
Mathematics and Physics	38	76	27	37				64
Molecular Sciences	24	48	28	26				54
Biological Science	22	44	21	19				40
Earth Science	16	32	13	11				24
Mechanical and Systems Engineering	98	209	111	123				234
Electronic and Information Systems Engineering	90	194	103	128				231
Applied Chemistry	50	50	58					58
Medical Bioengineering	57	57	54					54
Chemistry and Biotechnology		80	3	87				90
Chemical and Biological Technology				1				1
Sub Total	395	790	418	432				850
Graduate School of Health Sciences (Master's Course)								
Health Sciences	26	52	27	34				61
Sub Total	26	52	27	34				61
Graduate School of Environmental and Life Science (Master's Course)								
Social Engineering and Environmental Management	30	60	26	28				54
Biological and Human Environment	23	46	23	24				47
Sustainability of Resources	43	86	37	39				76
Science for Bioresources	25	50	27	23				50
Science for Bio-Production	38	76	27	29				56
Sub Total	159	318	140	143				283
Graduate School of Medicine, Dentistry and Pharmaceutical Sciences (Master's Course)								
Medical and Dental Sciences	20	40	29	25				54
Sub Total	20	40	29	25				54
Graduate School of Medicine, Dentistry and Pharmaceutical Sciences (Master's Course)								
Division of Pharmaceutical Sciences	40	80	38	32				70
Sub Total	40	80	38	32				70
Graduate School of Environmental Science (Master's Course)								
Biological and Human Environment				1				1
Sub Total				1				1
Total (Master's Course)	810	1,620	798	831				1,629
Graduate School of Humanities and Social Sciences (Doctor's Course)								
Socio-Cultural Sciences	12	36	14	12	34			60
Sub Total	12	36	14	12	34			60
Graduate School of Natural Science and Technology (Doctor's Course)								
Earth and Planetary Materials Science	4	20		6	1	3	3	13
Sub Total	4	20		6	1	3	3	13

Classification	Annual Capacity of Admission	Total Capacity	Admitted					
			1st year	2nd year	3rd year	4th year	5th year	Total
Graduate School of Natural Science and Technology (Doctor's Course)								
Mathematics and Physics	10	30	6	4	2			12
Earth, Life, and Molecular Sciences	17	51	8	7	14			29
Industrial Innovation Sciences	21	71	15	20	30			65
Applied Chemistry	7	7	4					4
Medical Bioengineering	10	10	13					13
Chemistry and Biotechnology		26	2	10	10			22
Frontier and Fundamental Sciences					2			2
Chemistry and Biochemistry					7			7
Bioscience					2			2
Sub Total	65	195	48	41	67			156
Graduate School of Health Sciences (Doctor's Course)								
Health Sciences	10	30	14	8	46			68
Sub Total	10	30	14	8	46			68
Graduate School of Environmental and Life Science (Doctor's Course)								
Environmental Science	22	66	24	17	19			60
Agricultural and Life Science	20	60	28	11	19			58
Sub Total	42	126	52	28	38			118
Graduate School of Medicine, Dentistry and Pharmaceutical Sciences (Doctor's Course)								
Biophysiological Sciences	25	100	31	25	20	66		142
Biopathological Sciences	62	248	77	72	68	160		377
Science of Functional Recovery and Reconstruction	28	112	57	37	35	58		187
Social and Environmental Sciences	13	52	13	18	13	18		62
Sub Total	128	512	178	152	136	302		768
Graduate School of Medicine, Dentistry and Pharmaceutical Sciences (Doctor's Course)								
Division of Pharmaceutical Sciences	10	30	9	8	8			25
Pharmaceutical Sciences					3			3
Sub Total	10	30	9	8	11			28
Graduate School of Environmental Science (Doctor's Course)								
Social Engineering and Environmental Management					3			3
Biological and Human Environment					2			2
Sub Total					5			5
Total (Doctor's Course)	271	949	315	255	338	305	3	1,216
Graduate School of Education (Professional Degree Course)								
Teaching and School Leadership	20	40	24	19				43
School of Law (Professional Degree Course)								
School of Law	30	120	20	16	25			61
Total (Professional Degree Course)	50	160	44	35	25			104
Grand Total	1,131	2,729	1,157	1,121	363	305	3	2,949
Joint Graduate School in Science of School Education, Hyogo University of Teacher Education (Doctor's Course) ¹								
Field of School Instruction	6	18	1	1	6			8
Field of Instructional Development in Forefront Issues	4	12	2		4			6
Field of Content Area Instruction	14	42	5	4	9			18
Sub Total	24	72	8	5	19			32

Note 1: "Joint Graduate School in Science of School Education, Hyogo University of Teacher Education" refers to students from Okayama University.

2 Profile of Applicants and Entrants

■ Master's Course

Fiscal Year 2015

Classification	Annual Capacity of Admission	Applicants		Entrants	
		Male	Female	Male	Female
Graduate School of Education	70	2015, 47	47	27	35
		2014, 10			
Graduate School of Humanities and Social Sciences	100	2015, 59	60	41	39
		2014, 10	2		2
Graduate School of Natural Science and Technology	395	2015, 439	67	365	46
		2014, 10	4	2	
Graduate School of Health Sciences	26	2015, 8	32	6	20
Graduate School of Environmental and Life Science	159	2015, 109	58	90	46
		2014, 1	2	1	2
Graduate School of Medicine, Dentistry and Pharmaceutical Sciences	60	2015, 47	38	34	31
		2014, 10			
Total	810	714	306	566	221
		1,020		787	

■ Doctor's Course

Classification	Annual Capacity of Admission	Applicants		Entrants	
		Male	Female	Male	Female
Graduate School of Humanities and Social Sciences	12	2015, 13	8	8	6
		2014, 10	1		1
Graduate School of Natural Science and Technology	69	2015, 29	6	29	6
		2014, 10	6	6	5
Graduate School of Health Sciences	10	2015, 5	9	5	8
Graduate School of Environmental and Life Science	42	2015, 16	7	16	7
		2014, 10	20	19	10
Graduate School of Medicine, Dentistry and Pharmaceutical Sciences	138	2015, 111	56	106	52
		2014, 1	9	1	7
Total	271	201	111	190	102
		312		292	
Joint Graduate School in Science of School Education, Hyogo University of Teacher Education	24	6	6	3	5

Note: The number in the column of the "Joint Graduate School in Science of School Education, Hyogo University of Teacher Education" represents students from Okayama University.

■ Professional Degree Course

Classification	Annual Capacity of Admission	Applicants		Entrants	
		Male	Female	Male	Female
Graduate School of Education	20	16	11	13	11
School of Law	30	45	16	13	4

3 Employment Status of Graduates

As of May 1, 2015

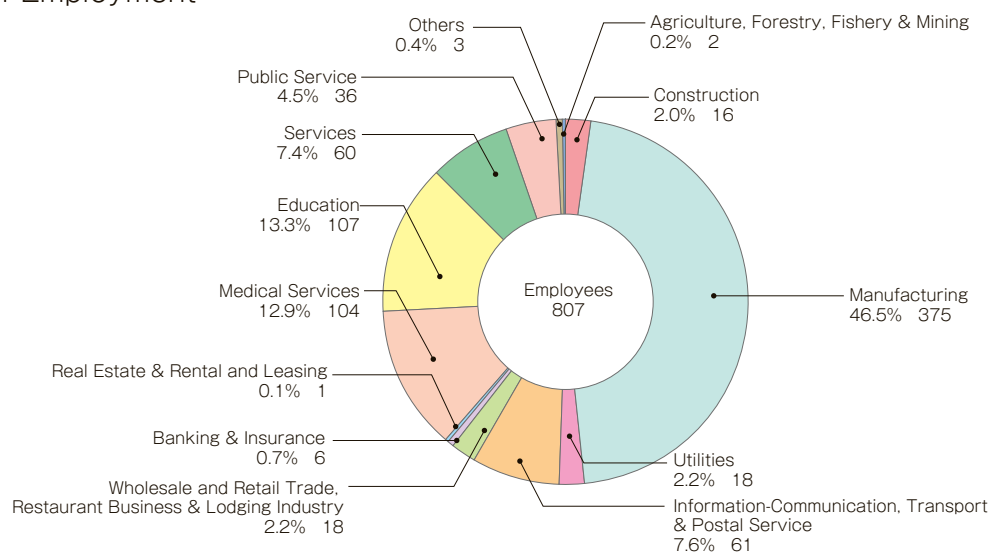
Classification	Graduates	Advanced to Graduate Schools	Employees	Types of Employment																
				Agriculture, Forestry, Fishery & Mining	Construction	Manufacturing	Utilities	Information-Communication, Transport & Postal Service	Wholesale and Retail Trade, Restaurant Business & Lodging Industry	Banking & Insurance	Real Estate & Rental and Leasing	Medical Services	Education				Services	National Public Service	Local Public Service	Others
													Elementary School	Junior High School	Senior High School	Kindergarten				
■ Master's Course																				
Graduate School of Humanities and Social Sciences	65 (30)	6 (2)	35 (12)		1 (3)	4 (3)		3 (1)	3 (1)	1	1	1			2 (2)	2 (2)	6 (2)	1 (1)	8 (1)	2
Graduate School of Education	63 (35)	4 (3)	41 (23)		1 (1)	1			3 (1)	1 (1)		3 (3)	8 (5)	5 (2)	8 (1)	1 (1)	5 (4)	1 (1)	3 (3)	
Graduate School of Natural Science and Technology	405 (41)	20 (4)	377 (34)		4	276 (22)	16	42 (7)	3	2 (1)		3 (1)			7		3 (3)	15 (3)	4	1
Graduate School of Health Sciences	22 (18)	1 (1)	18 (14)			1 (1)						17 (13)								
Graduate School of Environmental and life Science	155 (49)	11 (4)	126 (35)	2 (1)	9 (2)	51 (12)	2	13 (5)	7 (2)	2 (2)					2	3 (2)	21 (5)		14 (4)	
Graduate School of Environmental Science																				
Graduate School of Medicine, Dentistry and Pharmaceutical Sciences	53 (24)	12 (8)	36 (14)			24 (6)		1 (1)	1			3 (2)				2 (2)	5 (3)			
■ Doctor's Course																				
Graduate School of Humanities and Social Sciences	10 (5)		1 (1)													1 (1)				
Graduate School of Humanities and Social Sciences	48 (13)		30 (3)			11		2								11 (2)	6 (1)			
Graduate School of Natural Science and Technology	1 (1)		1 (1)														1 (1)			
Graduate School of Health Sciences	11 (7)		11 (7)									5 (1)				6 (6)				
Graduate School of Environmental Science	8 (2)		6 (1)			1			1							1 (1)	2 (1)		1	
Graduate School of Environmental and Life Science	17 (5)		13 (4)		1	4 (2)										6 (1)	1 (1)	1 (1)		
Graduate School of Medicine and Dentistry	8 (3)																			
Graduate School of Medicine, Dentistry and Pharmaceutical Sciences	108 (35)		90 (25)			2						72 (23)				13 (2)	2		1	
■ Professional Degree Course																				
Graduate School of Education	23 (8)		21 (8)										13 (4)	3 (2)	3 (1)	2 (1)				
School of Law	22 (7)		1																1	
Total	1,019 (283)	54 (22)	807 (182)	2 (1)	16 (3)	375 (46)	18	61 (14)	18 (4)	6 (4)	1	104 (43)	21 (9)	8 (4)	22 (4)	1 (1)	55 (23)	60 (16)	4 (2)	32 (8)
■ Doctor's Course																				
Joint Graduate School in Science of School Education, Hyogo University of Teacher Education ¹	4 (2)		4 (2)										1 (1)		1	1 (1)				1

Note : Brackets, "()", indicate female students.

Note : "Graduates" includes students who stayed in graduate school longer than the standard term of study and withdrew from the school with the required credits.

Note 1: "Joint Graduate School in Science of School Education, Hyogo University of Teacher Education" means students of Okayama University.

■ Types of Employment



4 Scholarship Recipients (Excluding freshmen)

As of May 1, 2015

Classification	Japan Student Services Organization		Local Public Bodies, etc.	Total
	Scholarship I (Loan with no Interest)	Scholarship II (Loan with Interest)		
■ Master's Course				
Graduate School of Education	23	1	1	25
Graduate School of Humanities and Social Sciences	8			8
Graduate School of Natural Science and Technology	240	42	1	283
Graduate School of Health Sciences	3	2		5
Graduate School of Environmental Science				
Graduate School of Environmental and Life Science	76	6		82
Graduate School of Medicine, Dentistry and Pharmaceutical Sciences	23	3		26
■ Doctor's Course				
Graduate School of Humanities and Social Sciences	2			2
Graduate School of Natural Science and Technology	15	1		16
Graduate School of Health Sciences	1	2		3
Graduate School of Environmental Science				
Graduate School of Environmental and Life Science	8			8
Graduate School of Medicine, Dentistry and Pharmaceutical Sciences	54	1	1	56
■ Professional Degree Course				
School of Law	14	2	4	20
Total	467	60	7	534

5 Degrees Conferred

As of March 25, 2015

Classification	Master's Degrees	Doctor's Degrees		Professional Degrees	Doctor's Degrees in Old System
		Course Doctorate	Dissertation Doctorate		
Cultural Sciences	27	12	2		
Public Policy	29				
Philosophy	118	614	80		
Letters	1,173	75	6		
Education	2,082				
Law	411	18	5		
Economics	357	34	2		
Business Administration	109				
Science	2,884	321	60		
Medicine		2,396	3,811		2,461
Medical Science	217				
Nursing	124	6			
Health Science	184	51	3		
Dentistry		495	92		
Dental Science	31				
Pharmaceutical Sciences	1,566	267	138		
Pharmaceutical Sciences	145	2			
Engineering	7,640	543	146		
Environmental Science and Technology	484	13	2		
Environmental Science	836	80	2		
Agriculture	2,397	258	97		
Master of Education				126	
Juris Doctor				318	
Total	20,814	5,185	4,446	444	2,461

Postgraduate Course, Vocational Course

1 Students

As of May 1, 2015

Classification	Annual Capacity of Admission	Admitted
Postgraduate Special Education Credential Program	15	7
Special Course for Yogo teachers (nursing teachers)	40	43

2 Employment Situation of Graduates

Fiscal Year 2014

Classification	Graduates	Advanced	Employed			Others
			Private Companies	School Teachers	Public Officials	
Postgraduate Special Education Credential Program	9		2	6		1
Special Course for Yogo teachers (nursing teachers)	35	2	6	13	2	12

1 Departments, Courses and Subjects

As of May 1, 2015

■ Faculty of Letters (1 Department 5 Subjects)

Department of Humanities
Philosophy and Arts
Behavioral Sciences
History
Asian Language and Culture
Euro-American Language and Culture

■ Faculty of Education (2 Courses 15 Subjects)

Training Course for School Teachers
Japanese Language Education
Social Studies Education
Mathematics Education
Science Education
Training Course for Yogo teachers (nursing teachers)
Music Education
Fine Arts Education
Health and Physical Education
Home Economics Education
Technology Education
English Language Education
Special Education
Education for Infants
Education of School Health Care
School Education
Educational Psychology

■ Faculty of Law (1 Department 4 Subjects)

Department of Law (including Evening Course)
Public Law
Civil Law
International and Comparative Law
Modern Politics

■ Faculty of Economics (1 Department 4 Subjects)

Department of Economics (including Evening Course)
Economic Theory and Statistics
Comparative Economics
Socio-economic Planning and Policy Science
Management and Accounting

■ Faculty of Science (5 Departments 5 Subjects)

Department of Mathematics
Mathematics
Department of Physics
Physics
Department of Chemistry
Chemistry
Department of Biology
Biology
Department of Earth Sciences
Earth Sciences

■ Medical School (2 Faculties 20 Subjects)

Faculty of Medicine
Human Biology
Cardiovascular Pathophysiology
Anesthesiology and Emergency Medicine
Basic and Clinical Neuroscience
Basic and Clinical Pathophysiology

Mother and Child Medicine
Basic Oncology
Laboratory Medicine
Sensory and Locomotory Function Medicine
Legal Medicine and Bioethics
Infection and Immunity
Social Medicine and Environmental Health Sciences

Faculty of Health Sciences

Human Nursing
Adult Health Nursing
Maternal and Child Health Nursing
Community Health Nursing
Medical Radioscience
Medical Radiotechnology
Clinical Pathology
Clinical Biology

■ Dental School (1 Department 5 Subjects)

Faculty of Dentistry
Oral Biology
Oral Pathobiology
Oral and Maxillofacial Surgery and Diagnostic Medicine
Oral Functional Reconstruction
Oral Health, Growth and Development

■ Faculty of Pharmaceutical Sciences

(2 Departments 2 Subjects)
Department of Pharmacy
Clinical Pharmaceutical Science
Department of Pharmaceutical Technology
Medicine Development Science

■ Faculty of Engineering (4 Departments 4 Subjects)

Department of Mechanical and Systems Engineering
Mechanical and Systems Engineering
Department of Electrical and Communication Engineering
Electrical and Communication Engineering
Department of Information Technology
Information Technology
Department of Applied Chemistry and Biotechnology
Applied Chemistry and Biotechnology

■ Faculty of Environmental Science and Technology (4 Departments 4 Subjects)

Department of Environmental and Mathematical Sciences
Environmental and Mathematical Sciences
Department of Environmental and Civil Engineering
Environmental and Civil Engineering
Department of Environmental Management Engineering
Environmental Management Engineering
Department of Environmental Chemistry and Materials
Environmental Chemistry and Materials

■ Faculty of Agriculture (1 Department 4 Subjects)

Department of Agricultural Sciences
Course of Agrochemical Bioscience
Course of Applied Plant Science
Course of Applied Animal Science
Course of Environmental Ecology

■ Matching Program Course

The Matching Program Course is designed so that students create own their program matching their individual career interests and goals with their studies. Each student decides an area of interest and investigates it. Choices can extend beyond existing curriculums offered by faculties and departments. The goal is to develop each students' character as well as academic ability. A bachelor's degree in "Philosophy" is awarded to students who complete the Matching Program Course.

2 Students

As of May 1, 2015

Departments or Courses	Annual Capacity of Admission	Total Capacity	Admitted							Total
			1st year	2nd year	3rd year	4th year	5th year	6th year		
Faculty of Letters										
Humanities	175	700	189	186	189	223				787
Sub Total	175	700	189	186	189	223				787
Faculty of Education										
Training Course for School Teachers	250	1,000	260	265	261	298				1,084
Training Course for Yogo teachers (nursing teachers)	30	120	30	31	32	32				125
Sub Total	280	1,120	290	296	293	330				1,209
Faculty of Law										
Law (Day Time Course)	205	820	208	211	207	252				878
Law (Evening Course)	20	80	23	20	25	35				103
Sub Total	225	900	231	231	232	287				981
Faculty of Economics										
Economics (Day Time Course)	205	820	218	210	206	257				891
Economics (Evening Course)	40	160	43	42	36	59				180
Sub Total	245	980	261	252	242	316				1,071
Faculty of Science										
Mathematics	20	80	23	20	32	25				100
Physics	35	140	36	38	53	39				166
Chemistry	30	120	32	32	48	34				146
Biology	30	120	30	33	38	37				138
Earth Sciences	25	100	26	25	31	32				114
Sub Total	140 <20>	560 <40>	147	148	202	167				664
Medical School										
Faculty of Medicine	115 [5]	687 [25]	117	123	128	116	121	116		721
Faculty of Health Sciences	160 <20>	640 <40>	171	175	169	178				693
Sub Total	275 [5] <20>	1,327 [25] <40>	288	298	297	294	121	116		1,414
Dental School										
Faculty of Dentistry	48 <5>	295 <20>	49	48	56	46	57	56		312
Sub Total	48 <5>	295 <20>	49	48	56	46	57	56		312
Faculty of Pharmaceutical Sciences										
Pharmacy	40	240	42	39	44	39	38	43		245
Pharmaceutical Technology	40	160	43	44	41	41				169
Sub Total	80	400	85	83	85	80	38	43		414
Faculty of Engineering										
Department of Mechanical and Systems Engineering	160	640	165	182	202	170				719
Department of Electrical and Communication Engineering	100	400	107	121	114	126				468
Department of Information Technology	60	240	61	72	69	63				265
Department of Applied Chemistry and Biotechnology	140	560	145	161	160	168				634
Mechanical Engineering					2	4				6
Applied Chemistry					1	4				5
Electrical and Electronic Engineering				4	4	4				12
Information Technology				1	3	2				6
Bioscience and Biotechnology					2	4				6
Systems Engineering				1	3	5				9
Communication Network Engineering					7	1				8
Sub Total	460 <30>	1,840 <60>	478	542	567	551				2,138
Faculty of Environmental Science and Technology										
Environmental and Mathematical Sciences	20	80	24	19	26	20				89
Environmental and Civil Engineering	50	200	51	52	63	59				225
Environmental Management Engineering	40	160	40	43	42	48				173
Environmental Chemistry and Materials	40	160	41	44	50	38				173
Sub Total	150	600	156	158	181	165				660
Faculty of Agriculture										
Agricultural Sciences	120	480	129	121	132	134				516
Sub Total	120	480	129	121	132	134				516
Matching Program Course			20	17	18	19				74
			20	17	18	19				74
Total	2,198 [5] <75>	9,202 [25] <160>	2,323	2,380	2,494	2,612	216	215		10,240

Note : Square Brackets, "[]", show the capacity of special admission in the second year.

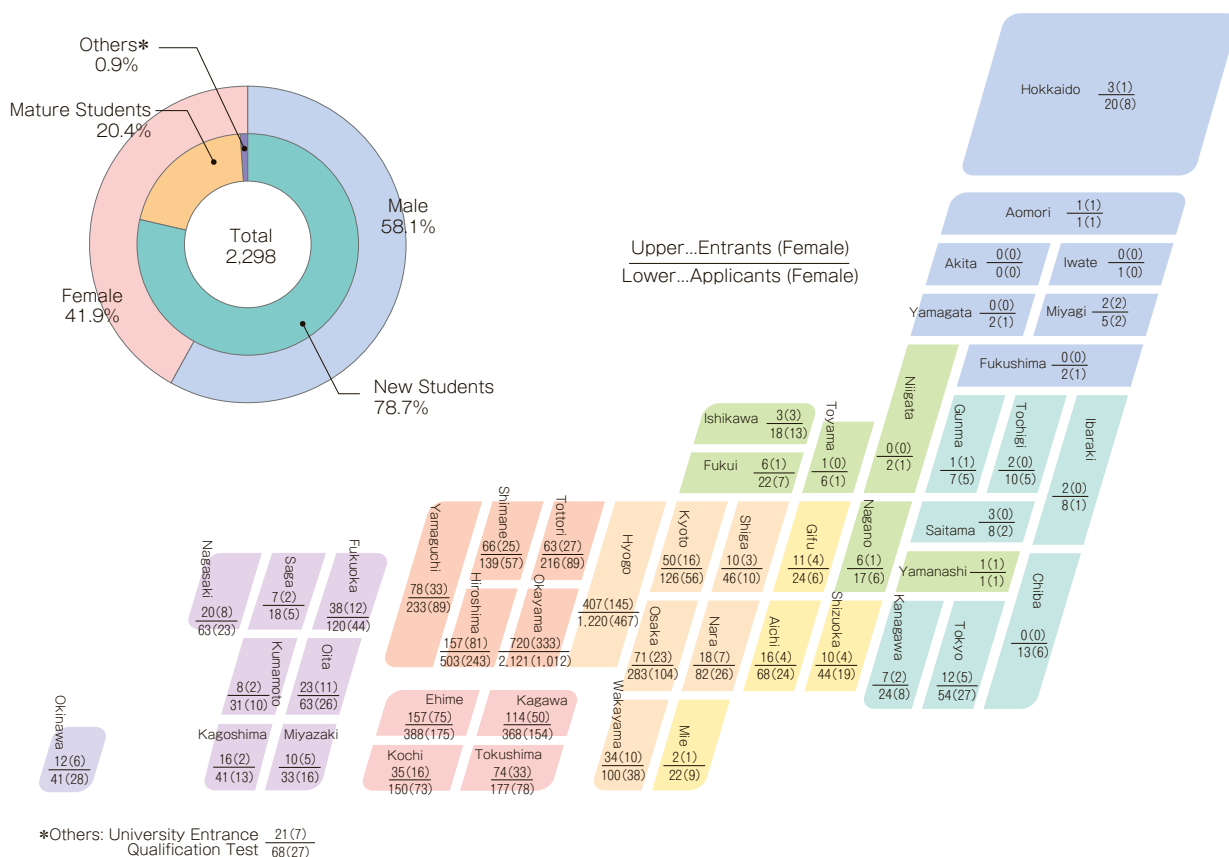
Note : Brackets, "()", show the capacity of special admission in the third year.

3 Profile of Applicants and Entrants

Fiscal Year 2015

Classification	Annual Capacity of Admission	Applicants		Entrants		Entrant's Hometown	
		Male	Female	Male	Female	Okayama	Other
Faculty of Letters	175	167	485	41	147	38.3	61.7
Faculty of Education	280	227	414	105	185	44.1	55.9
Faculty of Law							
Dept. of Law	205	448	312	110	98	27.4	72.6
Dept. of Law (Evening Course)	20	54	41	11	11	59.1	40.9
Faculty of Economics							
Dept. of Economics	205	404	185	143	74	29.5	70.5
Dept. of Economics (Evening Course)	40	84	80	22	21	65.1	34.9
Faculty of Science	140	301	101	115	30	22.8	77.2
Medical School							
Faculty of Medicine	115	299	122	90	25	33.9	66.1
Faculty of Health Sciences	160	106	443	35	127	28.4	71.6
Dental School	48	128	124	24	24	37.5	62.5
Faculty of Pharmaceutical Sciences	80	146	194	42	43	23.5	76.5
Faculty of Engineering	460	1,066	196	414	64	28.7	71.3
Faculty of Environmental Science and Technology	150	354	102	120	34	22.1	77.9
Faculty of Agriculture	120	190	198	57	70	16.5	83.5
Matching Program Course		18	20	6	10	62.5	37.5
Total	2,198	3,992	3,017	1,335	963	31.3	68.7
			7,009		2,298		

Entrants vs. Applicants by Prefecture



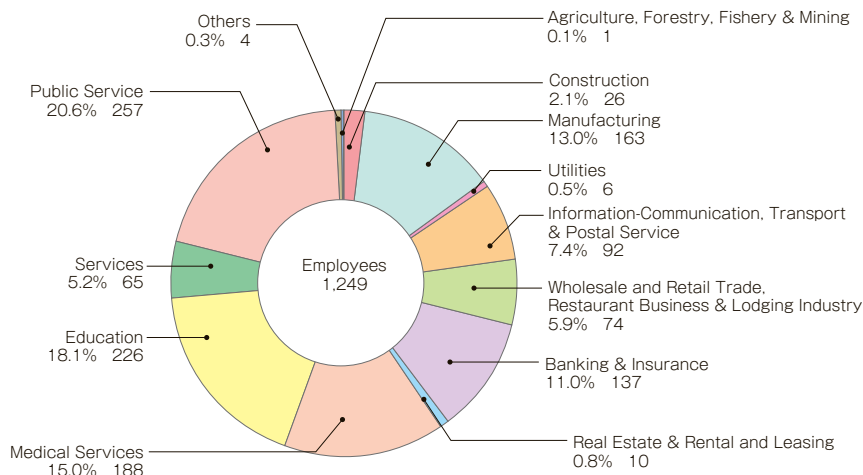
4 Employment Status of Graduates

As of May 1, 2015

Classification	Graduates	Advanced to Graduate Schools	Employees	Types of Employment																	
				Agriculture, Forestry, Fishery & Mining	Construction	Manufacturing	Utilities	Information-Communication, Transport & Postal Service	Wholesale and Retail Trade, Restaurant Business & Lodging Industry	Banking & Insurance	Real Estate & Rental and Leasing	Medical Services	Education				Services	National Public Service	Local Public Service	Others	
													Elementary School	Junior High School	Senior High School	Kindergarten					Others
Faculty of Letters	165 (119)	16 (9)	134 (98)		2 (2)	18 (12)		12 (8)	16 (12)	19 (15)	1 (1)	5 (4)		3 (2)	11 (9)		11 (7)	8 (4)	7 (4)	20 (17)	1 (1)
Faculty of Education	277 (188)	30 (13)	220 (157)		2 (2)	5 (4)		4 (3)	1 (1)	15 (13)	1 (1)	11 (11)	97 (71)	36 (18)	12 (7)	2 (2)	20 (15)	3 (2)		11 (7)	
Faculty of Law	204 (100)	22 (8)	156 (80)			13 (7)	1	10 (4)	8 (2)	22 (15)	3	3					8 (6)	9 (3)	27 (16)	50 (25)	2 (2)
Faculty of Law (Evening Course)	13 (3)	2	7 (3)			1		1 (1)	1	1 (1)	1							1 (1)		1	
Faculty of Economics	208 (63)	5 (1)	176 (53)		3	17 (3)	1	19 (7)	13 (4)	54 (24)	1	2 (1)					7 (1)	10 (3)	10 (2)	38 (7)	1 (1)
Faculty of Economics (Evening Course)	32 (18)	1 (1)	27 (14)			2			9 (5)	5 (3)	1	1 (1)					2 (2)	2		5 (3)	
Faculty of Science	143 (43)	92 (16)	44 (23)		1	4 (2)		7 (6)	7 (2)	3 (3)	1			3 (2)	8 (3)		2	3 (3)	1	4 (2)	
Medical School	278 (163)	22 (17)	145 (118)									144 (118)					1				
Dental School	49 (30)																				
Faculty of Pharmaceutical Sciences	79 (42)	38 (15)	36 (24)			8 (6)			9 (7)			16 (9)							2 (2)	1	
Faculty of Engineering	481 (68)	321 (36)	149 (30)	1	3	72 (13)	4	28 (5)	2 (1)	8 (2)		1 (1)						12 (4)	3 (2)	15 (2)	
Faculty of Environmental Science and Technology	151 (25)	69 (13)	77 (11)		13	6 (1)		3		1							1 (1)	8 (3)	11 (1)	34 (5)	
Faculty of Agriculture	130 (76)	55 (29)	70 (46)		2 (1)	17 (10)		6 (5)	6 (3)	7 (5)	1 (1)	3 (3)			1 (1)		1 (1)	9 (6)	2 (1)	15 (9)	
Matching Program Course	17 (9)	7 (3)	8 (5)					2 (1)	2 (1)	2 (2)		2 (1)									
Total	2,227 (947)	680 (161)	1,249 (662)	1	26 (5)	163 (58)	6	92 (40)	74 (38)	137 (83)	10 (3)	188 (149)	97 (71)	42 (22)	32 (20)	2 (2)	53 (33)	65 (29)	63 (28)	194 (77)	4 (4)

Note: Brackets, "()", indicates female students.

■ Types of Employment



5 Scholarship Recipients (Excluding freshmen)

As of May 1, 2015

Classification	Japan Student Services Organization		Local Public Bodies, etc.	Total
	Scholarship I (Loan with no Interest)	Scholarship II (Loan with Interest)		
Faculty of Letters	133	90	8	231
Faculty of Education	184	155	7	346
Faculty of Law				
Dept. of Law (Day Time Course)	124	138	13	275
Dept. of Law (Evening Course)	18	8	1	27
Faculty of Economics				
Dept. of Economics (Day Time Course)	137	143	3	283
Dept. of Economics (Evening Course)	40	20		60
Faculty of Science	88	106		194
Medical School	223	193	13	429
Dental School	34	27		61
Faculty of Pharmaceutical Sciences	73	65	8	146
Faculty of Engineering	309	326	12	647
Faculty of Environmental Science and Technology	99	89	5	193
Faculty of Agriculture	66	77	2	145
Matching Program Course	7	13		20
Total	1,535	1,450	72	3,057

■ Attached Schools

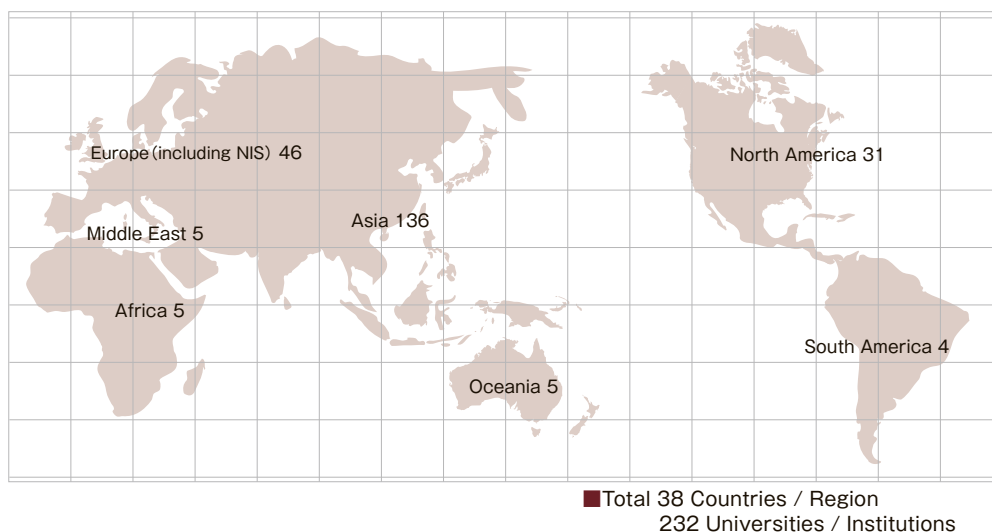
Children

As of May 1, 2015

Classification	Classes	Total Capacity	Current Children						
			1st Grade	2nd Grade	3rd Grade	4th Grade	5th Grade	6th Grade	Total
Primary School	18	636	105	103	103	102	105	103	621
Junior High School	15	580	180	200	200				580
School for Special Needs Education									
Primary	3	18	6		6		6		18
Junior	3	18	6	6	6				18
Senior	3	24	8	8	7				23
			(3-Year-Old)	(4-Year-Old)	(5-Year-Old)				
Kindergarten 3-Year Course	6	144	48	47	47				142

1 Distribution of International Partners

As of May 1, 2015



2 List of International Partners

Affiliated University	
Country/Region	Universities / Institutions
■ University Level	107
China	Northeast Normal University
China	Inner Mongolia Agricultural University
China	Zheng Zhou University
China	Beijing University of Aeronautics and Astronautics
China	Kunming Institute of Botany, Chinese Academy of Sciences
China	Dalian Polytechnic University
China	Liaoning University of Sciences and Technology
China	Tongji University
China	China Medical University
China	Harbin Medical University
China	Dalian Medical University
China	Jilin University
China	Beijing Information Science & Technology University
China	University of Shanghai for Science and Technology
China	Henan University of Science and Technology
China	InnerMongolia university
China	Capital Normal University
China	Changchun University of Science and Technology
China	Shaanxi Normal University
China	Harbin Engineering University
China	East China University of Political Science and Law
China	Yanbian University
China	Sun Yat-sen University
China	Jilin Huaqiao Foreign Languages Institute
China	Southern Medical University
China/Korea	Shanghai University of Traditional Chinese Medicine / Wonkwang University*
Indonesia	Bogor Agricultural University
Indonesia	Manado State University
Indonesia	Hasanuddin University
Indonesia	Gadjah Mada University
Indonesia	Andalas University
Korea	Gwangju Institute of Science and Technology
Korea	Sungkyunkwan University
Korea	Korea University
Mongolia	Mongolian State University of Agriculture
Mongolia	National University of Mongolia
Myanmar	Ministry of Health, Department of Medical Sciences and Department of Medical Research(Lower Myanmar)
Myanmar	Mandalay Technological University
Myanmar	Yangon Technological University
Thailand	Mahidol University
Thailand	Maejo University
Thailand	Kasetsart University
Thailand	Chulalongkorn University
Thailand	Prince of Songkla University
Malaysia	Universiti Teknologi Malaysia
Malaysia	University of Malaya
Malaysia	Universiti Putra Malaysia
Turkey	Karadeniz Technical University
Turkey	Ege University
Turkey	Turgut Ozal University
Turkey	Zirve University
Vietnam	University of Dalat
Vietnam	Hue University
Vietnam	Hanoi University of Technology

Affiliated University	
Country/Region	Universities / Institutions
Vietnam	Vietnam National University, Hanoi
Cambodia	National Institute of Education Cambodia
Cambodia	Royal University of Phnom Penh
Cambodia	Ministry of Labour and Vocational Training, Department of Occupational Safety and Health, Kingdom of Cambodia
Taiwan	National Taiwan University
Taiwan	National Taipei University of Technology
Taiwan	Kainan University
Taiwan	National Chung Hsing University
Taiwan	Fu Jen Catholic University
Australia	University of South Australia
Australia	University of Adelaide
Australia	University of Western Australia
France	Universite Pierre et Marie Curie
France	Universite de Strasbourg
France	Universite Bordeaux Montaigne
Germany	University of Hannover
Germany	Technische Universitat Dresden
Poland	Adam Mickiewicz University
Serbia	University of Novi Sad
Serbia	University of Belgrade
U.K.	University of Sheffield
U.K.	Cardiff University
U.K.	The University of Edinburgh
U.K.	University of East Anglia
U.K.	York St John University
U.K.	University of Surrey
Italy	Universita' Ca' Foscari Venezia
Spain	Universidad de Murcia
Canada	University of Alberta
Canada	Bishop's University
Canada	Carleton University
U.S.A.	San Jose State University
U.S.A.	California State University, East Bay
U.S.A.	The University of Kansas
U.S.A.	State University of New York at Stony Brook
U.S.A.	California State University, Fullerton
U.S.A.	University of Illinois at Urbana-Champaign
U.S.A.	Southern Oregon University
U.S.A.	The University of Maryland Baltimore
U.S.A.	Arizona State University
U.S.A.	University of Guam
U.S.A.	California State University, Monterey Bay
U.S.A.	University of Hawaii at Manoa
U.S.A.	University of Pittsburgh
U.S.A.	Chatham University (Chatham College for Women)
U.S.A.	Appalachian State University
U.S.A.	University of Northern Iowa
U.S.A.	Wayne State University
U.S.A.	Portland State University
Brazil	Universidade do Estado do Rio de Janeiro
Ghana	University of Ghana
Kenya	Jomo Kenyatta University of Agriculture and Technology
Egypt	Cairo University

Note : Asterisk, " * ", shows Tripartite Agreement.

Affiliated University	
Country/Region	Universities / Institutions
Faculty Level	125
Graduate School of Humanities and Social Sciences	
China	Institute of National Economy Shanghai Academy of Social Sciences
China	College of Economics, Zhejiang University
China	Department of Chinese Language and Literature Fudan University
China	School of Korean Studies, Shandong University
China	College of Law, National University of Kaohsiung
Taiwan	Graduate Institute of Asian Studies, Tamkang University
Taiwan	National Chiayi University College of Humanities and Arts
Taiwan	College of Law, National Chengchi University
Korea	Kookmin University, School of International & Area Social Sciences
Turkey	Canakkale Onsekiz Mart Universitesi, Sosyal Bilimler Enstitüsü
Germany	Faculties of History and Cultural Studies Freie Universität Berlin
Spain	Universidad de Salamanca
Graduate School of Natural Science and Technology	
China	College of Materials Science and Chemical Engineering, Zhejiang University
China	College of Life Sciences, Peking University
China	Xi'an Jiaotong University
China	Zhejiang University of Technology, College of Materials Science and Engineering
China	Shanghai Institute of Organic Chemistry, Chinese Academy of Sciences
China	Peking University Health Science Center
China	School of Mathematical Sciences, Fudan University
China	Dalian Institute of Chemical Physics, Chinese Academy of Sciences
China	Department of Chemistry, Renmin University of China
China	Department of Chemistry, Faculty of Science, The Chinese University of Hong Kong
China	Fujian Institute of Research on the Structure of Matter, Chinese Academy of Sciences
Korea	The College of Engineering and Sciences, Hanyang University
Taiwan	National Taiwan Normal University
Indonesia	Sepuluh Nopember Institute of Technology
Indonesia	Electronic Engineering Polytechnic Institute of Surabaya
Egypt	South Valley University
Egypt	Faculty of Science, El-Minufiya University
Spain	Universitat de Girona, Faculty of Sciences
Bulgaria	Faculty of Chemistry and Pharmacy, "St. Kl. Ohridski" University of Sofia, Bulgaria
Russia	Institute for Biomedical Problems, State Research Center of the Russian Federation
Czech	Faculty of Food and Biochemical Technology Institute of Chemical Technology, Prague
Denmark	Faculty of Science, University of Copenhagen
Germany	Faculty of Biology, University of Münster
U.S.A.	College of Science, Purdue University
Graduate School of Health Sciences	
Thailand	Srimahasarakham Nursing College
Graduate School of Environmental and Life Science	
Indonesia	Graduate School of Natural Resources and Environment Management, University of Sumatera Utara
Indonesia	Faculty of Civil and Environmental Engineering, Institute Technology Bandung
Vietnam	Hue University of Agriculture and Forestry
Vietnam	Institute of Environmental Science & Engineering Hanoi University of Civil Engineering
China	College of Forestry, Agricultural University of Hebei
China	College of Economics Management, College of Land Management Huazhong Agricultural University
Korea	Graduate School of Knowledge Based Technology and Energy, Korea Polytechnic University
Korea	Geologic Environment Division, Korea Institute of Geoscience and Mineral Resources
Poland	Faculty of Civil and Environmental Engineering, Gdansk University of Technology
Canada	Faculty of Forestry, the University of British Columbia
U.S.A.	International Arctic Research Center, University of Alaska, Fairbanks
Vietnam	Danang University of Technology
Vietnam	Research Institute for Biotechnology and Environment & Faculty of Animal Science and Veterinary Medicine, Nong Lam University
Thailand	Faculty of Science Burapha University
Finland	Faculty of International Technology, University of Jyväskylä
Graduate School of Medicine, Dentistry and Pharmaceutical Sciences	
Korea	Institute of Bio Convergence Technology, Dongguk University at Gyeongju
Thailand	Faculty of Medicine Khon Kaen University
Indonesia	Faculty of Medicine Udayana University
France	ÉCOLE des NEUROSCIENCES PARIS ÎLE-DE-FRANCE (ENP)
Italy	University of L'Aquila, Faculty of Medicine
U.S.A.	University of Michigan Medical School
Faculty of Letters	
China	School of Political Science and Public Administration (SPSPA) in Shandong University
Germany	Faculties of Humanities Ruhr-Universität Bochum
Faculty of Education	
Australia	University of Canberra
Faculty of Law	
China	Department of Law, Peking University

Affiliated University	
Country/Region	Universities / Institutions
U.K.	School of Politics and International Relations at the University of Kent, Canterbury
Faculty of Economics	
China	School of Economics, Central University of Finance and Economics
Korea	College of Business Administration, Kangwon National University
Rumania	Faculty of Business and Administration, University of Bucharest
Faculty of Science	
China	College of Chemistry and Molecular Engineering, Peking University
Korea	College of Natural Science, Dong-Eui University
Thailand	Faculty of Science, Chiang Mai University
India	School of Life Sciences, University of Hyderabad
Germany	Faculty of Chemistry, University of Konstanz
Poland	Cracow University of Technology
Russia	Faculty of Biology, Kazan State University
U.S.A.	College of Science, University of Notre Dame
Medical School	
China	Peking Union Medical College, Chinese Academy of Medical Sciences
China	Nanchang University Medical College
Korea	College of Medicine, Gyeongsang National University
Hungary	Debreceni Egyetem / University of Debrecen
Dental School	
China	Nanchang University Medical College
China	School of Stomatology, Peking University
China	College of Stomatology, Dalian Medical University
China	Faculty of Dentistry, University of Hong Kong
India	School of Dentistry (ABSM Institute of Dental Science), Nitte University
Indonesia	Faculty of Dentistry, University of Indonesia
Philippines	The School of Dentistry, Southwestern University
Vietnam	Faculty of Odonto-Stomatology Haiphong University of Medicine and Pharmacy
Vietnam	School of Odonto-Stomatology, Hanoi Medical University
Korea	College of Dentistry, Seoul National University
Taiwan	College of Oral Medicine, Taipei Medical University
Mongolia	School of Dentistry, Mongolian National Medical University
Australia	Charles Sturt University
U.K.	Dental School, University of Glasgow
Greece	The School of Dentistry, Aristotle University of Thessaloniki
Canada	College of Dentistry, University of Saskatchewan
U.S.A.	School of Dentistry, University of Washington
U.S.A.	School of Dentistry, Louisiana State University
Brazil	School of Dentistry, University of Sao Paulo
Brazil	Faculdade de Odontologia de Ribeirao Preto - Da Universidade de Sao Paulo
Chile	Faculty of Dentistry, University of Finis Terrae
Faculty of Pharmaceutical Sciences	
Korea	College of Pharmacy and Division of Life & Pharmaceutical Sciences, Ewha Womans University
Faculty of Engineering	
China	School of Mechanical Engineering, Shanghai Jiao Tong University
China	Medical College, Xiamen University
China	College of Chemistry, Sichuan University
Bangladesh	School of Science, Engineering & Technology, Khuina University
Finland	Tampere University of Technology
Finland	Tampere Polytechnic
Finland	VTT (Technical Research Center of Finland)
Portugal	Faculty of Engineering, University of Porto
Romania	Petru Poni" Institute of Macromolecular Chemistry, Institute of Excellence of the Romanian Academy
U.K.	Faculty of Science, Loughborough University
Italy	Faculty of Engineering, Roma Tre University
U.S.A.	School of Engineering, University of Missouri-Rolla
Faculty of Environmental Science and Technology	
Taiwan	School of Management, National Dong Hwa University
Canada	College of Engineering, University of Saskatchewan
Faculty of Agriculture	
China	College of Agriculture and Biotechnology, Zhejiang University
China	College of Bioengineering, Dalian University
Indonesia	Sam Ratulangi University
Indonesia	Faculty of Animal Husbandry, Udayana University
Indonesia	Faculty of Agriculture, University of Sriwijaya
Institute of Plant Science and Resources	
Korea	Bio-energy Research Institute, Chonnam National University
Russia	Institute for Biomedical Problems, State Research Center of the Russian Federation
Russia	Institute of Fundamental Medicine and Biology, Kazan Federal University
University Hospital	
China	Luoyang Central Hospital
Vietnam	Cardiovascular Center - E Hospital
Center for Global Partnerships and Education	
China	International Exchange and Cooperation Office, Qingdao University of Science & Technology

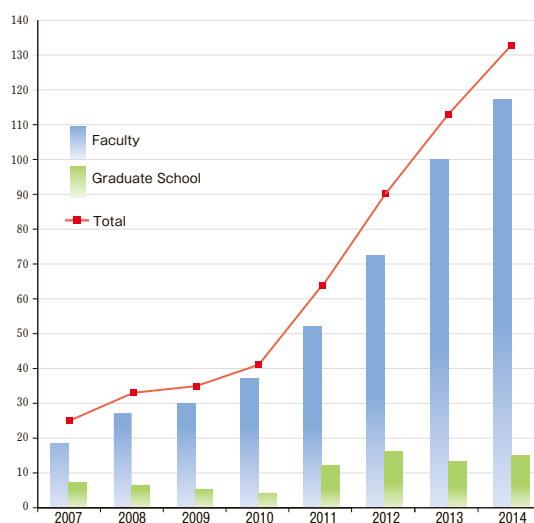
3 Japanese Students Studying Abroad

Countries / Durations

Fiscal Year 2015

Classification	within 6 months	6 months – 1 year	Total
Asia			
China		10	10
Korea	1	12	13
India	1		1
Thailand	6	3	9
Turkey	1		1
Sub Total	9	25	34
Oceania			
Australia	1	10	11
Sub Total	1	10	11
North America			
U.S.A.	5	37	42
Canada		2	2
Sub Total	5	39	44
Europe			
U.K.	1	10	11
Germany	8	11	19
France	3	9	12
Belgium		1	1
Denmark		1	1
Sub Total	12	32	44
Total	27	106	133

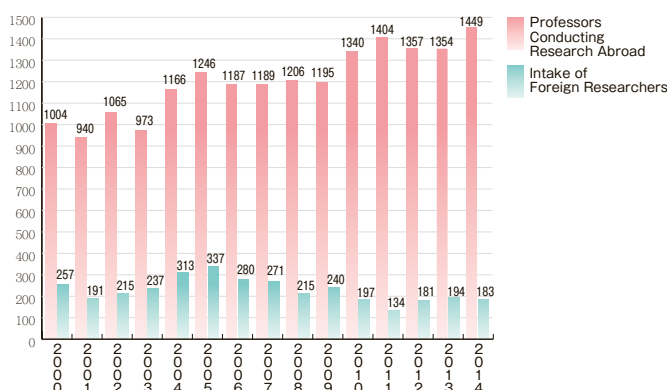
Students Studying Abroad



Note: The figures are based on the numbers notified to faculties and schools

4 Professors Conducting Research Abroad and the Intake of Foreign Researchers

Professors Conducting Research Abroad and Intake of Foreign Researchers

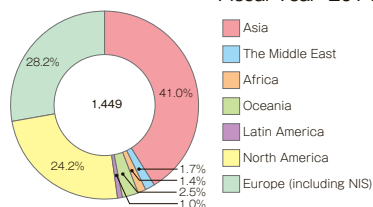


Regional Division of the Professors Conducting Research Abroad and the Intake of Foreign Researchers

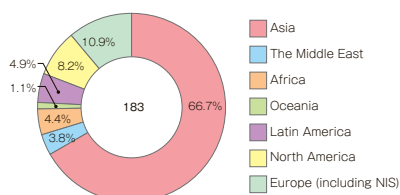
Classification	Professors Researching Abroad	Intake of Foreign Researchers
Asia		
China	158	59
Korea	92	14
Taiwan	71	4
Vietnam	62	20
Myanmar	41	5
Thailand	51	3
Others	123	17
Sub Total	598	122
The Middle East	25	7
Sub Total	25	7
Africa	20	8
Sub Total	20	8
Oceania		
Australia	35	2
Others	3	
Sub Total	38	2
Latin America	15	9
Sub Total	15	9
North America		
U.S.A.	307	13
Canada	46	2
Sub Total	353	15
Europe		
EU Members		
Germany	71	2
France	69	3
U.K.	50	5
Spain	37	1
Italy	29	1
Nederland	17	
Others	82	6
Non-EU Members		
Switzerland	18	
Czech	11	1
Others	16	1
Sub Total	400	20
Total	1,449	183

Regional Division of the Professors Conducting Research Abroad

Fiscal Year 2014

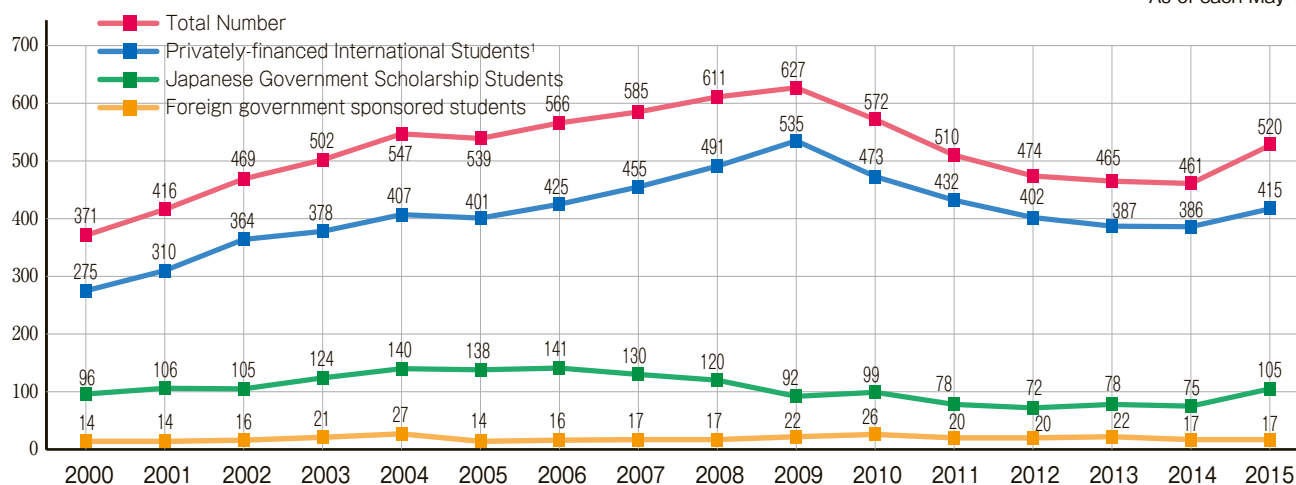


Regional Division of the Intake of Foreign Researchers



5 Trends in Number of International Students by Source of Funds

As of each May 1



Note: "International Students" includes students of the Joint Graduate School in Science of School Education, Hyogo University of Teacher Education.

Note 1: "Privately-financed international students" includes students sponsored by foreign governments.

6 International Students

Countries, Regions and Enrollments

As of May 1, 2015

Classification		Graduate Students		Undergraduate Students	Research Students, etc.	Total
		Doctor's Course	Master's Course			
Asia	China	69	99	31	87	286
	Korea	3	3	27	8	41
	Vietnam	22	13		1	36
	Malaysia	11		16		27
	Indonesia	13	4		1	18
	Bangladesh	11	1			12
	Thailand	1				1
	Myanmar	12			1	13
	India	2	2		2	6
	Taiwan	1		1	1	3
	Mongolia	2				2
	Philippines				1	1
	Sri Lanka			1		1
	Pakistan				1	1
	Cambodia		1			1
	Sub Total	147	123	76	103	449
The Middle East	Turkey	3	1		2	6
	Saudi Arabia			1		1
	Sub Total	3	1	1	2	7
Africa	Egypt	2				2
	Kenya	3	3			6
	Ethiopia	2	1			3
	Madagascar		1			1
	Ghana		1			1
	Algeria	1				1
	Sub Total	8	6	0	0	14
Oceania	Australia				2	2
	New Zealand				1	1
	Papua New Guinea	1			1	2
	Tonga	1				1
	Sub Total	2	0	0	4	6
North America	U.S.A.		1		7	8
	Canada				2	2
	Sub Total	0	1	0	9	10
Latin America	El Salvador				1	1
	Argentina	1				1
	Sub Total	1	0	0	1	2
Europe (including NIS)	France		1		6	7
	Germany				9	9
	Russia		1		1	2
	Spain	4				4
	Serbia		1		2	3
	Portugal				1	1
	U.K.				6	6
	Sub Total	4	3	0	25	32
Total		165	134	77	144	520

Expenditure, Enrollment

Expenditure	Enrollment	Graduate Students		Undergraduate Students	Research Students, etc.	Total
		Doctor's Course	Master's Course			
Japanese Government Scholarship						
Nominated by Japanese Embassies		20	2	1	12	35
Nominated by Okayama University		37	7		2	46
Nominated in Japan		6				6
The Japan-Korea Joint Exchange Program for Undergraduate Students in Science and Engineering				18		18
Sub Total		63	9	19	14	105
Private						
Malaysian Government				16		16
Saudi Arabian Government				1		1
Short-term Student via JASSO					40	40
Private		102	125	41	90	358
Sub Total		102	125	58	130	415
Grand Total		165	134	77	144	520

7 The Accommodation for International Students and Researchers

Classification			Capacity	Building Area	Address
International House for International Students and Researchers	For International Students	For Single Students	18	2,167	3-1-1 Tsushima-naka, Kita-ku, Okayama
		Married Researchers	28		
	For Researchers	Single Researchers (long-term)	3		
		Single Researchers (short-term)	30		
Kuwanoki Dormitory for International Students	North Wing	For Single Students	51*	1,455	6-1 Tsushima-Kuwanoki-cho, Kita-ku, Okayama
	South Wing	For Single Students	100	3,324	
Fukui Dormitory for International Students		For Single Students	21	825	2-10-4 Tsushima-Fukui, Kita-ku, Okayama

Note: Asterisk, " * ", indicates including 1 barrier-free room.

The "Dormitories for International Students and Researchers" were established to provide accommodations for international students and researchers who pursue their study and research at Okayama University and to promote international exchange and friendship. In addition to the existing dormitories "Kuwanoki and Fukui Dormitory for International Students", "International House for International Students and Researchers" was established in April 2011, in order to enhance residential support for international students. Furthermore, the North Wing of "Kuwanoki Dormitory" was renovated in November 2012 for the added comfort of the residents. All the dormitories are conveniently located on Tsushima Campus, the main campus of the university. Thus, such a comfortable residential environment enables the residents to lead a productive campus-life.



International House

Beds and Patients

Fiscal Year 2014

Clinics	Beds	Patients per day	
		Inpatients	Outpatients
Medicine	826	720	1,895
General Medicine			
Gastroenterology			
Hematology and Oncology			
Allergy and Respiratory Medicine			
Nephrology, Diabetology and Endocrinology			
Rheumatology			
Cardiovascular Medicine			
Neurology			
Infectious Disease			
Gastroenterological Surgery			
Hepato-biliary and Pancreatic Surgery			
Respiratory Surgery			
Breast and Endocrine Surgery			
Urology			
Cardiovascular Surgery			
Pediatric Surgery			
Orthopaedic Surgery			
Plastic and Reconstructive Surgery			
Dermatology			
Ophthalmology			
Otolaryngology			
Neuropsychiatry			
Neurological Surgery			
Anesthesiology and Resuscitology			
Pediatrics			
Pediatric Cardiology			
Child Neurology			
Pediatric Hematology and Oncology			
Pediatric Anesthesiology			
Pediatric Radiology			
Obstetrics and Gynecology			
Radiology			
Emergency Medicine			
Anatomic Pathology			
Palliative and Supportive Medicine			
Dentistry	23	21	666
Comprehensive Dentistry			
Operative Dentistry			
Periodontics and Endodontics			
Fixed Prosthodontics			
Occlusion and Removable Prosthodontics			
Oral and Maxillofacial Reconstructive Surgery			
Oral and Maxillofacial Surgery and Biopathology			
Oral Diagnosis and Dentomaxillofacial Radiology			
Dental Anesthesia			
Orthodontics			
Preventive Dentistry			
Pediatric Dentistry			
Misasa Medical Center	60 (Pause)	0	85
Internal Medicine			
Total	909	741	2,646



Inpatient Ward



Advanced Medical Center



Outpatient Clinics (Medical & Dental)



Lung transplantation from a brain-dead donor



Misasa Medical Center

The University Libraries consist of the Central Library, the Shikata Branch Library, and the Institute of Plant Science and Resources Branch Library. They provide more than 2,100,000 books which is the largest collection of books in Okayama Prefecture. The University Libraries service extend to local communities and other educational institutions. The University Libraries provide approximately 30,000 e-journals, 30 databases, and publish the academic research achievements of Okayama University. The University Libraries promote the functional enhancement of online services to support research and learning.



Central Library

Books

As of April 1, 2015

Classification	Japanese and Chinese Books	Foreign Books	Total
Central Library	1,173,914	481,529	1,655,443
Shikata Branch Library	133,734	119,852	253,586
Institute of Plant Science and Resources Branch Library	94,928	92,056	186,984
Institute for Study of the Earth's Interior	567	4,413	4,980
Grand Total	1,403,143	697,850	2,100,993



Shikata Branch Library

The Ikeda Family Collection (Ikedake Bunko)

The Central Library houses the Ikeda Family Collection (Ikedake Bunko) which contains records and documents of the Ikeda clan, the feudal lords of Okayama from 1632 to 1871. The collection consists of an archive of about a hundred thousand legislative documents, Japanese classics, and Chinese classics. The collection is well known as a source of primary materials for research on the Shogunate government and clan governments during the Edo period.



Map of Bizen Province (1596-1615. Okayama Castle can be seen in the lower left)

OKAYAMA UNIVERSITY Press

Okayama University Press was established in April, 2007 to publish the results of education and research of Okayama University. Okayama University Press publishes paper and electronic editions. Electronic editions are distributed through the Okayama University Digital Information Repository.

■ Joint Usage / Research Center

■ Institute of Plant Science and Resources

Research Institute

Joint-usage/research center “Plant Genetic Resources and Stress Science”

The Institute was founded in 1914 as the “Ohara Institute for Agricultural Research” by Magosaburo Ohara, a major figure in the modernization of Okayama, to advance the agricultural sciences. In 1952, the institute became affiliated with Okayama University and was renamed the “Institute for Agricultural Biology.” In 1988, the Institute was renamed the “Research Institute for Bioresources.” The institute was selected as a center-of-excellence in the fields of “plant genetic resources and plant stress science” by the Ministry of Education, Culture, Sports, Science and Technology, in June 2009. On April 1, 2010, the institute was renamed the “Institute of Plant Science and Resources (IPSR)” as a joint usage/research center for scientists in Japan. In 2014, the Institute celebrated the 100th anniversary of its foundation.

The IPSR comprises the Atmospheric Stress unit, Soil Stress unit, Biotic Stress unit, Genetic Resources unit, and Applied Genomics unit under two research areas (the Research Core for Plant Stress Science and the Research Core for Future Crops) and one research center (the Barley and Wild Plant Resource Center). The institute's current scientific mission is to develop new crops that will be suited for multiple stress environments, and to promote agricultural production in stress affected areas worldwide.



■ Institute for Study of the Earth's Interior

Nationwide Joint-use Facility

National joint-use/collaboration research center for “Earth and Planetary Materials Sciences”

The Institute for Study of the Earth's Interior is a nationwide joint-use research center in earth sciences, consisting of Analytical Planetary Chemistry, Experimental Planetary Physics, Promotion of International Collaborative Research, and International Affairs. The major objectives of the Institute are to undertake research on the origin, evolution, and dynamics of the Earth utilizing highly advanced analytical and experimental techniques and to conduct collaborative research with domestic and foreign scientists and students as an international Center-of-Excellence. Since June 2009, the Institute has been designated as a National joint-use/collaboration research center for pursuing “Earth and Planetary Materials Sciences” by the Ministry of Education, Sports, Culture, Science and Technology, Japan.



■ Joint Usage / Education Center

■ Ushimado Marine Institute

National joint-use/collaboration center for “Experimental Biology with Organisms in Areas around Inland Seas”

The Institute was selected as a National joint-use/collaboration center in the field of experimental, integrative biology and as a sole center-of-excellence among the marine/fishery stations in Western Japan by the Ministry of Education, Sports, Culture, Science and Technology, Japan in April 2011.

■ Organization

■ Education Initiative

Education Initiative was founded October 2015 to support the reform of education at Okayama University. It conducts information gathering, research and development, and survey research on the planning and reform of higher education. Education Initiative assesses the currently implemented curriculum and pedagogy, thereby leading to the improvement of education at Okayama University.

■ Organization for Education and Student Support

Following Okayama University's educational philosophy, the Organization for Education and Student Support was founded to discuss and design improvements to support all students at Okayama University educationally and otherwise. The Organization is composed of eight centers including the Educational Center for Researchers of the Next Generation which was established in October 2014.

■ Organization for Research Promotion & Collaboration (ORPC)

The Organization for Research Promotion & Collaboration (ORPC) promotes scientific research, the activities of the industry-university-government co-operation, and organizes the management and utilization of intellectual properties generated from the research activities at Okayama University. The ORPC is composed of five offices and two centers: the Research Promotion Office, the Industry-University-Government Co-operation Office, the Intellectual Property Office, the Social Cooperation Office, the Research Promotion & Collaboration Office for Medicine and Dentistry, the Collaborative Research Center, and the Research Center for Advanced Technology.



Organization for Research Promotion & Collaboration (ORPC)

■ Environment Health & Safety Intelligence Department

Environment Health & Safety Intelligence Department (EHSID) was founded January 2015. The EHSID assesses the safety risks and the health conditions of the university and establishes socially responsible policies to secure a comfortable and safe study, educational, and workplace environment at the university. In addition, the EHSID collaborates to improve the safety and health of the university community by cooperating with the Health Service Center, the Environmental Management Center, other University-wide centers, the eleven faculties, and the seven graduate schools.



Quality Assurance Center

The Quality Assurance Center works to assure and improve the quality of education and research through evaluation systems and to help the University achieve accountability to the public. The Center plans and coordinates various self-assessments and third-party evaluations, analyzes the results, and offers suggestions for improvement.

Health Service Center

The Health Service Center was established to maintain and improve the health of students and faculty members. Periodic medical examinations are scheduled to monitor the health of the university community.

Furthermore, physical and mental consultations are offered by physicians, public health nurses, and dietitians. There is a branch at Shikata Campus.

Environmental Management Center

The Environmental Management Center was established to improve environmental management and occupational safety. The center conducts environmental management duties such as the monitoring of discharged water, hazardous waste management, and the safe handling and storage of hazardous substances in workplaces and laboratories. It also conducts workshops and carries out studies within the remit of its duties.

Center for Information Technology and Management

The Center for Information Technology and Management (CITM) promotes the integrated development and operation of IT infrastructure for the research and the education. CITM installs and updates advanced IT facilities, promotes information security, and enforces compliance with the university's IT regulations.

Center for Faculty Development

The Center for Faculty Development was founded in April 2003 to conduct research on self-evaluation schemes and procedures, construct an effective teaching and learning system of general education, and facilitate teaching activities and their continual improvement at Okayama University. The center is composed of the Section for Educational Systems, the Section for Faculty Development, and the Section for Lifelong Learning and Service to Community. It also includes university-wide committees.

Language Education Center

The Language Education Center promotes foreign language education in Okayama University and is working on planning, implementing, and evaluating activities for language education development. Restructured in April 2010, the LEC is composed of three sections and committees dedicated to the teaching of English, Japanese, and other foreign languages. The L-cafe that belongs to the LEC offers a social learning space for stimulating self-study.

Interactive Sport Education Center

The Interactive Sport Education Center was founded in April 2006 to facilitate the smooth implementation of activities for sport education, promote students' proactive participation in sports, and to contribute to research on sports.

The center is composed of the Section for Sport Education, the Section for Sport Medicine and the Section for Coaching and related committees. It is mainly in charge of the planning-conducting-evaluating of sports education, consultation on sports activities and sports medicine.

Center for Safe and Disaster-Resistant Society

The Center for Safe and Disaster-Resistant Society was established in January 2014. Relevant areas of research and education will be organized with the cooperation of the organizations such as the Japan Atomic Energy Agency (JAEA), the Japan Nuclear Education Network (JNEN) associated with Okayama University, Tokyo Institute of Technology, Osaka University, Kanazawa University, Fukui University, Ibaraki University and Nagoya University. The key topics are radiation measurement, protection, and human health; safety design for disaster-resistant facilities; radioactive waste management; establishment of a safety culture; security management; and, public communication. We will provide graduate programs including Master and Doctoral courses but also intensive courses which are available for national and international post-graduates and management/technical staff working in relevant industries.

Educational Center for Researchers of the Next Generation

The Educational Center for Researchers of the Next Generation was founded in October 2014 to manage the "Science-ahead Global Campus Okayama" (GSCO) program. The GSCO program mentors talented high-school students in scientific research.

Student Support Center

The center is composed of the Student Advice Department, the Disability Resources Department, the Student Support Department, and the Section for Supporting Campus Life. The Student Advice Department offers counseling to students who have worries or problems. The Disability Resources Department helps challenged students access on-campus services. The Student Support Department helps in preventing problems in campus life and provides economic support.

Career Development Center

The Career Development Center conducts career education consisting of three modules: basic, practice, and total exercise in a systemized program. The center offers extra activity support such as student clubs.

For job search support, the center offers individual advising, employment placement seminars, and other events to support students after their graduation.

Career Support Center for Young Researchers

To support doctoral students and postdocs in developing their careers comprehensively and practically, the Career Support Center for Young Researchers offers the Doctor Career Support Program which consists of internships, lectures and seminars, lecture presentations, business exchange meetings, and career consultations.

Admission Center

The Admission Center was founded in April 2004 to facilitate admissions to Okayama University, conduct the nationwide test sponsored by National Center for University Entrance Examinations, carry out R&D on admission systems according to the University's admission policies, and engage in PR activities aimed at prospective students.

In addition to carrying out the planning of entrance examinations, the Admission Center conducts research and reports on the examination results and academic achievement of students after enrollment. The center also conducts various PR activities like holding briefings on and off campus.

Finally, it is responsible for admissions and makes every effort to prevent errors by checking examination questions.

Center for Global Partnerships and Education

The Center for Global Partnerships and Education was founded in July 2014 reorganizing the International Center. It plans and implements strategies for the internationalization of Okayama University and strongly supports the international exchanges of each department. The Center has additional functions such as concluding cooperation agreements with foreign universities and research institutions, promoting the "Exchange Program Okayama" (EPOK) and other studying abroad programs. In addition to support for international students coming to Okayama University, it provides information and service on study and life in Japan to international students at Okayama University.

Institute of Global Human Resource Development

Founded in April 2013, this institute aims to equip students with the professional, linguistic (English), and communicative capabilities to meet the challenges of globalization. The institute runs the Special Program for Global Human Resource Development in collaboration with all faculties and relevant centers.

Academic and General Okayama University Regional Research Association

The Center for Regional Research was founded in November 2011 to enforce social action programs. The center coordinates programs between the university and the community and works as a think tank to promote the social contribution of regional partnerships. The center manages satellite campuses in the center of city. The center also established a new Practical Training Program through Social Action in 2014 to promote practical education and provides support for Global Human Resource training in order to facilitate practical action through dialogue between faculty, students, and citizens.

Center for Teacher Education and Development

The center performs research and development of the all-campus core curricula for the teaching profession and conducts teaching instruction, teaching support, and consulting. It also carries out projects with associated institutions such as specified public schools in the prefecture, attached schools, and boards of education. Finally, it is implementing a teacher training program in the field of science and mathematics.

Center for the Development of Medical and Health Care Education

The Center for the Development of Medical and Health Care Education was established in 2005 as a joint research institute on medical education for the University. The center performs project research and development of medical education in undergraduate education including medicine, dentistry, public health and nursing, pharmacy, and also integrated education in post-graduate clinical training at the Okayama University Hospital. The center, thereby, promotes local cooperation in health care and contributes to the development of medical professionals.

Advanced Science Research Center

The Advanced Science Research Center improves support systems for the progress of education and research in the natural sciences, especially life sciences, by establishing interdisciplinary fields, promoting advanced research, cooperating with local society, and contributing to the education and research activities at Okayama University. The center has adopted a long-term perspective to support education and research in science to stimulate collaborative research.

Assisted Reproductive Technology Center

This Center was founded to develop the specialized educational programs necessary for students who aspire to become embryologists for assisted reproductive medicine and educational programs for embryologists on active service. Furthermore, the Assisted Reproductive Technology Center is developing a global education and research core for assisted reproduction in cooperation with foreign universities and research institutes.

Waste Management Research Center

With the aims of promoting R&D in waste management, cultivating specialists in both waste management and environmental technology assessment, and encouraging regional collaboration among industry, government, and academia, the Waste Management Research Center performs comprehensive studies on waste management to develop a sound material-cycle society in Japan and in other Asian countries.

Archaeological Research Center

This center aims at conserving and investigating archaeological sites on campus from the Jomon to recent periods through rescue excavations. This center also publishes excavation reports, exhibits excavated materials and takes part in education using them.

Strategic Office for Education and Research

The Strategic Office for Education and Research was established in June 2008 to fulfill Okayama University's responsibilities as the core university in the Chugoku-Shikoku Area. The purpose of this office is to improve educational advancement and research revitalization beyond the bounds of department and graduate courses in accordance with changes in society and developments in academia. The Strategic Office for Education and Research has set up some satellite facilities for particular educational and research programs.

Support Unit for Strategic Programs University Research Administrator office

The URA (University Research Administrator) is a brain trust advising the university's top management that is deeply involved in the university's research policies, such as selecting research arrangements and core areas.

One of its roles is to formulate research policies designed to establish Okayama University's position as a Research University.



Research Core for Interdisciplinary Sciences (RCIS)

The Research Core for Interdisciplinary Sciences (RCIS) is a research organization for promotes independent young researchers to develop innovative interdisciplinary sciences. RCIS was supported by the Ministry of Education, Culture, Sports, Science and Technology (MEXT) from 2008 to 2012 with funds for the Development of Human Resources in Science and Technology and promoted 13 tenure-track faculty members. In the 2015 fiscal year, four tenure associate professors are conducting research in new interdisciplinary scientific fields.



Innovation Center Okayama for Nanobio-targeted Therapy (ICONT)

The Innovation Center Okayama for Nanobio-targeted Therapy (ICONT) was established in July 2006 as an in-house, deregulated zone for an industrial-academic alliance with the purpose of achieving patient-friendly targeted therapy through interdisciplinary research.

Targeted therapy is a futuristic treatment that combines innovative drugs, new carrier systems, and advanced labeling technology to attack a disease while minimizing adverse effects. ICONT is an industrial-academic alliance in collaboration with 5 enterprises*. This project is also the main focus of the Okayama Medical Innovation Center (OMIC).

The most important project is to develop a cutting edge cancer gene therapeutic agent using REIC/Dkk-3 against intractable solid cancers. At present, clinical trial against malignant mesothelioma is scheduled by Kyorin Pharmaceutical Company within a framework of the "Next generation technology transfer program" (NexTEP).

* EPS Holdings, Inc. / Kyorin Pharmaceutical Co., Ltd. / MITSUI-SOKO

HOLDINGS Co., Ltd. / Momotaro-Gene Inc. / Medical & Biological Laboratories Co., Ltd.



Research Core for Extreme Quantum World

The Research Core for Extreme Quantum World aims to create new fields of fundamental physics combining atomic physics and quantum optics with cosmology and particle physics. A more specific purpose is to open up a new field of "Neutrino mass spectroscopy with atoms" using a "macro-coherent amplification mechanism", a new principle invented and proven experimentally by this group, and production technology of quantum coherent targets.



Collaborative Research Center of Okayama University for Infectious Diseases in India

The Collaborative Research Center of Okayama University for Infectious Diseases in India was established in 2007 to execute the government program of "Founding Research Centers for Emerging and Reemerging Infectious Diseases" by the Ministry of Education, Culture, Sports, Science and Technology. This program is now named the "Japan Initiative for Global Research Network on Infectious Diseases". Three researchers (a professor, a senior assistant professor, and an assistant professor) and one administrative staff member have been sent to Kolkata, India from Okayama University. Basic and applied research on the microbes causing enteric diseases has been extensively performed in the center.



Research Center of New Functional Materials for Energy Production, Storage, and Transport

The Research Center of New Functional Materials for Energy Production, Storage and Transport (RCNFM) aims at studying and developing new functional materials and devices which contribute to a sustainable society. In particular, the RCNFM has produced world-leading research achievements in developing new high-Tc superconductors and organic electronic devices, in synthesizing organic materials for electronics, and in the theoretical chemistry of energy storage materials. 13 professors are studying in the RCNFM with their research teams.



■ Organization for Diversity Management

The Organization for Diversity Management was founded in January 2009 to remove barriers facing employees from different backgrounds enabling the sustainable development of Okayama University. The Organization of Diversity Management is composed of the Office for the Promotion of Gender Equality, the Office for Advancement of Measures to Support Raising the Next-Generation of Children, the Office for the Promotion of Employment of Physically-Challenged Workers, and the Office for the Stabilization of Employment of the Elderly. These offices proactively plan and implement measures to promote the work-life balance of all employees.



■ Tokyo Office, Overseas Offices

■ Okayama University Tokyo Satellite Office

Okayama University Tokyo Satellite Office moved to Kyobashi, Chuo-ku, Tokyo in April 2010. Faculty members support job-hunting students, perform follow-up activities for graduates, assist the alumni association, researches and collaborations with industry, academia and government in the Tokyo Metropolitan area in addition to public relations.

■ Okayama University Office in Hue, Vietnam

Okayama University Office in Hue, Vietnam - the first overseas office of Okayama University - was established in April 2007 to promote academic and educational exchange, raise the overseas profile of Okayama University, and train our staff to play an active part in the world.



■ Okayama University : Japan Educational Information Center, Myanmar

Okayama University was assigned to implement the "Coordinator for Study in Japan Project" in Myanmar by the Ministry of Education, Culture, Sports, Science and Technology (MEXT). The coordinator has been promoting "study in Japan" to Myanmar students since March 2014.

■ Okayama University Office in Changchun, Shenyang and Shanghai, China

Changchun and Shenyang offices were established in the northeast district of China August 2007. They are located at the Northeast Normal University, Changchun, and the China Medical University in Shenyang. They promote double degree program and academic exchange with prioritized universities in China such as Jilin University. In addition, Shanghai office was newly established on the campus of University of Shanghai for Science and Technology in October 2015. All the three offices in China provide advice and information to Chinese students who are interested in studying at Okayama University and perform public relations work and support for the International Alumni Association: China Branch.



■ Okayama University Office in London, U.K.

Okayama University Office in London, U.K. was established in April 2014 to promote globalization of the university's students and staff by conducting PR activities for the university and strengthening relationships with universities and research institutions in the U.K.

■ Okayama University Silicon Valley Office

Okayama University Silicon Valley Office is scheduled to open in November 2015 in Silicon Valley, California. This office will promote and license our academic research outcomes in the US market. It will also support joint research, industry-university collaboration, and foreign student exchange program. It is planned to be a center of education and advanced research as an overseas campus of Okayama University.

University Union, 50th Anniversary Hall

University Union

Classification	Total Floor Area	Capacity	Address
Facilities for Extracurricular Activities	1,005 [㎡]	532	2-1-1 Tsushima-naka, Kita-ku, Okayama
Facilities for Student Welfare	190	110	
Academic Affairs Office	1,981		
Grand Total	3,176	642	



Pergola-where the university community can gather.

50th Anniversary Hall

Classification	Floor Area	Capacity	Address
T·KANEMITSU HALL	593 [㎡]	409	1-1-1 Tsushima-naka, Kita-ku, Okayama
Large meeting room	96	60	
Medium meeting room	76	36	
Small meeting room	46	24	



Junko Fukutake Hall

Junko Fukutake Hall

Classification	Floor Area	Capacity	Address
Lecture hall	561.89 [㎡]	354	2-5-1 Shikata-cho, Kita-ku, Okayama
Conference space	53.5	30	



Junko Fukutake Terrace

Junko Fukutake Terrace

Classification	Floor Area	Address
J Terrace Café 40 Seats	149.17 [㎡]	1-1-1 Tsushima-naka, Kita-ku, Okayama

North Facility for Student Welfare (Muscat Union)

Floor	Facilities	Total Floor Area	Address
1F	Bookstore	1,900 [㎡]	3-1-1 Tsushima-naka, Kita-ku, Okayama
2F	Cafeteria 244 Seats		
3F	Cafeteria 264 Seats		

South Facility for Student Welfare (Peach Union)

Floor	Facilities	Total Floor Area	Address
1F	Convenience Shop Barber's Shop Travel Service Center	2,340 [㎡]	2-1-1 Tsushima-naka, Kita-ku, Okayama
2F	Cafeteria 227 Seats		
3F	Cafeteria 278 Seats		
4F	Restaurant 121 Seats		

East Facility for Student Welfare (Pione Union)

Floor	Facilities	Total Floor Area	Address
1F	Convenience Shop Cafeteria	909 [㎡]	3-1-1 Tsushima-naka, Kita-ku, Okayama
2F	Cafeteria 328 Seats		

Student Dormitory

Classification	Total Floor Area	Capacity	Address
Women's Dormitory	2,024 [㎡]	108	6-2 Tsushima-Kuwanoki-cho, Kita-ku, Okayama



Women's Dormitory

2014 Fiscal Year Revenue and Expenditure

Balance Sheet

March, 31 2015
(unit: million yen)

account	amount of money
Assets	
Fixed Assets	
Tangible Fixed Assets	124,381
Intangible Fixed Assets	543
Others	1,370
Fixed Assets Total	126,295
Current Assets	
Cash And Cash Equivalents	5,909
Accounts Receivable	6,130
Others	2,300
Current Assets Total	14,339
Total	140,635

account	amount of money
Liabilities	
Fixed Liabilities	42,943
Current Liabilities	14,562
Total	57,505
Net Assets	
Capital Stock	69,804
Capital Surplus	7,825
Earned Surplus	5,498
Total	83,129
Total	140,635

Income Statement

April 1, 2014~March 31, 2015
(unit: million yen)

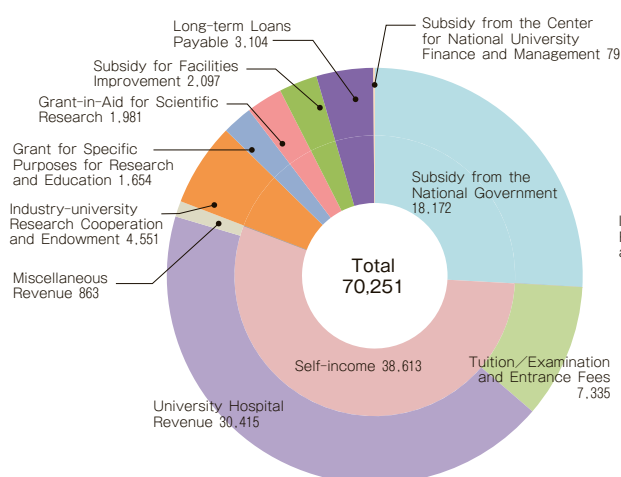
account	amount of money
Ordinary Expenses	65,581
Operating Expenses	63,858
General and Administrative Expenses	1,320
Others	401
Ordinary Revenues	66,183
Revenues from Subsidies for Management Expenses	17,752
Revenues from Student tuition fees etc.	7,950
Revenues from University Hospital	30,685
Others	9,795
Ordinary Profit	602
Extraordinary Loss	424
Extraordinary Profit	400
Net Profit	578
Gross Profit	579

Note: The fractions under one million yen are omitted.
Note: Subject to change until ministry approval.

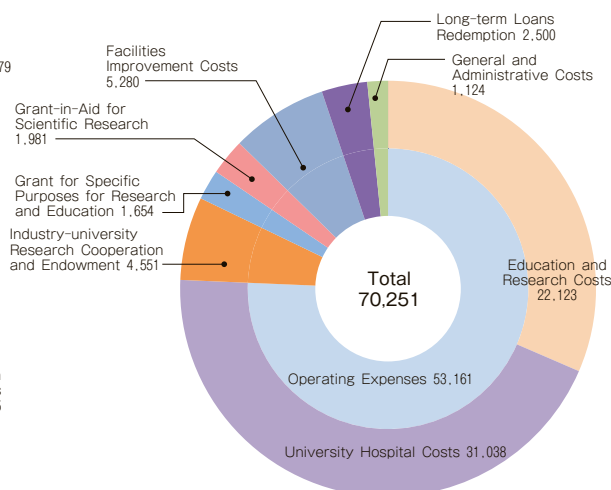
2015 Fiscal Year Budget

(unit: million yen)

Income



Expenditure



Scientific Research Grant

Grants-in-Aid for Scientific Research (KAKENHI)

Grants and Adoptions (Fiscal Year 2015)

As of May 31, 2015

Subject for Research	Adoptions	Thousand Yen
Grant-in-Aid for Specially Promoted Research	1	63,050
Grant-in-Aid for Scientific Research on Priority Areas		
Grant-in-Aid for Scientific Research (S)	1	53,170
Grant-in-Aid for Scientific Research (A)	14	134,550
Grant-in-Aid for Scientific Research (B)	104	517,920
Grant-in-Aid for Scientific Research (C)	395	593,450
Grant-in-Aid for Challenging Exploratory Research	93	146,510
Grant-in-Aid for Young Scientists (A)	8	63,960
Grant-in-Aid for Young Scientists (B)	164	232,440
Grant-in-Aid for Research Activity Start-up	13	16,900
Grant-in-Aid for JSPS Fellows	42	42,940
Grant-in-Aid for Scientific Research on Innovative Areas (Research in a proposed research area)	15	96,720
Total	850	1,961,610

Note: The grants above include all overhead expenses.

Trends in Grants and Adoptions

Fiscal Year	2003	2004	2005	2006	2007	2008	2009	2010	2011	2012	2013	2014
Thousand Yen	1,672,412	1,700,913	1,870,749	1,918,950	1,994,000	2,034,989	2,018,005	2,232,960	2,334,819	2,431,524	2,215,276	2,228,337
Adoptions	621	636	657	682	666	655	686	732	807	867	863	832

Grant from Outside the University

Fiscal Year 2014

Classification	Number	Thousand Yen
Joint Research	247	360,466
Trust Research	225	1,731,329
Endowment	2,187	1,325,961

Joint Research Chairs

As of May 1, 2015

Faculty	Chair Category	Research Period	Research Aim
Graduate School of Medicine, Dentistry and Pharmaceutical Sciences	Department of Management Of Technology (MOT) for Medical Innovation	October 1, 2013~ September 30, 2015	To conduct research in order to accelerate the clinical development of gene-based medicine, and create a new drug discovery platform by combining CRO and ARO functions.

Endowed Chairs

As of May 1, 2015

Faculty	Chair Category and Sponsor	Endowment Period	Endowment Aim
Graduate School of Medicine, Dentistry and Pharmaceutical Sciences	Department of Medical Materials for Musculoskeletal Reconstruction	April 1, 2007~ March 31, 2018	To develop and improve medical materials for musculoskeletal reconstruction in the field of bone and joint disease
Graduate School of Medicine, Dentistry and Pharmaceutical Sciences	Department of Chronic Kidney Disease and Peritoneal Dialysis	January 1, 2008~ December 31, 2015	To elucidate pathogenesis of chronic kidney disease and develop research and educational systems for peritoneal dialysis
Graduate School of Medicine, Dentistry and Pharmaceutical Sciences	Department of Diabetic Nephropathy	October 1, 2008~ September 30, 2015	To elucidate pathogenesis of diabetic nephropathy and develop therapeutic and educational systems for diabetic nephropathy
Graduate School of Medicine, Dentistry and Pharmaceutical Sciences	Department of Community and Emergency Medicine	April 1, 2010~ March 31, 2017	To establish the optimum community medical system in Okayama district through research and education on emergency medical care
Graduate School of Medicine, Dentistry and Pharmaceutical Sciences	Department of Cardiovascular Therapeutics	April 1, 2010~ March 31, 2016	To establish new cardiovascular therapies to each patients equally
Graduate School of Medicine, Dentistry and Pharmaceutical Sciences	Department of Primary Care and Medical Education	May 1, 2010~ March 31, 2016	To develop and conduct an interdisciplinary program in community medicine that focuses on education, research, and patient care with emphasis on human resource development to contribute to the regional health and welfare in Okayama
Graduate School of Medicine, Dentistry and Pharmaceutical Sciences	Department of Intelligent Orthopaedic Systems	September 1, 2010~ March 31, 2018	To develop highly functioned implant devices and their wide application, including computer-assisted surgery, for reconstruction of a healthy locomotive system
Graduate School of Medicine, Dentistry and Pharmaceutical Sciences	Department of Chronic Kidney Disease (CKD) and Cardiovascular Disease (CVD)	November 1, 2011~ October 31, 2016	To develop CKD medical systems and contribute to the suppression of the increase of end-stage renal disease patients and prevention of complicating cardiovascular disease (CVD) through tight cooperation with cardiologists
Graduate School of Medicine, Dentistry and Pharmaceutical Sciences	Department of Pediatric Acute Medicine	April 1, 2013~ March 31, 2018	To establish the pediatric emergency community system in the Fukuyama district through the research of effective medical systems and education on pediatric emergency medical care
Graduate School of Medicine, Dentistry and Pharmaceutical Sciences	Department of Gerontology Research	July 1, 2013~ June 30, 2016	To develop medical equipment and medical systems focusing on home care and telemedicine, as well as to contribute for the regional health and the health in the aging of society
Graduate School of Medicine, Dentistry and Pharmaceutical Sciences	Department of Traumatology and Emergency Intensive Care Medicine	November 1, 2014~ October 31, 2016	To contribute to the construction of an emergency medical system of trauma and to respond to the challenges of trauma care and disaster. We do education and training of human resources who are familiar with the life-saving medical treatment of trauma care system

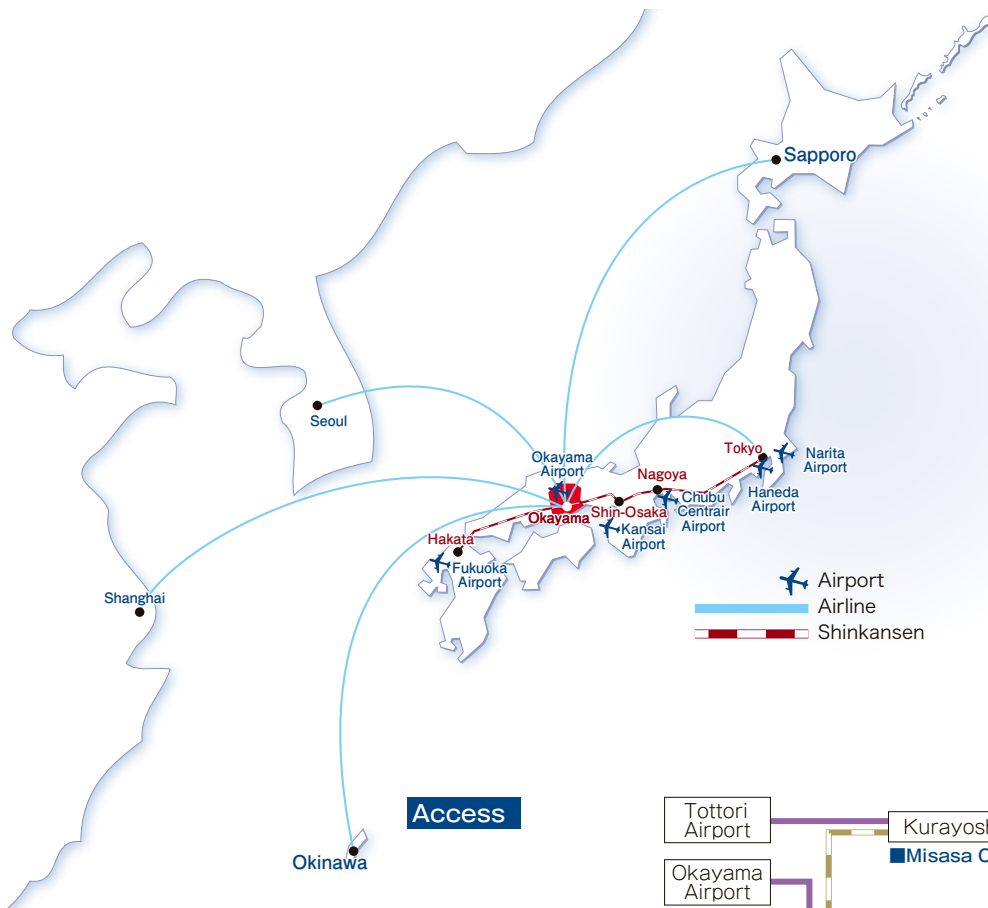
Land and Buildings

As of May 1, 2015

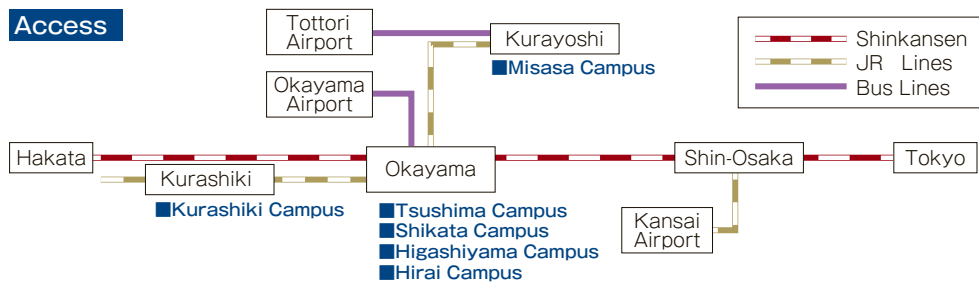
Classification	Land(㎡)	Buildings		Address
		Ground Floor(㎡)	Total Floor(㎡)	
■ Tsushima Campus	639,621			
Administrative Center		22,324	50,508	1-1-1 Tsushima-naka, Kita-ku, Okayama
Center for Information Technology and Management		993	2,355	3-1-1 Tsushima-naka, Kita-ku, Okayama
Center for Global Partnerships and Education		3,130	7,771	2-1-1 Tsushima-naka, Kita-ku, Okayama
University Library		4,049	16,386	3-1-1 Tsushima-naka, Kita-ku, Okayama
Faculty of Letters, Law and Economics		5,823	19,399	〃
Faculty of Education		7,471	21,194	〃
Faculty of Science		5,738	17,901	〃
Faculty of Pharmaceutical Sciences		3,166	9,227	1-1-1 Tsushima-naka, Kita-ku, Okayama
Faculty of Engineering		11,719	32,351	3-1-1 Tsushima-naka, Kita-ku, Okayama
Faculty of Environmental Science and Technology		1,506	11,200	〃

Classification	Land (㎡)	Buildings		Address
		Ground Floor (㎡)	Total Floor (㎡)	
Faculty of Agriculture		6,472	15,775	1-1-1 Tsushima-naka, Kita-ku, Okayama
Okayama Research Farm, Field Science Center		3,623	4,298	1-62 Tsushima-Kuwanoki-cho, Kita-ku, Okayama
Archaeological Operation Center		315	484	3-1-1 Tsushima-naka, Kita-ku, Okayama
Graduate School of Natural Science and Technology		2,044	13,021	〃
Organization for Research Promotion and Collaboration		941	2,430	〃
Advanced Science Research Center		1,876	4,751	Tsushima-naka, Kita-ku, Okayama
Health Service Center		469	668	2-1-1 Tsushima-naka, Kita-ku, Okayama
Environmental Management Center		675	657	3-1-1 Tsushima-naka, Kita-ku, Okayama
■ Shikata Campus	135,328			
Medical School, Dental School		20,770	80,944	2-5-1 Shikata-cho, Kita-ku, Okayama
University Hospital		19,610	108,178	〃
Advanced Science Research Center		1,803	7,550	〃
Nursery School		420	420	〃
■ Higashiyama Campus	53,428			
Center for Teacher Education and Development, Kindergarten, Primary School, Junior High School		9,608	15,756	2-13-80 Higashiyama, Naka-ku, Okayama
■ Hirai Campus	13,188			
School for Special Needs Education		3,261	4,553	3-914 Hirai, Naka-ku, Okayama
■ Hachihama Campus	89,536			
Hachihama Research Farm, Field Science Center		655	655	Higashinanaku, Tamano
■ Tsudaka Campus	312,484			
Tsudaka Livestock Farm, Field Science Center		1,721	2,278	Nichioji, Kita-ku, Okayama
■ Kurashiki Campus	38,536			
Institute of Plant Science and Resources		5,701	10,955	2-20-1 Chuo, Kurashiki
■ Misasa Campus	37,675			
Institute for Study of the Earth's Interior		2,302	5,718	827 Yamada, Misasa-cho, Tohaku-gun, Tottori
Misasa Medical Center		2,816	6,547	〃
■ Ushimado Campus	6,956			
Marine Laboratory		1,271	1,504	130-17 Kashino, Ushimado-cho, Setouchi
Training Institute for Extracurricular Activities		255	252	〃
■ Haga Campus	* (5,787)			
Collaborative Research Center		572	1,138	5302 Haga, Kita-ku, Okayama
■ Other Areas				
Handayama Research Forest	675,813			Tsushima, Kita-ku, Okayama
Institute for dissemination of Kibi Culture	2,104	344	344	1666 Kibitsu, Kita-ku, Okayama
Honjima Campus	22,764	433	537	494 Tomari, Honjima-cho, Marugame, Kagawa
Others	4,653	366	603	
Accommodations	32,467	7,396	31,872	
Total	2,064,553	161,638	510,180	

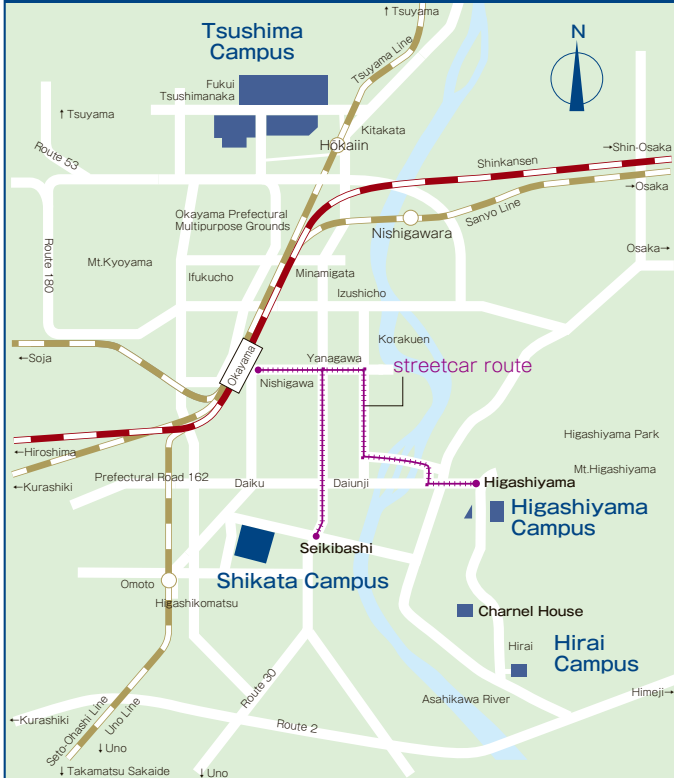
Note: Asterisk, " * ", leased land without compensation.



Access



Tsushima Campus / Shikata Campus Higashiyama Campus / Hirai Campus



Tsushima Campus

Tsushima North Campus

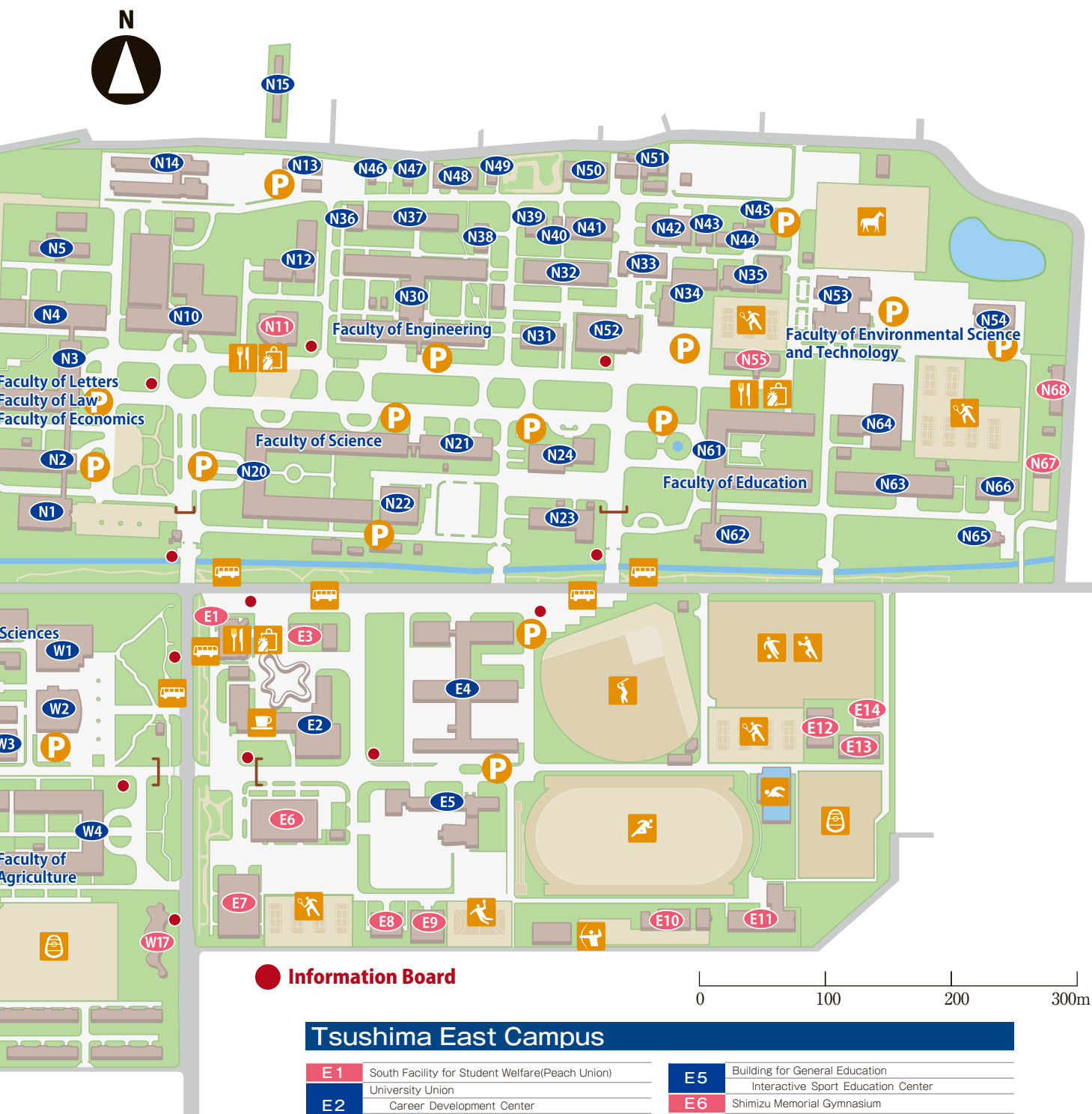
N 1	Humanities and Social Sciences General Research Building School of Law Attorney Training Center
N 2	Faculty of Letters, Law, and Economics Building No.2 Faculty of Law Faculty of Economics
N 3	Faculty of Letters, Law, and Economics Building No.1 Faculty of Letters Graduate School of Humanities and Social Sciences Center for East Asian Studies
N 4	Faculty of Letters, Law, and Economics Lecture Room Building
N 5	Archaeological Museum
N 10	University Library
N 11	North Facility for Student Welfare(Muscat Union)
N 12	Center for Information Technology and Management
N 13	Archaeological Research Center
N 14	International House
N 15	Fukui Dormitory for International Students Faculty of Science Main Building Faculty of Science Matching Program Course Graduate School of Natural Science and Technology
N 20	Faculty of Science Building No.2 Research Laboratory for Surface Science
N 21	Collaboration Center
N 22	Department of Instrumental Analysis & Cryogenics, Advanced Science Research Center
N 23	Department of Radiation Research, Tsushima Laboratory, Advanced Science Research Center

N 24	Graduate School of Natural Science and Technology, Building No.1 Research Center of Quantum Universe Photosynthesis Research Center
N 30~N 43 N 45~N 49	Faculty of Engineering Building No.1~No.14 · No.15~No.20 Faculty of Engineering Graduate School of Natural Science and Technology
N 44	Former Faculty of Engineering Building No.15 Academic and General Okayama University Regional Research Association
N 50	Former Faculty of Engineering Building No.21 Career Support Center for Young Researchers Department of Animal Resources, Tsushima North Laboratory, Advanced Science Research Center
N 51	Environmental Management Center
N 52	Graduate School of Natural Science and Technology, Building No.2 Waste Management Research Center
N 53	Faculty of Environmental Science and Technology Building Faculty of Environmental Science and Technology Graduate School of Environmental and Life Science
N 54	Research Center for Advanced Technology
N 55	East Facility for Student Welfare(Pione Union)
N 61	Faculty of Education Main Building Faculty of Education Graduate School of Education Center for Teacher Education and Development
N 62	Faculty of Education Lecture Building
N 63	Faculty of Education East Building
N 64	Faculty of Education Gymnasium
N 65 · N 66	Faculty of Education Music Hall
N 67	Archery Hall
N 68	Horses House



Tsushima West Campus

W 1	50th Anniversary Hall Administration Building Corporation Audit Office, Inspector Support Office
W 2	Administrative Center of Okayama University Quality Assurance Center Environment Health & Safety Intelligence Department
W 3	Former Administration Building Organization for Research Promotion & Collaboration
W 4~W 6	Faculty of Agriculture Building I ~ III Faculty of Agriculture Graduate School of Environmental and Life Science Assisted Reproductive Technology Center
W 7	Faculty of Pharmaceutical Sciences Building No. 1 · No. 2 Faculty of Pharmaceutical Sciences Graduate School of Medicine, Dentistry and Pharmaceutical Sciences
W 8	Medicinal Plant Garden
W 9	Okayama Univ.Incubator(Organization for small & Medium Enterprises and Regional Innovation, JAPAN)
W 10	Department of Genomics and Proteomics, Advanced Science Research Center
W 11	Department of Animal Resources, Tsushima South Laboratory, Advanced Science Research Center
W 13	Faculty of Agriculture Building IV Field Science Center
W 14	Kuwanoki Dormitory for International Students
W 15	Dormitory for Female Students
W 16	Tsushima Lodgings
W 17	Junko Fukutake Terrace



Shikata Campus



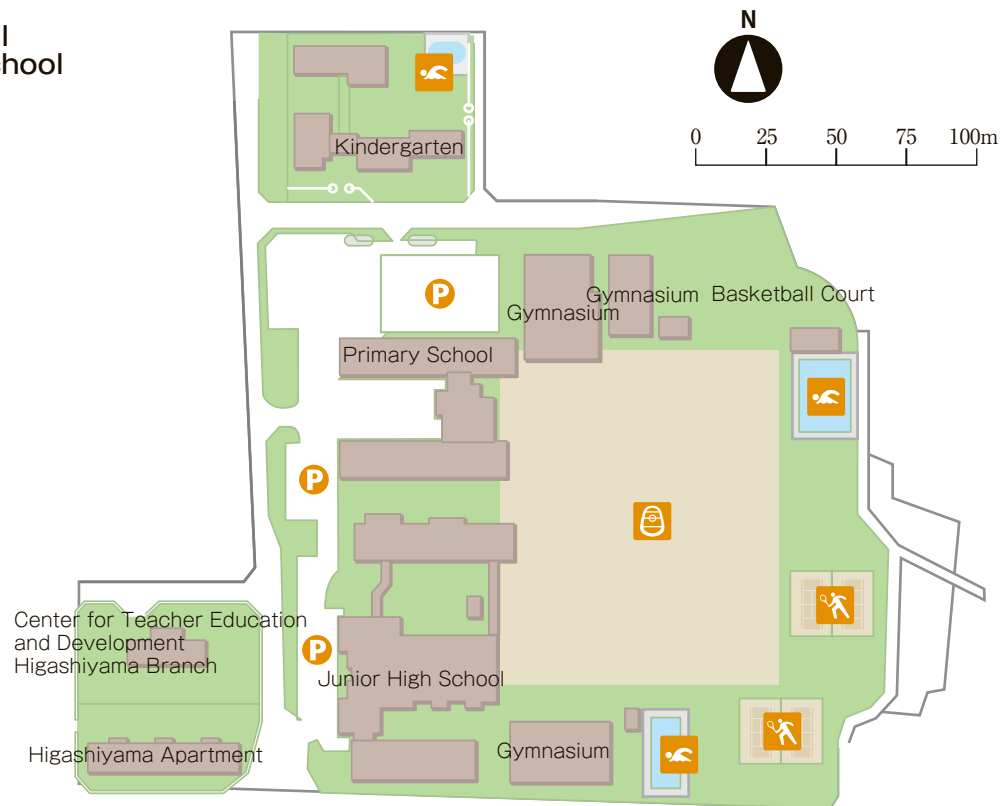
Shikata Campus

1	Administration Building
2	Out-patient Clinics(Medical)
3	Central Clinics
4	Inpatient Ward
5	Advanced Medical Center
6	Dental School,Out-patient Clinics (Medical & Dental)
7	Clinical Research Building
8	Clinical Education Building & Pathology Center
9	Former Radioisotope Research Center
10	General Education Research Building
11	Medical Research Building
12	Medical Science Building
13	Medical Education Building
14	Dissection Teaching Hall
15	Shikata Auditorium (Former Biochemistry Building)
16	Medical Research Archives (Former Nutrition Science Building)

17	Shikata Branch Library
18	Alumni Memorial Building
19	Faculty of Health Sciences Building
20	Gymnasium
21	Martial Arts Gymnasium
22	Koyukai Club Activities Facility
23	Community based Medical Education Center Okayama (MUSCAT CUBE)
24	Junko Fukutake Hall
25	Interdisciplinary Education and Research Building Center for the Development of Medical and Health Care Education
26	Department of Animal Resources,Shikata Laboratory,Advanced Science Research Center
27	Department of Radiation Research,Shikata Laboratory,Advanced Science Research Center

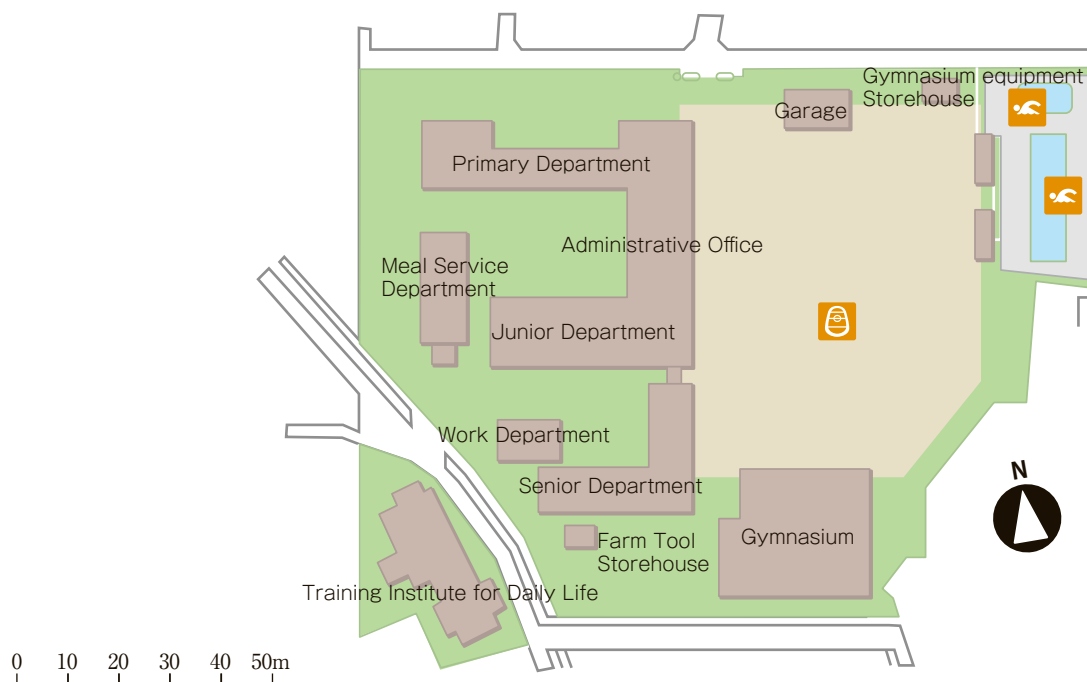
Higashiyama Campus

- Kindergarten
- Primary School
- Junior High School



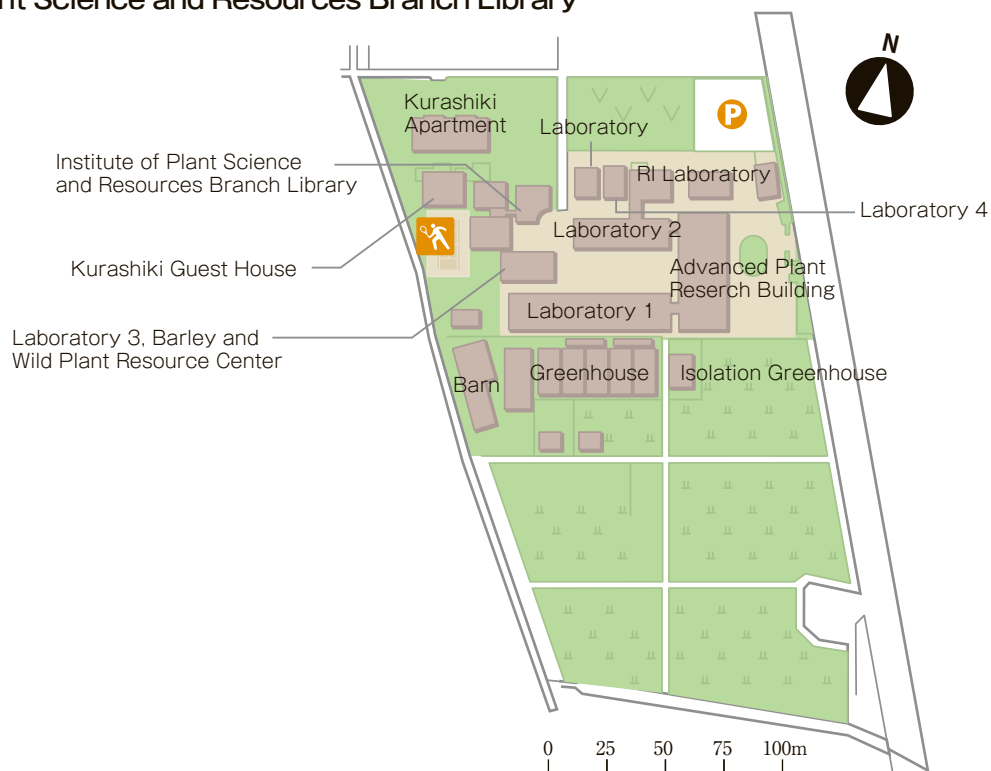
Hirai Campus

- School for Special Needs Education



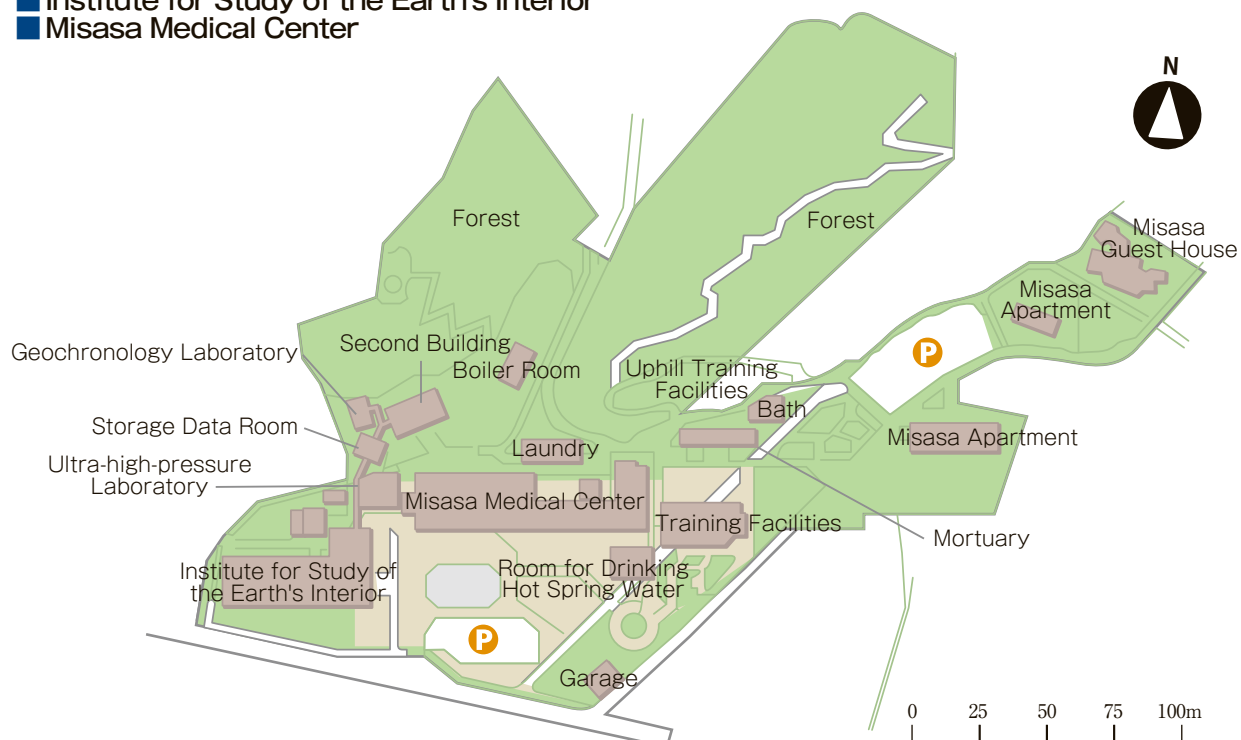
Kurashiki Campus

- Institute of Plant Science and Resources
- Barley and Wild Plant Resource Center
- Institute of Plant Science and Resources Branch Library



Misasa Campus

- Institute for Study of the Earth's Interior
- Misasa Medical Center



Tsushima Campus



Administrative Center of Okayama University

Faculty of Letters, Law and Economics
Graduate School of Humanities and Social SciencesFaculty of Education
Graduate School of Education

Faculty of Science



Faculty of Pharmaceutical Sciences



Faculty of Engineering

Faculty of Environmental Science
and Technology

Faculty of Agriculture

Graduate School of Natural Science and Technology
Graduate School of Environmental and Life Science

Shikata Campus

Medical School, Graduate School of
Medicine, Dentistry and Pharmaceutical
Sciences

Dental School



School of Law

Kurashiki Campus



Graduate School of Health Sciences



Institute of Plant Science and Resources

Misasa Campus



Institute for Study of the Earth's Interior







Emblem

OKAYAMA UNIVERSITY

1-1-1 Tsushima-naka, Kita-ku, Okayama 700-8530 Japan

Public Relations and Information Strategy

Tel: +81-86-252-1111 Fax: +81-86-251-7294

E-mail www-adm@adm.okayama-u.ac.jp

<http://www.okayama-u.ac.jp/>