

岡山大学

OKAYAMA UNIVERSITY

2023

PROSPECTUS



OKAYAMA
UNIVERSITY

GLOBAL GATE FOR LEARNING



OKAYAMA UNIVERSITY

Undergraduate School



10 Undergraduate Schools
1 Program

» For details, go to page 9.

Graduate School and
Research Institute



7 Graduate Schools
4 Research Institutes

» For details, go to page 8.10.

Student



13,225
Undergraduate Students Total **10,121**
Graduate Students Total **3,104**

» For details, go to page 15~17.

Faculty
and Staff



4,135
Faculty members **1,550**
Executives **10** Clerical Employees/
Technical Employees **2,575**

» For details, go to page 15.

Employment



Bachelor
Graduates **95.9%**
Master/Doctor
Graduates **92.0%**

Number of National Civil Service Examination
Successful Applicant

Professional Staff **61**
8th place nationwide
General Staff **237**
1st place nationwide

» For details, go to page 19.

International
Exchange



International Students

913



Distribution of International Partners

397 Universities **52** Countries/Regions

North America **47**
Latin America and the Caribbean **14**

» For details, go to page 22~29.

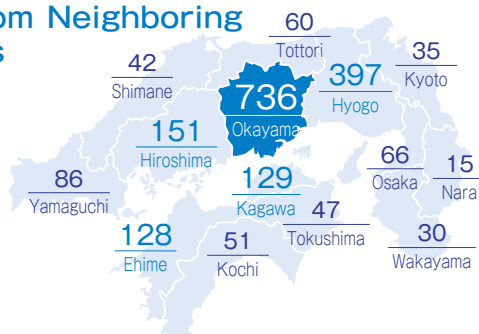
Admission Status

Undergraduate
Entrants

From Okayama **31.7%** From Outside of Okayama **68.3%**

Male-to-Female Ratio **55:45**

Number of Students
Enrolled from Neighboring
Prefectures



Okayama University Hospital

Okayama University Hospital offers state-of-the-art medical care, research and education systems

Beds **853** Medicine **38** Dentistry **12**

University
Library



Largest Collection
in Okayama

Approximately **1.98** million volumes

E-Library Service

Approximately **85,000** e-journals, **31** databases

» For details, go to page 11.13.21.

Finance



Total budget of
about **75.7** billion JPY

Since becoming an incorporated national university in 2004, there has been an increase of about 22.5 billion JPY. An increase in self-income and external funds promotes the diversification of financial resources.

» For details, go to page 30.

OKAYAMA UNIVERSITY PROSPECTUS 2023

CONTENTS

Our Mission Statement	2
Academic Calendar	3
Historical Timeline	4
Organization Chart	6
Administrative Staff	7
Education & Research Organization	8
Facts & Figures	15
International Exchange	22
Finance	30
Facilities	32
Related Organization	33
Access	34
Campus Map	36

OUR MISSION STATEMENT

1 OUR MISSION

“Creating and fostering higher knowledge and wisdom”

How can we, the human race, develop and grow in a steady and sustainable manner for the sake of future generations? At Okayama University, we have the answer. It is imperative that we build up our knowledge in order to advance education and research. As a public institution of higher learning, we are committed to contributing to this advancement by providing a positive environment for the creation of higher knowledge through research and the passing on of wisdom to younger generations through education and community service.

2 OUR PURPOSE

“Building up a new paradigm for a sustainable world”

As one of the leading universities in Japan, we aim to create and establish a new paradigm for the sustainable development of the world. We are being confronted with problems of global proportions in terms of the environment, energy issues, food supplies, economics, health, security and education. Thus, we are constantly seeking ways for humans to co-exist in harmony with nature. With this in mind, our university offers a wide range of academic fields, which are the basis of our integrated graduate schools. This not only allows us to conduct the most advanced and up-to-date research, but also provides an enriching educational experience.

3 OUR GOALS

(1) For education

Okayama University's most important mission is to provide an enriching educational environment for our students. Our commitment to each and every student is to offer them meaningful interaction with the university faculty and staff, whether it be in classroom settings or one-on-one tutorials. In this way, we hope to develop graduates who can think critically and logically and who can contribute to society.

(2) For research

We believe that the research we engage in is a fundamental basis for the innovation and creativity in this university. We are striving to become one of the leading research institutions of Japan and the world.

(3) For society

As an institution of higher learning, Okayama University creates a wide range of knowledge and technologies which can be used to help solve the problems of society and we interact with the outside community.

(4) For administration

To achieve our goals in research and education by the highly efficient management system, we can make even better use of the resources from our own faculties, staff, and facilities.

(5) For self-evaluation

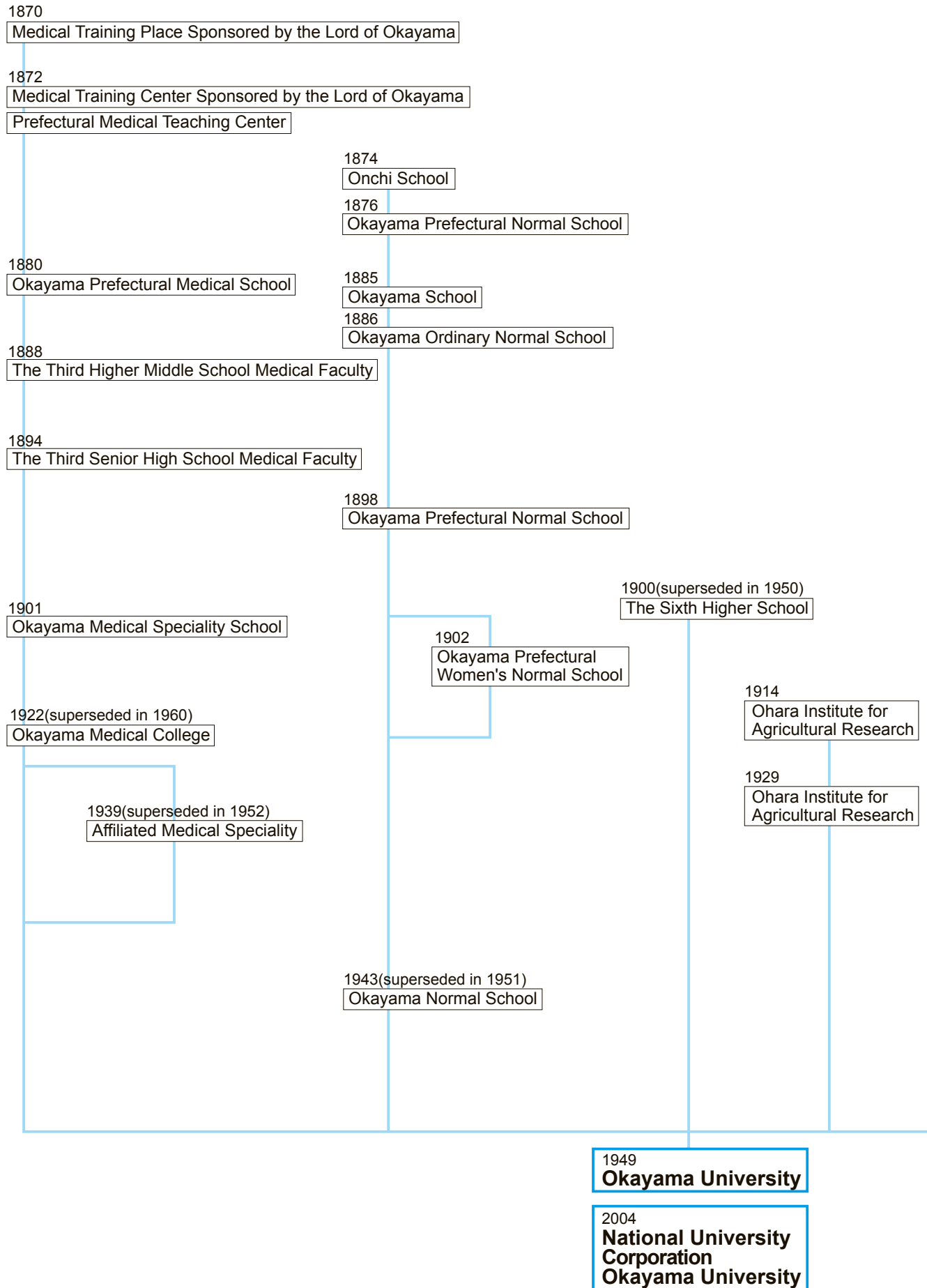
To provide accountability as a public institution, we constantly evaluate our work in research, education, our contribution to society, and university management. The results of these evaluations are taken into account for future university reform.



ACADEMIC CALENDAR

April 1	Academic Year begins. First Term begins. First Semester begins.
April 2	Entrance Ceremony
June 8	First Term ends.
June 9	Second Term begins.
August 10	Second Term ends.
August 11	Summer Vacation (until September 30)
September 25	Graduation Ceremony
September 30	First Semester ends.
October 1	Third Term begins. Second Semester begins.
October 2	Autumn Entrance Ceremony
October 22	University Anniversary
November 30	Third Term ends.
December 1	Fourth Term begins.
December 25	Winter Vacation (until January 4)
February 14	Fourth Term ends.
February 15	Spring Vacation (until March 31)
March 25	Graduation Ceremony
March 31	Second Semester ends. Academic Year ends.

HISTORICAL TIMELINE





Okayama Medical College



The Sixth Higher School



Okayama Prefectural Normal School



Opening Ceremony of Okayama University (Oct. 22, 1949)



Okayama University Tsushima Campus (1963)

1922

Okayama Prefectural School for Training Teachers of Vocational Supplementary School

1924

Okayama Prefectural School for Training Teachers of Girls' Vocational Supplementary School

1935

Okayama School for Training Teachers of Youth's School

1936

Okayama Prefectural School for Training Teachers of Girls' School

1939

Misasa Hot Spring Rehabilitation Center

1943

Research Center for Radio-Balneology

1944(superseded in 1951)

Okayama Youth's Normal School

1946

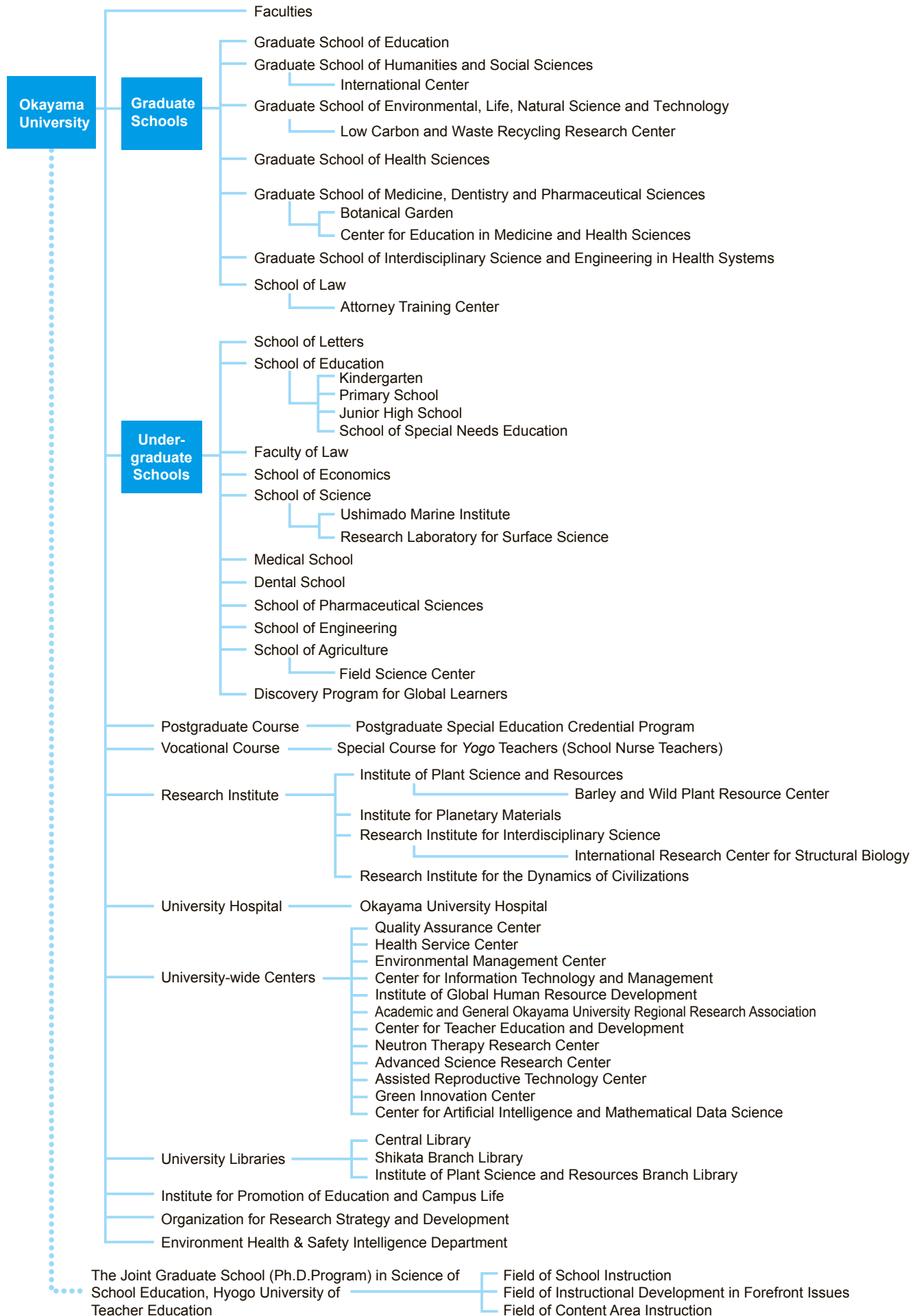
Okayama Agricultural College

1949(superseded in 1951)

Okayama Agricultural College

ORGANIZATION CHART

As of May 1, 2023





ADMINISTRATIVE STAFF

As of June 1, 2023

Executives		Graduate School of Medicine, Dentistry and Pharmaceutical Sciences	
President	NASU Yasutomo	Dean	NARUSE Keiji
Executive Director for Planning and General Affairs	MIMURA Yukari	Graduate School of Interdisciplinary Science and Engineering in Health Systems	
Executive Director for Academic Affairs / Senior Vice President	SUGA Seiji	Dean	YOKOHIRA Tokumi
Executive Director for Hospital and Medical Service	MAEDA Yoshinobu	School of Law	
Executive Director for Finance and Facilities / Secretary General	SODEYAMA Yoshiyuki	Dean	SUZUKI Takamoto
Executive Director for Promotion of Digital Transformation and Green Transformation / Senior Vice President	ABE Masanobu	School of Letters	
Executive Director for Regional co-creation	SATO Kenro	Dean	TANAKA Tomoko
Executive Director for Well-being management	FUJIWARA Keiko	School of Education	
Inspector	MATSUMOTO Mitsuo	Dean	TAKASE Atsushi
Inspector	OHARA Akane	Faculty of Law	
Vice Executive Director	SATO Goro	Dean	KUROKAMI Naozumi
Vice Executive Director	KANO Mitsunobu	School of Economics	
Vice Executive Director	ISHIDA Mamoru	Dean	FURUMATSU Noriko
Vice Executive Director	SATOH Norito	School of Science	
Vice Executive Director	KUBOKI Takuo	Dean	ICHIOKA Masanori
Vice Executive Director	YUSA Toru	Medical School	
Vice Executive Director	MIMURA Satoshi	Dean	TOYOOKA Shinichi
Vice Executive Director	HAYASHI Yasuhiko	Dental School	
Vice Executive Director	NOGAMI Yasuyuki	Dean	OHARA Naoya
Vice Executive Director	AYANO Toshiki	School of Pharmaceutical Sciences	
Vice Executive Director	NARUSE Keiji	Dean	KANO Mitsunobu
Vice President	SATOH Norito	School of Engineering	
Vice President	KAGA Masaru	Dean	NANBA Tokuro
Vice President	MIMURA Satoshi	School of Environmental Science and Technology	
Vice President	YOKOI Atsufumi	Dean	NANBA Tokuro
Vice President	TANAKA Gaku	School of Agriculture	
Vice President	SUZUKI Takayoshi	Dean	GOTO Tanjuro
Graduate School of Education		Discovery Program for Global Learners	
Dean	TAKASE Atsushi	Director	SUGA Seiji
Graduate School of Humanities and Social Sciences		Institute of Plant Science and Resources	
Dean	YUSA Toru	Director	HIRAYAMA Takashi
Graduate School of Natural and Technology		Institute for Planetary Materials	
Dean	TSURUTA Kenji	Director	YOSHINO Takashi
Graduate School of Environmental, Life, Natural Science and Technology		Research Institute for Interdisciplinary Science	
Dean	TSURUTA Kenji	Director	SHEN Jian-Ren
Graduate School of Health Sciences		Research Institute for the Dynamics of Civilizations	
Dean	HIROHATA Satoshi	Director	MATSUMOTO Naoko
Graduate School of Environmental and Life Science		University Hospital	
Dean	TSURUTA Kenji	Director	MAEDA Yoshinobu

EDUCATION & RESEARCH ORGANIZATION

GRADUATE SCHOOLS

As of May 1, 2023

Graduate School of Education

Master's Course	Educational Science
-----------------	---------------------

Graduate School of Humanities and Social Sciences

Master's Course	International Society Japanese and Asian Culture Human Socio-Culture Legal and Political Theory Economic Theory and Policy Management Sciences
Doctor's Course	Socio-Cultural Sciences

Graduate School of Environmental, Life, Natural Science and Technology

Master's Course	Environmental, Life, Natural Science and Technology
Doctor's Course	Environmental, Life, Natural Science and Technology

Graduate School of Health Sciences

Master's Course	Health Sciences
Doctor's Course	Health Sciences

Graduate School of Medicine, Dentistry and Pharmaceutical Sciences

Master's Course	Medical and Dental Sciences Pharmaceutical Sciences
Doctor's Course	Medicine, Dentistry and Pharmaceutical Sciences

Graduate School of Interdisciplinary Science and Engineering in Health Systems

Master's Course	Interdisciplinary Science and Engineering in Health Systems
Doctor's Course	Interdisciplinary Science and Engineering in Health Systems

Graduate School of Education

Professional Degree Course	Teaching and School Leadership
----------------------------	--------------------------------

School of Law

Professional Degree Course	School of Law
----------------------------	---------------

The Joint Graduate School (Ph.D.Program) in Science of School Education, Hyogo University of Teacher Education

Doctor's Course	Field of School Instruction Field of Instructional Development in Forefront Issues Field of Content Area Instruction
-----------------	--

UNDERGRADUATE SCHOOLS

As of May 1, 2023

School of Letters (1 Department 5 Subjects)

- Department of Humanities

School of Education (2 Courses 17 Subjects)

- Training Course for School Teachers
- Training Course for Yogo Teachers (Nursing Teachers)

Faculty of Law (1 Department 4 Subjects)

- Department of Law (including Evening Course)

School of Economics (1 Department 4 Subjects)

- Department of Economics (including Evening Course)

School of Science (5 Departments 5 Subjects)

- Department of Mathematics
- Department of Physics
- Department of Chemistry
- Department of Biology
- Department of Earth Sciences

Medical School (2 Faculties 20 Subjects)

- Faculty of Medicine
- Faculty of Health Sciences

Dental School (1 Faculty 5 Subjects)

- Faculty of Dentistry

School of Pharmaceutical Sciences (2 Departments 2 Subjects)

- Department of Pharmacy
- Department of Pharmaceutical Technology

School of Engineering (1 Department 10 Subjects)

- Department of Engineering for Sustainable Development

School of Agriculture (1 Department 4 Subjects)

- Department of Agricultural Sciences

Discovery Program for Global Learners

The Discovery Program for Global Learners offers an interdisciplinary education that crosses traditional departmental divisions. Students develop a personalized curriculum that matches their academic and career goals under the close guidance of an academic advisor. The Discovery Program aims to nurture inspiring young leaders who will take active roles on the global stage. Graduates of the Discovery Program earn a Bachelor of Arts and Sciences Degree.

POSTGRADUATE COURSE, VOCATIONAL COURSE

Postgraduate Special Education Credential Program

Special Course for Yogo Teachers (School Nurse Teachers)

RESEARCH INSTITUTE

Institute of Plant Science and Resources (IPSR)

Institute of Plant Science and Resources was originally established in 1914 as the “Ohara Institute for Agricultural Research” with the aim of advancing the agricultural sciences. The founder was Magosaburo Ohara, a major figure in the modernization of Okayama. In 1952, the institute became affiliated with Okayama University and was renamed the “Institute for Agricultural Biology”. In 1988, the Institute was renamed the “Research Institute for Bioresources”. On April 1, 2010, the institute was renamed the “Institute of Plant Science and Resources” (IPSR) as a joint usage/research center for scientists in Japan. IPSR comprises Atmospheric Stress unit, Soil Stress unit, Biotic Stress unit, Genetic Resources unit, and Applied Genomics unit under two research areas (Research Core for Plant Stress Science and Research Core for Future Crops) and one research center (Barley and Wild Plant Resource Center). The institute's current scientific mission is to develop new crops that will be suited for multiple stress environments and to promote agricultural production in stress affected areas worldwide.

Institute for Planetary Materials (IPM)

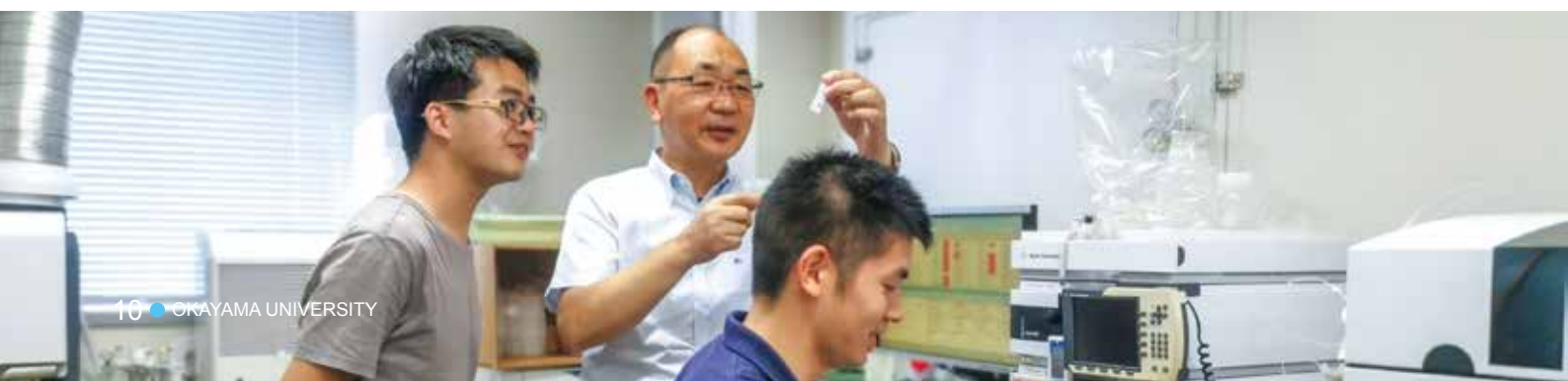
Institute for Planetary Materials (IPM) was established in April 2016 through reorganization of the Institute for Study of Earth's Interior. IPM is located at Misasa, Tottori. IPM is a world-class research institution in the field of Earth and planetary materials science with a range of experimental facilities and analytical expertise. The institute has research divisions: “Basic Planetary Materials”; “Planetary Systems Science”; and, “Astrobiology”. The institute is promoting research programs in Earth and planetary materials science including those related to the origin of life, as well as interdisciplinary research and the development of new research fields. The institute has also been promoting education of next-generation researchers via a 5-year doctoral program within the Graduate School of Natural Science and Technology, the Blue Planets Special Course at the Graduate School of Environmental, Life, Natural Science and Technology, and the Misasa International Student Internship Program.

Research Institute for Interdisciplinary Science (RIIS)

Research Institute for Interdisciplinary Science (RIIS) was established in April 2016, to study physics and fundamental biological science with an extensively interdisciplinary approach. In particular, RIIS investigates neutrino physics using laser spectroscopy, the structure and mechanism of natural photosynthesis and the fabrication of artificial photosynthesis systems, new functional materials for future electronic devices, the design of superconducting materials with a high superconducting critical temperature, and the theoretical elucidation of the properties of energy storage materials. Furthermore, RIIS aims at producing new functional materials and devices through interdisciplinary collaboration by physicists, mathematicians, chemists, and biologists. In April 1, 2023, RIIS established an International Structural Biology Center as an attachment center, to which not only the researchers related to the structural biology within RIIS but also over the university joined. RIIS will introduce a cryo-electron microscope within 2023, and the new structural biology center will make use of the new cryo-electron microscope jointly with other techniques and researchers from within the university as well as outside of the university, to advance structural biology and related researches.

Research Institute for the Dynamics of Civilizations (RIDC)

The Research Institute for the Dynamics of Civilizations (RIDC) was established in April 2021 by reorganizing the Center for Research on the Dynamics of Civilizations, formerly attached to the Graduate School of Humanities and Social Sciences. RIDC is an interdisciplinary research hub centered primarily on the humanities and social sciences, including archaeology, history, anthropology, economics, sociology, and philosophy, that aims to facilitate close collaboration with researchers in various scientific fields at Okayama University and other institutions in Japan and abroad. Since 2022, the institute has been organized into the Research Division and the Cultural Heritage Management Division, and is also responsible for conducting excavation of and research on the archaeological sites on campus. The Research Division has three research cores: the Fundamental Science of Civilizations Research Core, the Social Dynamics Research Core, and the Regional Dynamics Research Core. RIDC aims to contribute to the construction of a sustainable society by clarifying the complex dynamics of how social organizations, technologies, beliefs, economics, and the arts are interrelated and how they change the way people live.





UNIVERSITY HOSPITAL

As of May 1, 2023

Medicine

General Medicine	Gastroenterology and Hepatology	Hematology and Oncology
Allergy and Respiratory Medicine	Kidney, Diabetes and Endocrine Diseases	Rheumatic Diseases
Cardiovascular Medicine	Neurology and Stroke	Infectious Diseases
Gastroenterological Surgery	Hepato-Biliary-Pancreatic Surgery	General Thoracic Surgery
Breast and Endocrine Surgery	Urology	Cardiovascular Surgery
Pediatric Surgery	Pediatric Cardiovascular Surgery	Orthopaedic Surgery
Plastic Surgery	Dermatology	Ophthalmology
Otolaryngology - Head and Neck Surgery	Neuropsychiatry	Neurological Surgery
Anesthesiology and Resuscitology	Pediatrics	Pediatric Cardiology
Child Neurology	Pediatric Hematology and Oncology	Pediatric Anesthesiology
Pediatric Radiology	Child Psychosomatic Medicine	Obstetrics and Gynecology
Radiology	Emergency and Critical Care Medicine	Anatomic Pathology
Palliative and Supportive Care	Clinical Genetics and Genomic Medicine	

Dentistry

Division of Dentistry

Comprehensive Dentistry	Operative Dentistry	Periodontics and Endodontics
Oral Rehabilitation and Implantology	Prosthodontics	Preventive Dentistry
Oral Diagnosis and Dentomaxillofacial Radiology	Dental Anesthesiology	

Oral and Maxillofacial Surgery

Oral and Maxillofacial Reconstructive Surgery	Oral and Maxillofacial Surgery
--	--------------------------------

Orthodontics

Pediatric Dentistry

UNIVERSITY-WIDE CENTERS

Quality Assurance Center

Health Service Center

Environmental Management Center

Center for Information Technology and Management

Institute of Global Human Resource Development

Academic and General Okayama University Regional Research Association

Center for Teacher Education and Development

Neutron Therapy Research Center

Advanced Science Research Center

Assisted Reproductive Technology Center

Green Innovation Center

Center for Artificial Intelligence and Mathematical Data Science





UNIVERSITY LIBRARIES

Books

As of May 1, 2023

Classification	Japanese and Chinese Books	Foreign Books	Total
Central Library	1,120,473	466,951	1,587,424
Shikata Branch Library	113,074	101,942	215,016
Institute of Plant Science and Resources Branch Library	77,454	91,634	169,088
The Institute for Planetary Materials Branch Library	584	4,559	5,143
Grand Total	1,311,585	665,086	1,976,671

The Ikeda Family Collection (Ikedake Bunko)

The Central Library houses the Ikeda Family Collection (Ikedake Bunko) which contains records and documents of the Ikeda clan, the feudal lords of Okayama from 1632 to 1871. The collection consists of an archive of about 100,000 legislative documents, Japanese classics, and Chinese classics. The collection is well known as a source of primary materials for research on the Shogunate government and clan governments during the Edo period.



Map of Bizen Province(1596-1615.
Okayama Castle can be seen in the lower left)

JOINT USAGE / RESEARCH CENTER

Institute of Plant Science and Resources (IPSR)

Institute of Plant Science and Resources (IPSR) is serving as a nationwide "Joint Usage/Research Center" for plant genetic resources and stress science. It is focused on research of plant responses and adaptation to variable stress conditions using plant genetic resources developed at the institute. IPSR annually manages research projects from outside the institute and makes its advanced research equipment and instruments available for such "Joint Usage/Research Center" projects. IPSR also has a new guesthouse as accommodation for visiting researchers.

Institute for Planetary Materials (IPM)

Institute for Planetary Materials (IPM) was designated as a Joint Usage/Research Center in "Planetary Material Science" by the Minister of Education, Culture, Sports, Science and Technology (MEXT) in 2022 based on its achievements as a "Nationwide Joint Usage Center" and "Joint Usage/Research Center" up to then. The Institute provides opportunities to a large number of domestic and international researchers and students to access its internationally unique comprehensive analytical and experimental facility and expertise to conduct research in Earth and planetary materials science and to develop new fields via approaches such as chemical analysis, dating, structural analysis, and high-temperature and high-pressure experiments. The Institute is also strengthening collaboration with domestic and international research institutes, and actively contributing to analyses of extraterrestrial samples and data from international sample return missions such as Hayabusa2 and OSIRIS-REx.

JOINT USAGE / EDUCATION CENTER

Ushimado Marine Institute

Ushimado Marine Institute has been selected as a "joint-use/collaboration center" in the field of experimental, integrative biology and as a leading center-of-excellence among the marine stations in Japan by the Ministry of Education, Sports, Culture, Science and Technology, since April 2011.

ORGANIZATION

Institute for Promotion of Education and Campus Life

Organization for Research Strategy and Development (ORSD)

Environment Health & Safety Intelligence Department



FACTS & FIGURES

STAFF

As of May 1, 2023

		Classification	Total
President	1	Professors	418
Executive Directors	7	Associate Professors	358
Inspectors	2	Senior Assistant Professors	91
Total	10	Assistant Professors	315
		Research Associates	6
		Teachers	100
		Clerical Employees	1,283
		Technical Employees	
		Total	2,571

STUDENTS

Graduate Schools Grand Total 3,104

Master's Course

As of May 1, 2023

Classification	Admitted Total	Classification	Admitted Total
Graduate School of Education		Graduate School of Environmental and Life Science	
Educational Science	96	Social Engineering and Environmental Management	42
Sub Total	96	Biological and Human Environment	22
Graduate School of Humanities and Social Sciences		Sustainability of Resources	35
International Society	24	Science for Bioresources	27
Japanese and Asian Culture	36	Science for Bio-Production	49
Human Socio-Culture	67	Sub Total	175
Legal and Political Theory	29	Graduate School of Medicine, Dentistry and Pharmaceutical Sciences	
Economic Theory and Policy	11	Medical and Dental Sciences	40
Management Sciences	32	Sub Total	40
Sub Total	199	Graduate School of Medicine, Dentistry and Pharmaceutical Sciences	
Graduate School of Natural Science and Technology		Pharmaceutical Sciences	76
Mathematics and Physics	32	Sub Total	76
Molecular Sciences	29	Graduate School of Interdisciplinary Science and Engineering in Health Systems	
Biological Science	19	Interdisciplinary Science and Engineering in Health Systems	170
Earth Science	12	Sub Total	170
Mechanical and Systems Engineering	111	Total	1,732
Electronic and Information System Engineering	108		
Applied Chemistry	62		
Sub Total	373		
Graduate School of Environmental, Life, Natural Science and Technology			
Environmental, Life, Natural Science and Technology	543		
Sub Total	543		
Graduate School of Health Sciences			
Health Sciences	60		
Sub Total	60		

Doctor's Course

Classification	Admitted Total
Graduate School of Humanities and Social Sciences	
Socio-Cultural Sciences	76
Sub Total	76
Graduate School of Natural Science and Technology	
Earth and Planetary Materials Science	6
Sub Total	6
Graduate School of Natural Science and Technology	
Mathematics and Physics	8
Earth, Life, and Molecular Sciences	20
Interdisciplinary Science	20
Industrial Innovation Sciences	54
Applied Chemistry	18
Sub Total	120
Graduate School of Environmental, Life, Natural Science and Technology	
Environmental Life Natural Science and Technology	44
Sub Total	44
Graduate School of Health Sciences	
Health Sciences	59
Sub Total	59
Graduate School of Environmental and Life Science	
Environmental Science	58
Agricultural and Life Science	61
Sub Total	119
Graduate School of Medicine, Dentistry and Pharmaceutical Sciences	
Medicine, Dentistry and Pharmaceutical Sciences	131
Biophysiological Sciences	123
Biopathological Sciences	321
Science of Functional Recovery and Reconstruction	125
Social and Environmental Sciences	61
Sub Total	761
Graduate School of Medicine, Dentistry and Pharmaceutical Sciences	
Pharmaceutical Sciences	13
Sub Total	13

Classification	Admitted Total
Graduate School of Interdisciplinary Science and Engineering in Health Systems	
Interdisciplinary Science and Engineering in Health Systems	54
Sub Total	54
Total	1,252

Professional Degree Course

Classification	Admitted Total
Graduate School of Education	
Teaching and School Leadership	64
School of Law	56
Total	120
Grand Total	3,104

The Joint Graduate School (Ph.D.Program) in Science of School Education, Hyogo University of Teacher Education (Doctor's Course)

Classification	Admitted Total
Field of School Instruction	16
Field of Instructional Development in Forefront Issues	2
Field of Content Area Instruction	16
Sub Total	34



Undergraduate Schools

Grand Total 10,121

As of May 1, 2023

Classification	Admitted Total
School of Letters	
Department of Humanities	773
Sub Total	773
School of Education	
Training Course for School Teachers	1,019
Training Course for Yogo Teachers (Nursing Teachers)	122
Sub Total	1,141
Faculty of Law	
Department of Law (Day Time Course)	852
Department of Law (Evening Course)	91
Sub Total	943
School of Economics	
Department of Economics (Day Time Course)	867
Department of Economics (Evening Course)	187
Sub Total	1,054
School of Science	
Department of Mathematics	97
Department of Physics	172
Department of Chemistry	146
Department of Biology	142
Department of Earth Sciences	114
Sub Total	671
Medical School	
Faculty of Medicine	701
Faculty of Health Sciences	636
Sub Total	1,337
Dental School	
Faculty of Dentistry	312
Sub Total	312

Classification	Admitted Total
School of Pharmaceutical Sciences	
Department of Pharmacy	249
Department of Pharmaceutical Technology	174
Sub Total	423
School of Engineering	
Department of Mechanical and Systems Engineering	219
Department of Electrical and Communication Engineering	135
Department of Information Technology	82
Department of Applied Chemistry and Biotechnology	161
Department of Engineering	1,925
Sub Total	2,522
School of Environmental Science and Technology	
Department of Environmental and Mathematical Sciences	25
Department of Environmental and Civil Engineering	62
Department of Environmental Management Engineering	50
Department of Environmental Chemistry and Materials	48
Sub Total	185
School of Agriculture	
Department of Agricultural Sciences	519
Sub Total	519
Discovery Program for Global Learners	241
Sub Total	241
Total	10,121

ATTACHED SCHOOLS

As of May 1, 2023

Classification	Classes	Current Children Total
Primary School	18	606
Junior High School	15	536
School of Special Needs Education		
Primary	3	18
Junior	3	17
Senior	3	22
Kindergarten 3-Year Course	6	127

ENTRANTS

Graduate Schools

Classification	Date	Entrants Male	Female
Master's Course			
Graduate School of Education	2023.4	14	30
	2022.10	0	0
Graduate School of Humanities and Social Sciences	2023.4	35	43
	2022.10	9	14
Graduate School of Natural Science and Technology	2022.10	2	3
Graduate School of Environmental, Life, Natural Science and Technology	2023.4	453	90

Classification	Date	Entrants	
		Male	Female
Graduate School of Health Sciences	2023.4	7	23
Graduate School of Environmental and Life Science	2022.10	8	7
Graduate School of Medicine, Dentistry and Pharmaceutical Sciences	2023.4	30	21
	2022.10	0	1
Graduate School of Interdisciplinary Science and Engineering in Health Systems	2023.4	58	23
	2022.10	0	2
Sub Total		616	257
		873	
■ Doctor's Course			
Graduate School of Humanities and Social Sciences	2023.4	8	4
	2022.10	3	3
Graduate School of Natural Science and Technology	2022.10	12	6
Graduate School of Environmental, Life, Natural Science and Technology	2023.4	25	19
Graduate School of Health Sciences	2023.4	4	5
Graduate School of Environmental and Life Science	2022.10	12	12
Graduate School of Medicine, Dentistry and Pharmaceutical Sciences	2023.4	93	43
	2022.10	16	16
Graduate School of Interdisciplinary Science and Engineering in Health Systems	2023.4	6	6
	2022.10	3	1
Sub Total		182	115
		297	
■ Professional Degree Course			
Graduate School of Education		22	10
School of Law		11	13
Sub Total		33	23
		56	
Total		1,226	
The Joint Graduate School (Ph.D.Program) in Science of School Education, Hyogo University of Teacher Education		3	5

Note: The number in the column of the "The Joint Graduate School in Science of School Education, Hyogo University of Teacher Education" represents students from Okayama University.

Undergraduate Schools

Fiscal Year 2023

Classification	Entrants	
	Male	Female
School of Letters	66	115
School of Education	92	198
Faculty of Law		
Law (Day Time Course)	90	122
Law (Evening Course)	9	11
School of Economics		
Economics (Day Time Course)	130	78
Economics (Evening Course)	23	20
School of Science	117	31
Medical School		
Faculty of Medicine	71	38
Faculty of Health Sciences	26	134
Dental School	17	31
School of Pharmaceutical Sciences		
Pharmacy	14	31
Pharmaceutical Technology	25	16
School of Engineering	525	107
School of Agriculture	58	71
Discovery Program for Global Learners		
(2023,4)	11	19
(2022,10)	10	18
Total		1,284
		1,040
		2,324

DESTINATIONS OF 2022 GRADUATES

Graduate Schools

As of May 1, 2023

Classification	Graduates	Advanced to Graduate Schools	Employees
Master's Course			
Graduate School of Education	37(22)	3(2)	26(15)
Graduate School of Humanities and Social Sciences	80(40)	12(6)	43(21)
Graduate School of Natural Science and Technology	349(49)	18(7)	311(35)
Graduate School of Health Sciences	27(15)	2	25(15)
Graduate School of Environmental and Life Science	170(61)	14(4)	137(46)
Graduate School of Medicine, Dentistry and Pharmaceutical Sciences	37(10)	11(3)	25(6)
Graduate School of Interdisciplinary Science and Engineering in Health Systems	79(14)	6(3)	70(10)
Total	779(211)	66(25)	637(148)
Doctor's Course			
Graduate School of Humanities and Social Sciences	13(6)		4(3)
Graduate School of Natural Science and Technology	41(11)		28(5)
Graduate School of Health Sciences	10(9)		10(9)
Graduate School of Environmental and Life Science	25(8)		17(5)
Graduate School of Medicine, Dentistry and Pharmaceutical Sciences	123(35)	1	85(18)
Graduate School of Interdisciplinary Science and Engineering in Health Systems	11(3)		8(2)
Total	223(72)	1	152(42)
Professional Degree Course			
Graduate School of Education	25(9)	1	24(9)
School of Law	12(6)		1
Total	37(15)	1	25(9)
Total	1,039(298)	68(25)	814(199)
Doctor's Course			
The Joint Graduate School (Ph.D.Program) in Science of School Education, Hyogo University of Teacher Education	19(7)	0	19(7)

Note 1: Brackets, "()", indicate female students.

Note 2: "Graduates" includes students who stayed in graduate school longer than the standard term of study and withdrew from the school with the required credits.

Note 3: "The Joint Graduate School in Science of School Education, Hyogo University of Teacher Education" means students of Okayama University.

Undergraduate Schools

As of May 1, 2023

Classification	Graduates	Advanced to Graduate Schools	Medical Residents	Employees
School of Letters	157(109)	23(16)		120(86)
School of Education	279(180)	31(10)		230(161)
Faculty of Law				
Law (Day Time Course)	201(105)	33(16)		157(83)
Law (Evening Course)	18(11)	4(2)		11(7)
School of Economics				
Economics (Day Time Course)	208(74)	3(1)		164(60)
Economics (Evening Course)	36(20)			21(11)
School of Science	161(32)	101(20)		55(12)
Medical School				
Faculty of Medicine	124(30)		119(29)	
Faculty of Health Sciences	152(128)	25(18)		121(109)
Dental School	55(34)		38(23)	
School of Pharmaceutical Sciences				
Pharmacy	37(26)	1		36(26)
Pharmaceutical Technology	35(8)	32(7)		1
School of Engineering	479(76)	342(42)		122(31)
School of Environmental Science and Technology	154(31)	73(6)		78(23)
School of Agriculture	119(57)	67(26)		43(26)
Matching Program Course	1			1
Discovery Program for Global Learners	43(28)	11(10)		24(14)
Total	2,259(949)	746(174)	157(52)	1,184(649)

Note : Brackets, "()", indicate female students.

SCHOLARSHIP RECIPIENTS

Graduate Schools

As of May 1, 2023

Classification	Japan Student Services Organization		Local Public Bodies, etc.	Total
	Scholarship I (Loan with No Interest)	Scholarship II (Loan with Interest)		
■ Master's Course				
Graduate School of Education	10	1		11
Graduate School of Humanities and Social Sciences	14	2	2	18
Graduate School of Natural Science and Technology	122	12	12	146
Graduate School of Environmental, Life, Natural Science and Technology	111	6	6	123
Graduate School of Health Sciences	9		3	12
Graduate School of Environmental and Life Science	35	2	4	41
Graduate School of Medicine, Dentistry and Pharmaceutical Sciences	16	3	6	25
Graduate School of Interdisciplinary Science and Engineering in Health Systems	34	5	3	42
■ Doctor's Course				
Graduate School of Humanities and Social Sciences	3	1		4
Graduate School of Natural Science and Technology	4	1	2	7
Graduate School of Environmental, Life, Natural Science and Technology	1		11	12
Graduate School of Health Sciences	1		3	4
Graduate School of Environmental and Life Science	4		4	8
Graduate School of Medicine, Dentistry and Pharmaceutical Sciences	11	1	17	29
Graduate School of Interdisciplinary Science and Engineering in Health Systems	1		2	3
■ Professional Degree Course				
Graduate School of Education	6	1	1	8
School of Law	9	4	6	19
Total	391	39	82	512

Undergraduate Schools

As of May 1, 2023

Classification	Japan Student Services Organization			Local Public Bodies, etc.	Total
	Scholarship I (Loan with No Interest)	Scholarship II (Loan with Interest)	Scholarship		
School of Letters	118	102	70	3	293
School of Education	201	150	95	11	457
Faculty of Law					
Law (Day Time Course)	127	99	76	8	310
Law (Evening Course)	11	9	16		36
School of Economics					
Economics (Day Time Course)	168	110	80	5	363
Economics (Evening Course)	39	19	36	1	95
School of Science	96	83	46		225
Medical School					
Faculty of Medicine	49	58	28	2	137
Faculty of Health Sciences	106	79	43	6	234
Dental School	25	28	12	2	67
School of Pharmaceutical Sciences					
Pharmacy	42	28	20	4	94
Pharmaceutical Technology	36	27	14		77
School of Engineering	389	302	189	8	888
School of Environmental Science and Technology	28	29	8	2	67
School of Agriculture	65	58	32	1	156
Discovery Program for Global Learners	14	14	30		58
Total	1,514	1,195	795	53	3,557

DEGREES CONFERRED

As of March 25, 2023

Classification	Master's Degrees	Doctor's Degrees		Professional Degrees	Doctor's Degrees in Old System
		Course Doctorate	Dissertation Doctorate		
Cultural Sciences	57	18	2		
Public Policy	42				
Philosophy	217	708	91		
Arts / Letters	1,395	111	9		
Arts in Education	2,482				
Law	497	22	6		
Economics	436	41	2		
Business Administration	186	6			
Science	3,594	421	69		
Medical Science		3,170	3,830		
Medical Science	359				
Public Health	31				
Nursing Science	227	21	3		
Health Sciences	296	88	8		
Dental Science		734	93		
Dental Science	40				
Pharmaceutical Sciences	1,566	276	139		
Pharmaceutical Science / Pharmaceutical Sciences	387	26	14		
Engineering	10,119	727	163		
Environmental Science and Technology	484	13	2		
Environmental Science	1,293	119	7		
Agriculture	2,851	355	111		
Science in Interdisciplinary studies / Philosophy	314	22	2		
Master of Education				343	
Juris Doctor				429	
Total	26,873	6,878	4,551	772	

※ Excluding post graduate

UNIVERSITY HOSPITAL

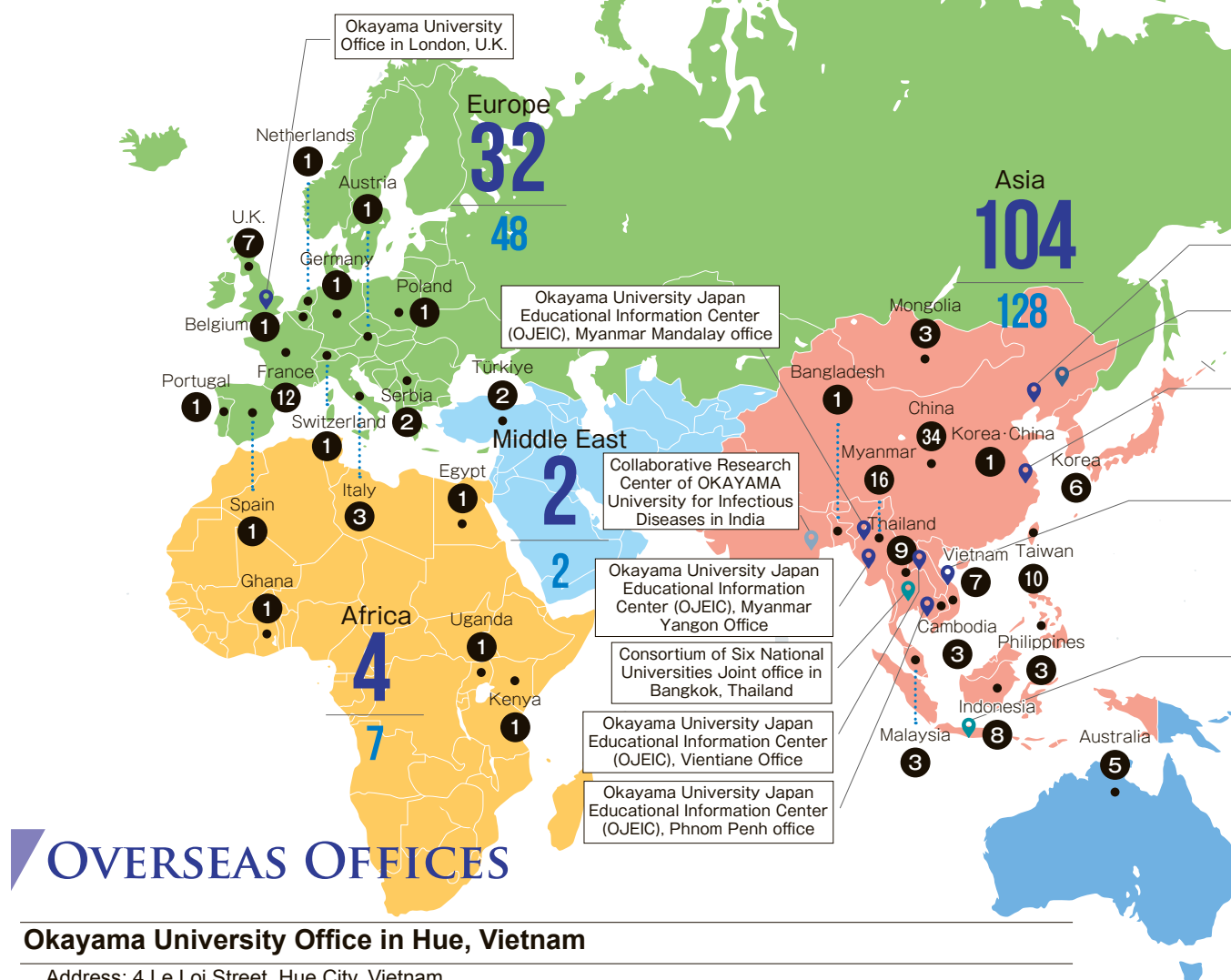
Beds and Patients

Fiscal Year 2022

Clinics	Beds	Patients per day	
		Inpatients	Outpatients
Medicine	834	536	1,679
Dentistry	19	15	483
Total	853	551	2,162

INTERNATIONAL EXCHANGE

DISTRIBUTION OF INTERNATIONAL PARTNERS



OVERSEAS OFFICES

Okayama University Office in Hue, Vietnam

Address: 4 Le Loi Street, Hue City, Vietnam
Tel: +84-234-3834480

Okayama University Office in Changchun, Shenyang and Shanghai, China

Okayama University Office in Changchun
Address: 2555 Jingyue St, Jingyue, Changchun, Jilin 130117, P. R. China
Tel: +86-155-4328-8200

Okayama University Office in Shenyang
Address: 77 Puhe Road, Shenyang North New Area, Shenyang, Liaoning 110122, P.R. China
Tel: +81-86-251-7036 (International Affairs Department)

Okayama University Office in Shanghai
Address: 516 Jun Gong Road, Shanghai 200093, P. R. China
Tel: +86-138-1673-5412

Okayama University Office in London, U.K.

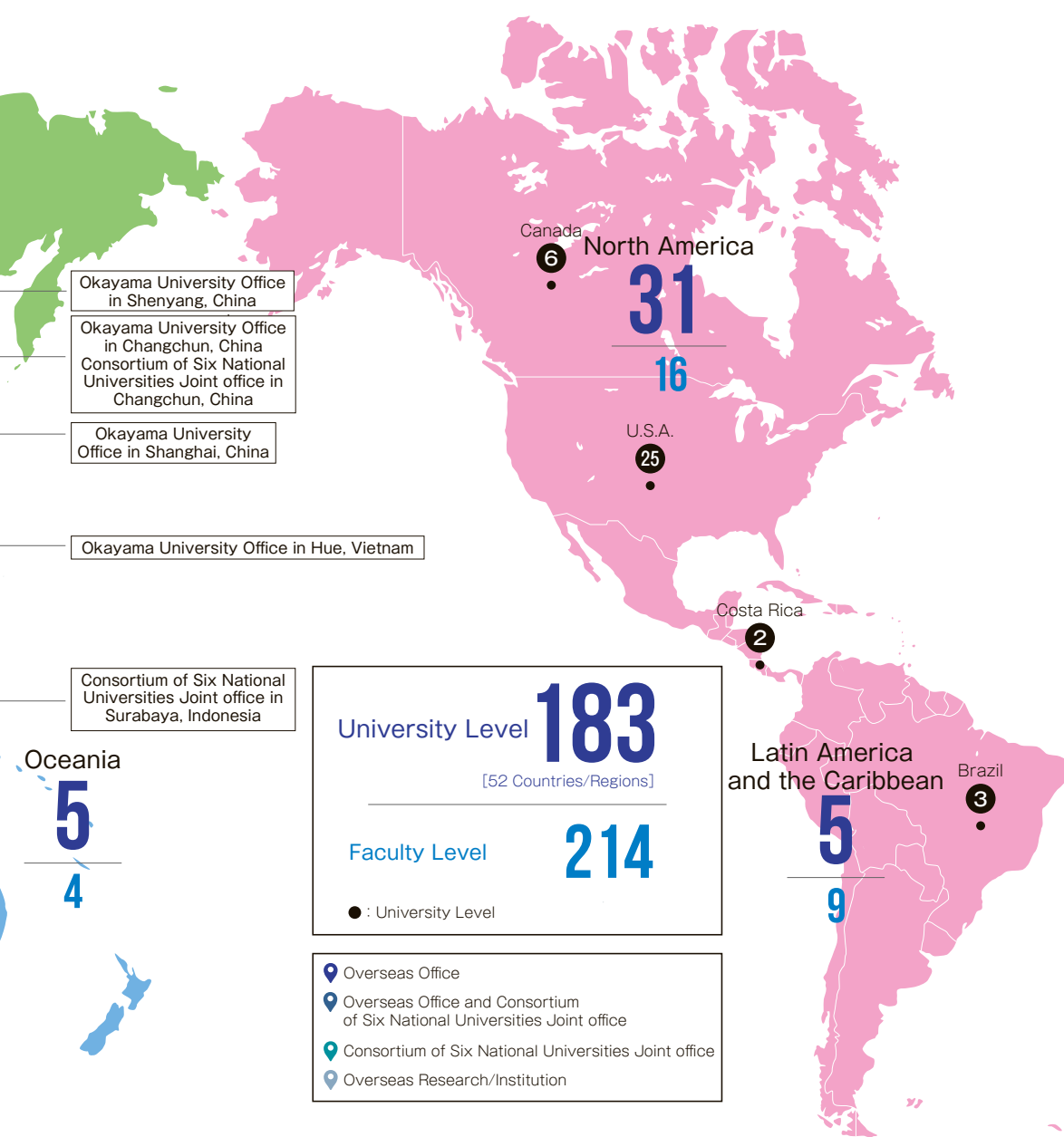
Address: 10 Throgmorton Avenue, London, EC2N 2DL, U.K.
Tel: +44-20-7330-1764

Okayama University Japan Educational Information Center (OJEIC), Myanmar Yangon Office

Address: The Japan Foundation, Yangon, 1st Floor, No.70, Nat Mauk Lane (1), Bahan Township, Yangon, Myanmar
Tel: +95-92-6184-1054

Okayama University Japan Educational Information Center (OJEIC), Myanmar Mandalay Office

Address: MABA Office, 1st Floor, Room 3, Block 1, Unit #6, Water Street, Mingalar Mandalay, Chan Mya Thar Si Township, Mandalay, Myanmar
Tel: +95-94-5934-3340



Okayama University Japan Educational Information Center (OJEIC), Phnom Penh Office

Address: Sakura room01, Cambodia-Japan Cooperation Center (CJCC), RUPP-CJCC, Russian Federation Blvd (110), Tuol Kork, Phnom Penh, 120404, Cambodia
Tel: +855-(0)937-38410, +855-(0)937-38420

Okayama University Japan Educational Information Center (OJEIC), Vientiane Office

Address: Seminar room 1, Laos-Japan Human Resource Development Institute (LJI), National University of Laos, Dongdok Campus, Vientiane, Lao PDR
Tel: +856-(0)20-5759-0255

Collaborative Research Center of OKAYAMA University for Infectious Diseases in India

Address: 57 Dr. S.C.Banerjee Road, Beliaghata Kolkata 700010 National Institute of Cholera and Enteric Diseases JICA Building ID Hospital Campus, India
Tel: +91-90-0716-7386

In addition, the consortium of six national universities (Chiba University, Niigata University, Kanazawa University, Okayama University, Nagasaki University, Kumamoto University) operates the joint offices in Changchun in China, Bangkok in Thailand, and Surabaya in Indonesia.

LIST OF INTERNATIONAL PARTNERS

University Level 183

Country/Region	Universities / Institutions
Asia	
Bangladesh	Bangladesh Agricultural University
Cambodia	National Institute of Education Cambodia
	Royal University of Phnom Penh
	Ministry of Labour and Vocational Training, Department of Occupational Safety and Health, Kingdom of Cambodia
China	Northeast Normal University
	Inner Mongolia Agricultural University
	Zhengzhou University
	Kunming Institute of Botany, Chinese Academy of Sciences
	Dalian Polytechnic University
	University of Science and Technology, LiaoNing
	Tongji University
	China Medical University
	Harbin Medical University
	Dalian Medical University
	Jilin University
	Beijing Information Science & Technology University
	University of Shanghai for Science and Technology
	Henan University of Science and Technology
	Inner Mongolia University
	Capital Normal University
	Changchun University of Science and Technology
	Shaanxi Normal University
	Harbin Engineering University
	East China University of Political Science and Law
	Yanbian University
	Sun Yat-sen University
	Jilin Huaqiao Foreign Languages Institute
	Southern Medical University
	Beijing Foreign Studies University
	Hebei Medical University
	China University of Political Science and Law
	Northeastern University
	Tianjin Central Hospital of Gynecology Obstetrics
	Zhejiang University of Technology
	Zhejiang Gongshang University
	Beijing Institute of Technology
	Xi'an International Studies University
	Lanzhou University
China/Korea	Shanghai University of Traditional Chinese Medicine / Wonkwang University*
Indonesia	Bogor Agricultural University
	Hasanuddin University
	Gadjah Mada University
	Andalas University
	University of Indonesia
	Institut Teknologi Sepuluh Nopember
	Padjadjaran University
Philippines	Indonesia University of Education
	Ateneo de Manila University
	University of San Carlos
Korea	University of Philippines
	Gwangju Institute of Science and Technology
	Sungkyunkwan University
	Korea University
	Kangwon National University
	Chonnam National University
	Asia-Pacific Centre of Education for International Understanding (APCEIU)
Malaysia	University of Technology, Malaysia

Country/Region	Universities / Institutions
	University of Malaya
	University Putra Malaysia
Mongolia	Mongolian University of Life Sciences
	National University of Mongolia
Myanmar	Mongolian National University of Education
	Department of Medical Science and Department of Medical Research (Lower Myanmar), Ministry of Health
	Mandalay Technological University
	Yangon Technological University
	University of Nursing, Yangon
	University of Medicine 1, Yangon
	Patheingyi University
	University of Medicine 2, Yangon
	Department of Food and Drug Administration, Ministry of Health, Myanmar
	Department of Higher Education, Ministry of Education, Myanmar
	University of Technology (Yatanarpon Cyber City)
	University of Information Technology
	University of Medicine, Magway
	Yangon University of Economics
	University of Computer Studies, Mandalay
Taiwan	Department of Medical Services, Ministry of Health and Sports, Myanmar
	University of Medicine, Mandalay
	National Taiwan University
	National Taipei University of Technology
	Kainan University
	National Chung Hsing University
	Fu Jen Catholic University
	Chang Gung University
	National University of Kaohsiung
	Kaohsiung Medical University
	Tam Kang University
	National Dong Hwa University
Thailand	Mahidol University
	Maejo University
	Kasetsart University
	Chulalongkorn University
	Prince of Songkla University
	Chiang Mai University
	Thammasat University
	King Mongkut's Institute of Technology Ladkrabang (KMUTL)
	King Mongkut's University of Technology Thonburi (KMUTT)
Vietnam	University of Dalat
	Hue University
	Hanoi University of Science and Technology
	Vietnam National University, Hanoi
	Hai Phong University of Medicine and Pharmacy
	Nong Lam University
	Hanoi Medical University
Africa	
Egypt	Cairo University
Ghana	University of Ghana
Kenya	Jomo Kenyatta University of Agriculture and Technology
Uganda	Makerere University
Americas	
Brazil	Universidade do Estado do Rio de Janeiro
	Universidade Paulista
	Universidade de Sao Paulo
Costa Rica	Earth Charter International (ECI)

Country/Region	Universities / Institutions
Canada	University for Peace
	University of Alberta
	Bishop's University
	Carleton University
	National Institute of Scientific Research
	The University of British Columbia
U.S.A.	York University
	San Jose State University
	California State University, East Bay
	The University of Kansas
	State University of New York at Stony Brook
	California State University, Fullerton
	Southern Oregon University
	The University of Maryland Baltimore
	Arizona State University
	University of Guam
	California State University, Monterey Bay
	University of Hawaii at Manoa
	University of Pittsburgh
	Chatham University
	Appalachian State University
	University of Northern Iowa
	Wayne State University
	Portland State University
	University of Missouri
	Dallas Baptist University
	Wichita State University
	The University of North Carolina at Greensboro
	California State University, Los Angeles
	The University of Rhode Island
	Shepherd University
	Tennessee Tech University

Europe	
Austria	International Atomic Energy Agency
Belgium	Ghent University
France	Sorbonne University
	University of Strasbourg
	Bordeaux Maigne University

Country/Region	Universities / Institutions
	Institut Polytechnique de Grenoble
	University of Bretagne Occidentale
	University of Clermont Auvergne
	Paul Sabatier University (Toulouse III)
	University of Poitiers
	National Polytechnic Institute of Toulous
	Paris-Saclay Univeristy
	CentraleSupélec (Paris-Saclay University)
	Universite Savoie Mont Blanc
Germany	Leibniz University of Hannover
Italy	Ca' Foscari University of Venice
	Sapienza University of Rome
	University of Torino
Netherlands	Rotterdam University of Applied Sciences
Poland	Adam Mickiewicz University
Portugal	University of Lisbon
Serbia	University of Novi Sad
	University of Belgrade
Spain	University of Murcia
Switzerland	United Nations Conference on Trade and Development (UNCTAD)
U.K.	The University of Sheffield
	Cardiff University
	University of Edinburgh
	University of East Anglia
	York St John University
	University of Surrey
	University of Kent

Middle East	
Turkey	Karadeniz Technical University
	Ege University

Oceania	
Australia	University of South Australia
	University of Adelaide
	University of Western Australia
	Southern Cross University
	Swinburne University of Technology

Note: Asterisk, "*", shows Tripartite Agreement.

Faculty Level 214 *Agreements have been made with multiple departments

Country/Region	Universities / Institutions
Asia	
Bangladesh	School of Science, Engineering and Technology, Khulna University
	Faculty of Engineering, University of Rajshahi
China	Bangabandhu Sheikh Mujibur Rahman Science & Technology University, Faculty of Engineering
	Peking Union Medical College, Chinese Academy of Medical Sciences
	Medical College of Nanchang University*
	School of Mechanical Engineering, Shanghai Jiao Tong University
	College of Materials Science and Chemical Engineering, Zhejiang University
	Department of Law, Peking University
	School of Stomatology, Peking University
	The College of Stomatology, Dalian Medical University
	College of Agriculture and Biotechnology, Zhejiang University
	College of Chemistry and Molecular Engineering, Peking University
	College of Materials, Xiamen University
	School of Economics, Central University of Finance and Economics
	College of Life Sciences, Peking University
	College of Forest, Agricultural University of Hebei
	College of Chemistry, Sichuan University

Country/Region	Universities / Institutions
	Xi'an Jiaotong University
	Institute of National Economy, Shanghai Academy of Social Sciences
	College of Economics, Zhejiang University
	College of Economics Management, College of Land Management, Huazhong Agricultural University
	Department of Chinese Language and Literature, Fudan University
	Shanghai Institute of Organic Chemistry, Chinese Academy of Sciences
	Peking University Health Science Center
	Department of Chemistry, Renmin University of China
	Dalian Institute of Chemical Physics, Chinese Academy of Sciences
	School of Korean Studies, Shandong University
	Department of Chemistry, Faculty of Science, The Chinese University of Hong Kong
	Faculty of Dentistry, The University of Hong Kong
	School of Political Science and Public Administration, Shandong University
	Fujian Institute of Research on the Structure of Matter, Chinese Academy of Sciences
	International Exchange and Cooperation Office, Qingdao University of Science & Technology
	School of Humanities, ZheJiang University

Country/Region	Universities / Institutions
	The Beijing Institute of Botany, Chinese Academy of Sciences
	School of Foreign Languages, Dalian Maritime University
	Jilin Academy of Social Sciences
	School of Mechanical Engineering, Tongji University
	School of Foreign Language, Jiangsu University of Technology
	School of Law, Shanghai Maritime University
	Zhejiang Provincial People's Hospital
	The State Key Laboratory of Geological Processes and Mineral Resources, China University of Geosciences (Wuhan)
	School of Stomatology Guilin Medical University
	College of Plant Protection, Northwest A & F University
	Hangzhou Normal University
	Root Biology Center, Fujian Agriculture and Forestry University
	Institute of Plant and Food Science, Southern University of Science and Technology
	College of Life Sciences, Shanghai Normal University
	School of Chemistry and School of Physics, Xi'an Jiaotong University
	School of International Studies, Zhejiang University
	Inner Mongolia Medical University Graduate School, Affiliated Hospital, School of Basic Medical Sciences, School of Pharmacy
	India
	School of Dentistry (ABSM Institute of Dental Sciences), Nitte University
	School of Life Sciences, University of Hyderabad
Indonesia	Amity University Kolkata
	Sister Nivedita University
	Sam Ratulangi University
	Faculty of Agriculture, University of Sriwijaya
	Graduate School of Natural Resources and Environment Management, University of Sumatera Utara
	Faculty of Civil and Environmental Engineering, Institute of Technology Bandung
	Faculty of Medicine, Udayana University
	Electronic Engineering Polytechnic Institute of Surabaya
	Faculty of Science, University of Brawijaya
	State Polytechnic of Malang
	Graduate School, Faculty of Engineering, University of Merdeka Malang
	Faculty of Dentistry, Gadjah Mada University
	Faculty of Dentistry, Hasanuddin University
	Faculty of Letters, Dr. Soetomo University
Korea	College of Medicine, Gyeongsang National University
	School of Dentistry, Seoul National University
	The College of Engineering and Sciences, Hanyang University
	College of Pharmacy and Division of Life and Pharmaceutical Sciences, Ewha Womans University
	School of International and Area studies, Kookmin University
	BK21 Plus Program, KU Open-Innovation Center, Konkuk University
	College of Engineering, Dankook University
	College of Engineering, Jeju National University
	Graduate School, Changwon National University
	Department of Nursing, Department of Clinical Laboratory Science and Department of Radiology, Catholic University of Pusan
	Department of Physics and Astronomy (Physics Major), College of Natural Sciences, Seoul National University
	University of Ulsan

Country/Region	Universities / Institutions
	Pusan National University, College of Engineering
	College of Business Administration, Kangwon National University
	Korean Language & Literature of Chonnam National University, Educational Research Group for the Development of Creative Convergence Future Talents in Local Language & Literature of Chonnam National University, The Institute of Korean Language and Literature in Chonnam National University
	Philippines
	School of Dentistry, Southwestern University
	Philippine Science High School(System)
Malaysia	Faculty of Dentistry, University of Malaya (UM)
	Universiti Tunku Abdul Rahman
	Faculty of Dentistry, Lincoln University College
	Faculty of Electrical & Electronics Engineering Technology, Universiti Malaysia Pahang
Mongolia	School of Dentistry, Mongolian National Medical University
Myanmar	University of Dental Medicine, Yangon
	University of Dental Medicine, Mandalay
Sri Lanka	Victoria General Hospital
	University of Ruhuna Faculty of Agriculture
Taiwan	The Open University of Sri Lanka
	College of Oral Medicine, Taipei Medical University
	Faculty of Technology, National Taiwan Normal University
	College of Law, National Chengchi University
	National Chiayi University College of Humanities and Arts
	Taichung Veterans General Hospital
	National Chung Cheng University College of Social Sciences, College of Law
	Chang Gung University, School of Medicine
	Institute of Plant and Microbial Biology, Academia Sinica
	Department of Medical Biotechnology and Laboratory Science, Chang Gung University
	National Chiayi University, College of Management
	College of The Art, National Dong Hwa University
	Thailand
	Srimahasarakham Nursing College
	Faculty of Science, Burapha University*
	Faculty of Science and Technology, Suan Sunandha Rajabhat University
	Vidyasirimedhi Institute of Science and Technology (VISTEC)
	Walailak University, School of Science
	Srinakharinwirot University , Faculty of Science
	Faculty of Pharmacy, Silpakorn University
Vietnam	Walailak University, School of Pharmacy
	Hue University of Agriculture and Forestry
	Cardiovascular Center - E Hospital, Hanoi
	Institute of Environmental Science and Engineering Hanoi University of Civil Engineering
	Danang University of Science and Technology
	School of Odonto-Stomatology, Hanoi Medical University
	Department of Science and Technology, the People's Committee of Dong Nai Province
	School of Economics, University of Economics Ho Chi Minh City
	An Giang University
	Dong Nai Bio-Technology Hi-Tech Park Authority
	Hanoi University of Natural Resources and Environment
	University of Technology and Education, The University of Da Nang
	Van Hien University
	Can Tho University Graduate School

Country/Region	Universities / Institutions
	Ho Chi Minh City University of Technology - Viet Nam National University Faculty of Environment and Natural Resources Faculty of Civil Engineering
Africa	
Egypt	Faculty of Education, Ain Shams University Faculty of Science, El-Minufiya University South Valley University
Ethiopia	Addis Ababa University, College of Natural and Computational Science
Kenya	International Livestock Research Institute
Nigeria	Faculty of Dentistry, Bayero University, Kano
Uganda	Uganda National Crops Resources Research Institute (NaCRRI)
Americas	
Brazil	School of Dentistry, University of Sao Paulo School of Dentistry of Ribeirao Preto, University of Sao Paulo Faculty of Dentistry, Ibirapuera University Institute of Geosciences, University of São Paulo
Canada	College of Dentistry, University of Saskatchewan College of Arts and Science, University of Saskatchewan Faculty of Dentistry, the University of British Columbia Faculty of Dentistry, University of Toronto Department of Earth Sciences, University of Western Ontario
Chile	Faculty of Dentistry, University of Finis Terrae Faculty of Dentistry, University of Chile Dental School, Faculty of Medicine, Catholic University of Chile Universidad De Los Lagos
U.S.A.	School of Dentistry, University of Washington College of Engineering and Computing, Missouri University of Science and Technology College of Science, University of Notre Dame University of Michigan Medical School College of Dentistry, The Ohio State University Department of Earth and Environmental Sciences, Lehigh University The University of Arkansas, Fayetteville College of Arts and Sciences, The Ohio State University Earth and Planets Laboratory, Carnegie Institution of Washington Boyce Thompson Institute for Plant Research University of California, Riverside
Guatemala	Centro de Investigaciones Arqueológicas y Antropológicas, Universidad del Valle de Guatemala
Europe	
Bulgaria	Faculty of Chemistry and Pharmacy, University of Sofia "St. Kl. Ohridski", Bulgaria
Czech	Faculty of Science, Charles University First Faculty of Medicine, Charles University Faculty of Medicine, Masaryk University Institute of Experimental Botany of the Czech Academy of Sciences
Denmark	Faculty of Science, University of Copenhagen Department of Electrical Engineering, Technical University of Denmark
Finland	Tampere University of Technology
France	Paris School of Neuroscience (ENP) École Polytechnique, Paris-Saclay University The Faculty of Science and Engineering, Sorbonne University University of Bordeaux, College of Science and Technology
Germany	Faculty of Chemistry, University of Konstanz Faculties of Humanities, Ruhr University of Bochum

Country/Region	Universities / Institutions
	Faculties of History and Cultural Studies, Free University of Berlin Faculty of Biology, University of Münster Faculties of Linguistic, Literary and Media Studies, Trier University The Faculty of Medicine, The Julius-Maximilians-University Würzburg Department of Biology, University of Münster Faculty of Environmental Sciences, Dresden University of Technology
Greece	School of Dentistry, Aristotle University of Thessaloniki
Hungary	Faculty of Medicine, University of Debrecen Faculty of Medicine, Semmelweis University
Italy	Department of Life, Health and Environmental Sciences, University of L'Aquila Faculty of Engineering, Roma Tre University Faculty of Veterinary Medicine, University of Teramo Faculty of Engineering, Marche Polytechnic University Department of Physics, The University of Naples Federico II Sapienza University of Rome University of Ferrara, Department of Physics and Earth Science
Kazakhstan	The Institute of Plant Biology and Biotechnology Institute for Natural Sciences and Geography, Abai Kazakh National Pedagogical University
Netherlands	Faculty of Humanities, Leiden University Delft University of Technology
Poland	Faculty of Civil and Environmental Engineering, Gdansk University of Technology Institute of Physics, Polish Academy of Sciences
Portugal	Faculty of Engineering, University of Porto
Romania	"Petru Poni" Institute of Macromolecular Chemistry, Institute of Excellence of Romanian Academy Faculty of Business and Administration, University of Bucharest
Russia	State Scientific Center of the Russian Federation, Institute of Biomedical Problems of the Russian Academy of Sciences Institute of Fundamental Medicine and Biology, Kazan Federal University State Academic University for Humanities
Spain	University of Salamanca
Switzerland	Swiss Federal Research Institute for Forest, Snow and Landscape WSL (Eidg. Forschungsanstalt für Wald, Schnee und Landschaft WSL)
U.K.	Dental School, University of Glasgow University of Exeter, College of Life and Environmental Sciences Faculty of Science, University of Strathclyde
Slovenia	Faculty of Education University of Ljubljana
Middle East	
Turkey	Institute of Social Science, Canakkale Onsekiz Mart University
Palestine	Faculty of Dentistry, Arab American University
Oceania	
Australia	University of Canberra School of Dentistry and Health Science, Charles Sturt University
New Zealand	Faculty of Dentistry, University of Otago The Health Sciences Division, University of Otago

Enrollment Numbers Country and Region

As of May 1, 2023

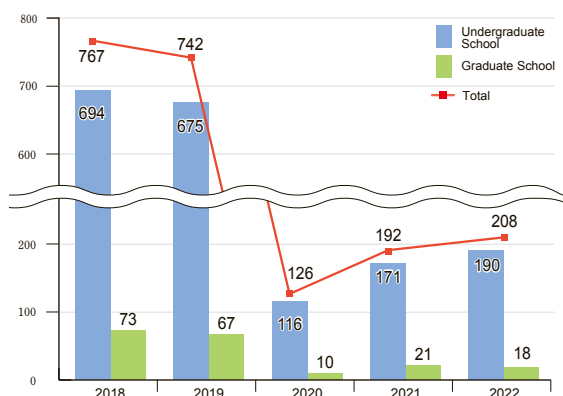
Classification	Graduate Students		Undergraduate Students	Research Students, etc.	Total
	Doctor's Course	Master's Course			
Asia					
China	175	211	37	89	512
Vietnam	36	8	16	1	61
Indonesia	24	5	10	1	40
Korea		1	29	4	34
Myanmar	19	2	6		27
Bangladesh	21	3	1		25
Malaysia	1	1	20		22
Thailand	2	3	3	5	13
Taiwan	1	3	1	8	13
Sri Lanka	4			3	7
India	3	1	1		5
Philippines	1		4		5
Mongolia	1			2	3
Cambodia			2	1	3
Laos		3			3
Pakistan		1			1
Nepal			1		1
Bhutan				1	1
Sub Total	288	242	131	115	776
Middle East					
Afghanistan	1	6			7
Iran	1				1
Turkey				1	1
Jordan	1				1
Saudi Arabia	1				1
Sub Total	4	6	0	1	11
Africa					
Ghana	3	3	2		8
Kenya	4		1		5
Nigeria	3		1		4
Ethiopia	2			1	3
Egypt	2				2
Sudan	1			1	2
Tunisia	2				2
Madagascar	1		1		2
Benin		2			2
Malawi		1	1		2
Liberia			1		1
Cameroon	1				1
Cote d'Ivoire		1			1
Morocco	1				1
Senegal			1		1
Uganda		1			1
South Africa			1		1
Mauritania			1		1
Rwanda	1				1
South Sudan			1		1
Sub Total	21	8	11	2	42
Oceania					
Australia				1	1
Sub Total	0	0	0	1	1
North America					
U.S.A.	3		4	13	20
Canada				1	1
Sub Total	3	0	4	14	21
Latin America and the Caribbean					
Peru	2	1	1		4
Nicaragua		1	1		2
Mexico	1				1
Brazil		1			1
Colombia				1	1
Trinidad and Tobago	1				1
Sub Total	4	3	2	1	10
Europe(including NIS)					
France	1			16	17
U.K.	1			7	8
Germany				7	7
Italy	1			4	5
Poland			2	1	3
Belgium				2	2
Russia	1		1		2
Croatia	1			1	2
Norway			1		1
Uzbekistan			1		1
Andorra				1	1
Serbia				1	1
Kyrgyz			1		1
Georgia				1	1
Sub Total	5	0	6	41	52
Total 66	325	259	154	175	913

Enrollment Numbers and Expenditure

Expenditure	Enrollment	Graduate Students		Undergraduate Students	Research Students, etc.	Total
		Doctor's Course	Master's Course			
Japanese Government Scholarship						
Nominated by Japanese Embassies		18	7	5	4	34
Nominated by Okayama University		90	5	13	5	113
The Japan-Korea Joint Exchange Program for Undergraduate Students in Science and Engineering (Japanese Government)				6		6
Sub Total		108	12	24	9	153
Private						
The Japan-Korea Joint Exchange Program for Undergraduate Students in Science and Engineering (Korean Government)				5		5
Malaysian Government				17		17
Private		217	247	108	166	738
Sub Total		217	247	130	166	760
Grand Total		325	259	154	175	913

STUDENTS STUDYING ABROAD FROM OKAYAMA UNIVERSITY

Japanese Students Studying Abroad



Note1: Based on the Top Global University Project Data.

Note2: Includes online program participants counted as the Top Global University Project Data from Fiscal Year 2020 onward.

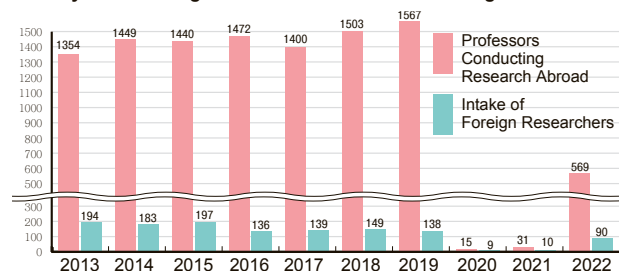
Student Numbers by Country and Duration

Fiscal Year 2022

Classification		within 6 months	more than 6 months	Total
Asia	Korea	26	1	27
	Malaysia	25		25
	Taiwan	19		19
	China	13		13
	Philippines	13		13
	Thailand	13	1	14
	Indonesia	8		8
	Sub Total	117	2	119
Oceania	Australia	3		3
	New Zealand	2		2
	Sub Total	5	0	5
North America	U.S.A.	35	4	39
	Canada	2		2
	Sub Total	37	4	41
Latin America and the Caribbean	Brazil	3		3
	Chile	2		2
	Costa Rica	1		1
	Sub Total	6	0	6
Europe	U.K.	26	1	27
	Germany	4		4
	Switzerland	2		2
	Spain	1		1
	Italy		1	1
	Belgium		1	1
	Poland		1	1
	Sub Total	33	4	37
Total		198	10	208

FACULTY CONDUCTING RESEARCH ABROAD AND VISITING RESEARCHERS

Faculty Conducting Research Abroad and Visiting Researchers



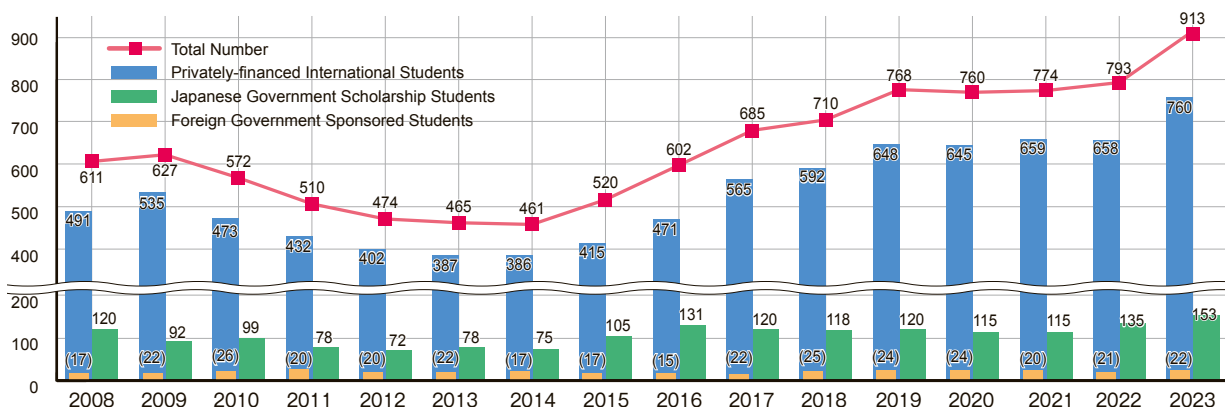
The Number of Faculty Conducting Research Abroad and Visiting Researchers by Region and Country

Fiscal Year 2022

Classification		Faculty Conducting Research Abroad	Visiting Researchers
Asia	Vietnam	43	11
	Korea	41	
	Cambodia	30	
	Thailand	29	
	Laos	20	
	Taiwan	15	3
	Malaysia	15	
	Indonesia	14	
	India	13	3
	China	6	9
	Others	14	4
	Sub Total	240	30
The Middle East		8	1
	Sub Total	8	1
Africa			18
Sub Total			18
Oceania	Australia	11	4
	Others	5	
	Sub Total	16	4
North America	U.S.A.	116	6
	Canada	11	1
	Sub Total	127	7
Latin America and the Caribbean	Mexico	1	3
	Others	4	1
	Sub Total	5	4
Europe (including NIS)	EU Members		
	France	29	8
	Germany	27	3
	Italy	17	4
	the Netherlands	12	
	Spain	10	1
	Others	38	5
	Non-EU Members		
	U.K.	31	2
	Switzerland	8	1
	Others	1	2
	Sub Total	173	26
Total		569	90

INTERNATIONAL STUDENTS STUDYING IN OKAYAMA UNIVERSITY

As of each May 1



Note 1: "Privately-financed International Students" includes Foreign Government Sponsored Students those whose acceptance has been informed via MEXT.

Note 2: "International Students" includes students of the Joint Graduate School in Science of School Education, Hyogo University of Teacher Education.

Financial Results / Budget

2022 Fiscal Year Revenue and Expenditure

Balance Sheet

March 31, 2023
(unit: million yen)

Assets 136,882	Land 51,589	Liabilities 42,554	Loans payable 19,021	
			Accounts payable 10,848	
			Donations 6,650	
			Other liabilities 6,035	
	Buildings 39,628	Net Assets 94,328	Capital stock 69,621	
				Machinery and fixtures 8,958
				Books 7,296
Cash and deposits 17,683				
Other assets 11,728				
		Capital surplus 1,794		
		Retained earnings 10,714		
		Unappropriated retained earnings 12,197		

Income Statement

April 1, 2022~March 31, 2023
(unit: million yen)

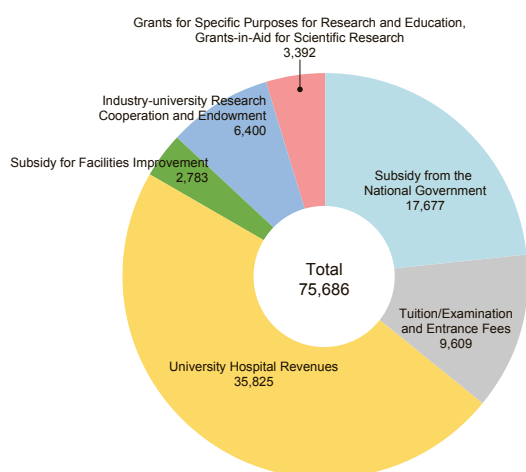
Ordinary expenses 73,074 + Extraordinary losses 1,904	Education 2,811	Ordinary revenue 73,998 + Nonrecurring income 12,197 + Reversal of reserve for special purpose 979	Operating grants 18,625
	Research 3,916		Tuition, admission and examination fees 7,825
	Medical service 24,826		University hospital 35,391
	Contracted research 3,301		Contracted research 4,047
	Personnel expenses 35,751	Donations 2,680	Other expenses 18,608
	Other expenses 4,374		
Gross profit 12,197			

Note 1: Amounts of less than one million yen are rounded down
Note 2: Subject to change until ministry approval.

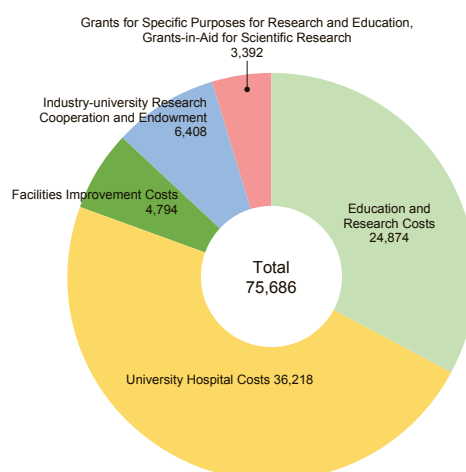
2023 Fiscal Year Budget

(unit: million yen)

Income



Expenditure



Grants-in-Aid for Scientific Research (KAKENHI)

Grants and Adoptions (Fiscal Year 2023)

As of April 1, 2023

Subject for Research	Adoptions	Thousand Yen
Grant-in-Aid for Specially Promoted Research	1	132,340
Grant-in-Aid for Scientific Research (S)	6	182,650
Grant-in-Aid for Scientific Research (A)	17	155,610
Grant-in-Aid for Scientific Research (B)	158	754,910
Grant-in-Aid for Scientific Research (C)	515	671,762
Grant-in-Aid for Challenging Research (Pioneering)	5	35,880
Challenging Research (Exploratory)	41	89,700
Grant-in-Aid for Early-Career Scientists	203	314,530
Grant-in-Aid for Research Activity Start-up	25	35,100
Grant-in-Aid for Scientific Research on Innovative Areas (Research in a proposed research area)	7	59,020
Grant-in-Aid for Transformative Research Areas	19	211,510
Fund for the Promotion of Joint International Research	18	54,210
Total	1,015	2,697,222

Note: The grants above include all overhead expenses.

Trends in Grants

Fiscal Year	2013	2014	2015	2016	2017	2018	2019	2020	2021	2022
Amount	2,215,276	2,228,337	2,131,650	2,392,540	2,402,305	2,134,663	2,361,015	2,335,450	2,585,570	2,697,222
Projects	863	832	865	875	899	885	927	970	952	1,015

Note: Amount in thousand yen.

Grant from Outside the University

Fiscal Year 2022

Classification	Number	Thousand Yen
Joint Research	381	586,981
Trust Research	270	2,010,930
Endowment	2,737	1,998,448

Note: "Endowment" includes foundations and endowed chairs.



FACILITIES

Accommodation for International Students and Researchers

Name of Accommodation		Capacity		Area (m ²)	Address
Kuwanoki Dormitory for International Students	North Wing	For Single Students *One barrier-free room is included.	51	1,455	6-1 Tsushima-Kuwanokicho, Kita-ku, Okayama
	South Wing	For Single Students	100	3,324	
Fukui Dormitory for International Students		For Single Students	21	825	2-10-4 Tsushimafukui, Kita-ku, Okayama
International House for International Students and Researchers	For International Students	For Single Students *8 shared rooms are included.	34	2,167	3-1-1 Tsushimanaka, Kita-ku, Okayama
	For Researchers	Married Researchers	12		
		Single Researchers (long-term)	3		
		Single Researchers (short-term)	30		
International Student Shared House		For Single Students (mixed functions) *1 room for Japanese student and 3 rooms for international students	120	2,310	6-2 Tsushima-Kuwanokicho, Kita-ku, Okayama

Accommodation for International Students and Researchers

Okayama University has four accommodations for international students and researchers: Kuwanoki Dormitory for International Students, Fukui Dormitory for International Students, International House for International Students and Researchers, and International Student Shared House which is for international and Japanese students.

These accommodations are established for the purpose of providing a place of residence for international students and researchers engaged in study and research at the university, and also contributing to the promotion of international exchange.

International Student Shared House was newly established in March 2016 with the aim of providing international and Japanese



International Student Shared House

students with a place to live and fostering global human resources who acquire an international sense by being exposed to foreign languages, cultures and lifestyles through their daily life. It has a form in which four students live together as a unit while keeping private rooms for each person, and is designed so that residents can interact with each other naturally.

All of the accommodations are located in convenient locations close to the Tsushima area, which is the center of the university, and students and researchers living there spend a fulfilling study and research life in a comfortable living environment.



Junko Fukutake Terrace

Junko Fukutake Hall and Junko Fukutake Terrace

Okayama University wishes to enhance the civic life of Okayama city by deepening the links between the citizens and the university community. One part of this integration has been the establishment of informal meeting places for citizens and the university community designed by the world famous Japanese architects SANAA. There is one at the Shikata campus, the Junko Fukutake Hall, and the other, the Junko Fukutake Terrace, is located at Tsushima campus. The Junko Fukutake Hall is a series of wooden triangular roofs that allow natural light making a bright, flexible space where concerts, lectures, and public events are often held. The Junko Fukutake Terrace is also a construction based on steel frames but with curving glass walls and an undulating roof. It serves as a cafe and sometimes a display space.



Junko Fukutake Hall

50th Anniversary Hall

Classification	Capacity
T·KANEMITSU HALL	406
Large meeting room	60
Medium meeting room	36
Small meeting room	24

Junko Fukutake Hall

Classification	Capacity
Lecture hall	354
Conference space	30

Junko Fukutake Terrace

Classification	Capacity
J Terrace Café	40

RELATED ORGANIZATION

The Consortium of Six National Universities in Japan

To enhance education and academic research and to develop joint educational programs, a group of national universities (Chiba University, Niigata University, Kanazawa University, Okayama University, Nagasaki University and Kumamoto University) organized The Consortium of Six National Universities in Japan.

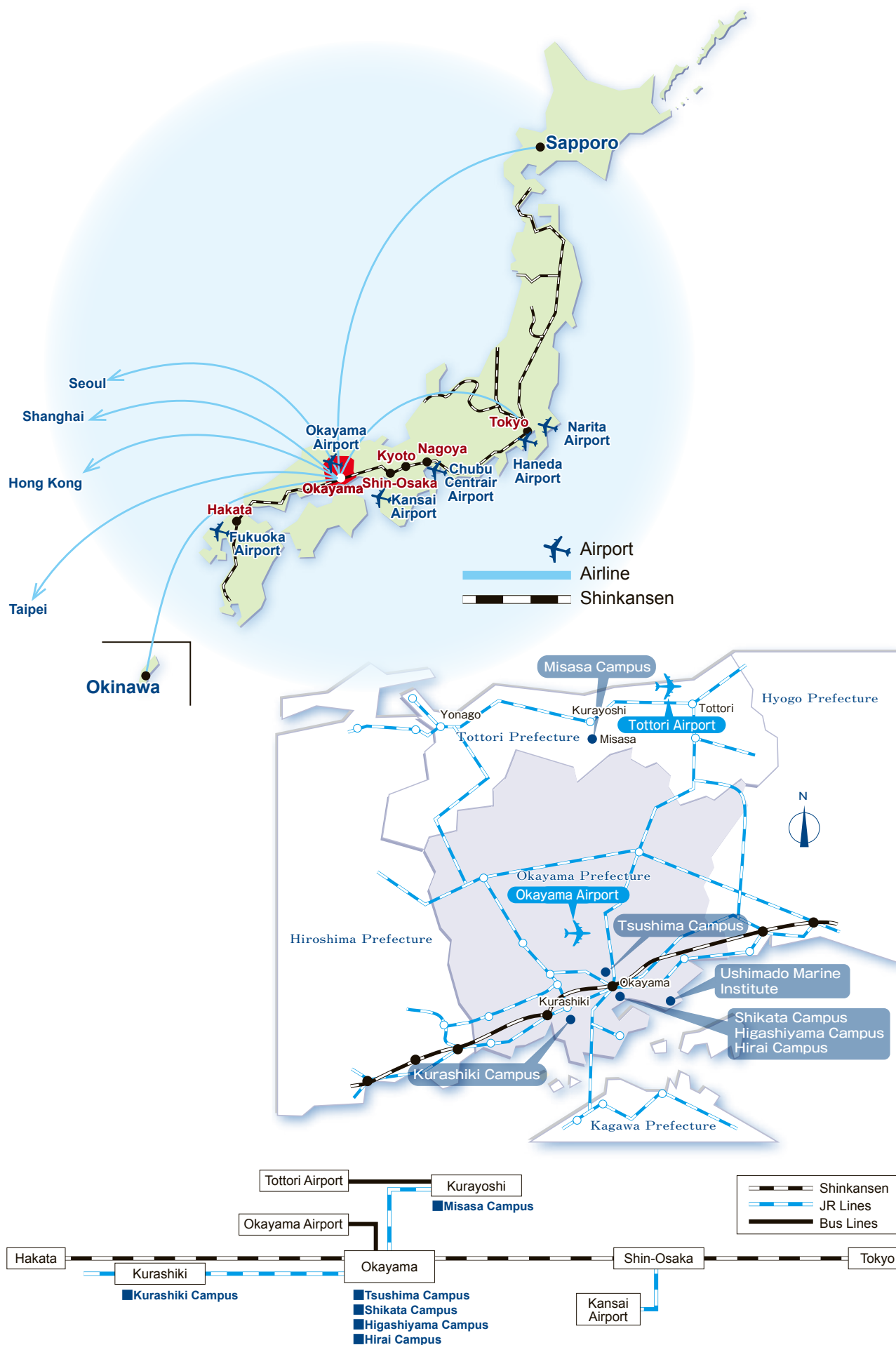


Okayama University Alumni

Okayama University Alumni, unlike the former alumni association centering on alumni only, was founded in October 2013, as network organization that supports the development of Okayama University as an “All Okadai” organization. Okayama University Alumni aims for the advancement of its members including everyone who has participated in the intellectual activities of Okayama University - not only alumni, but also currently enrolled students, current faculty staff, former faculty staff, international students, research students, and all other people who have been or are at present associated with Okayama University.



ACCESS



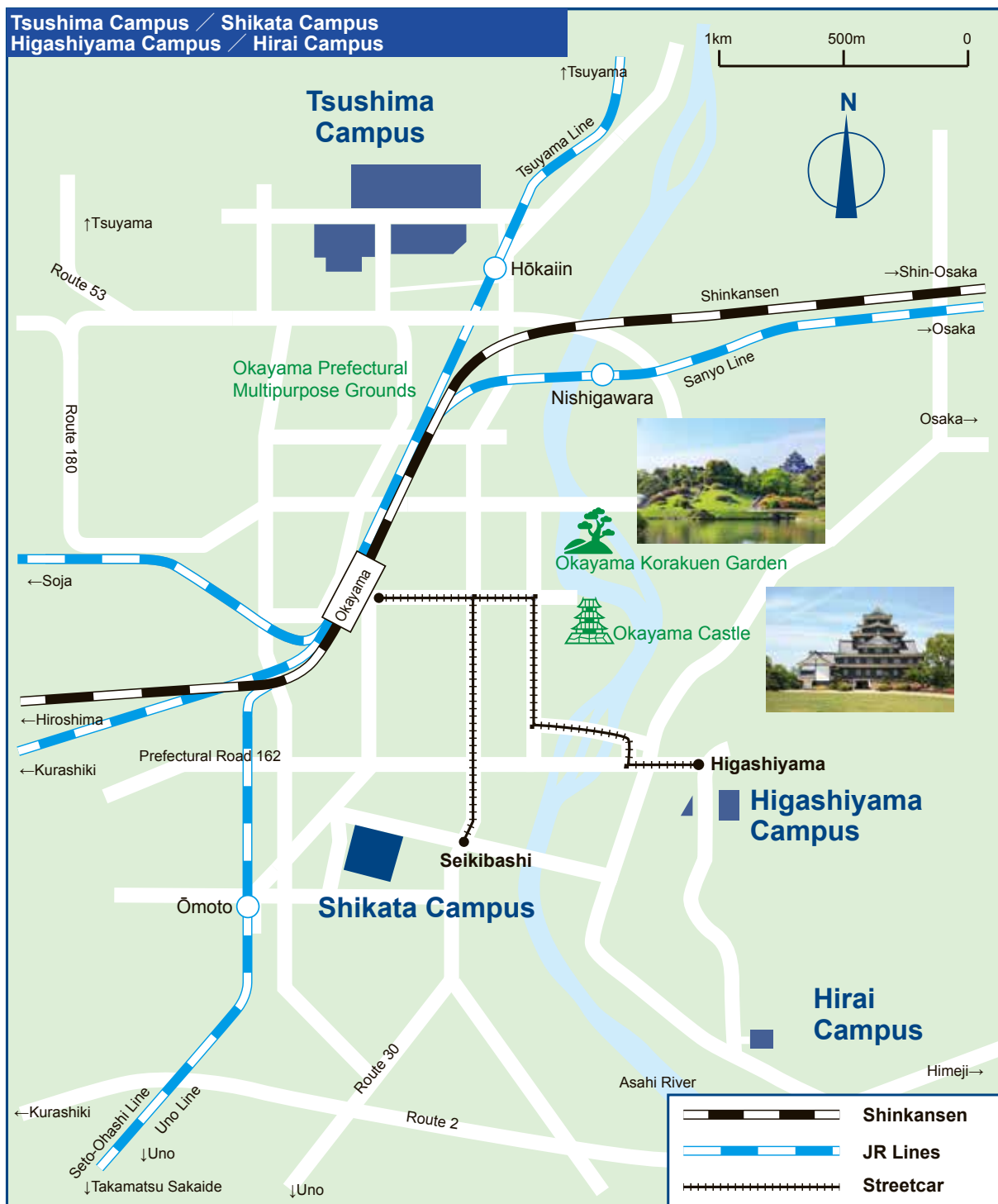
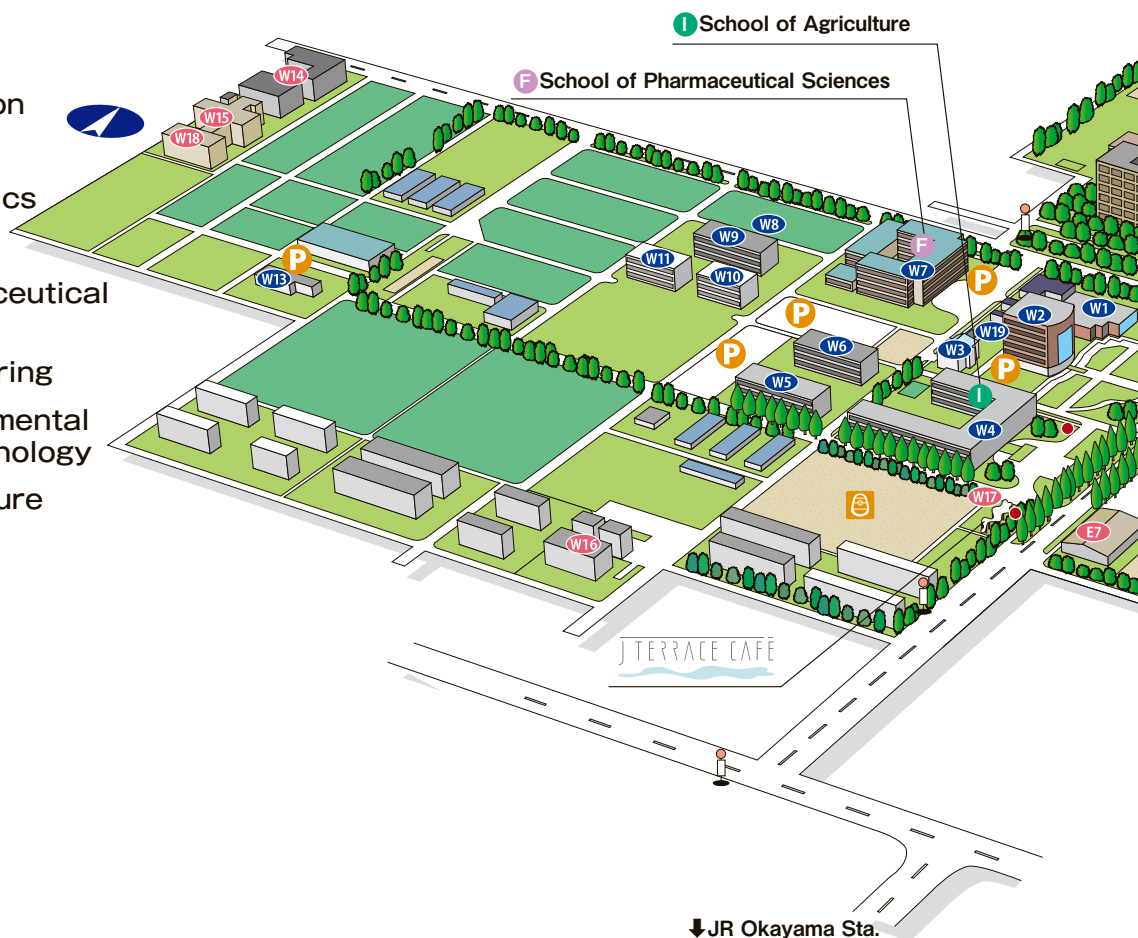


Photo provided by Okayama Prefectural Tourism Federation

Tsushima Campus

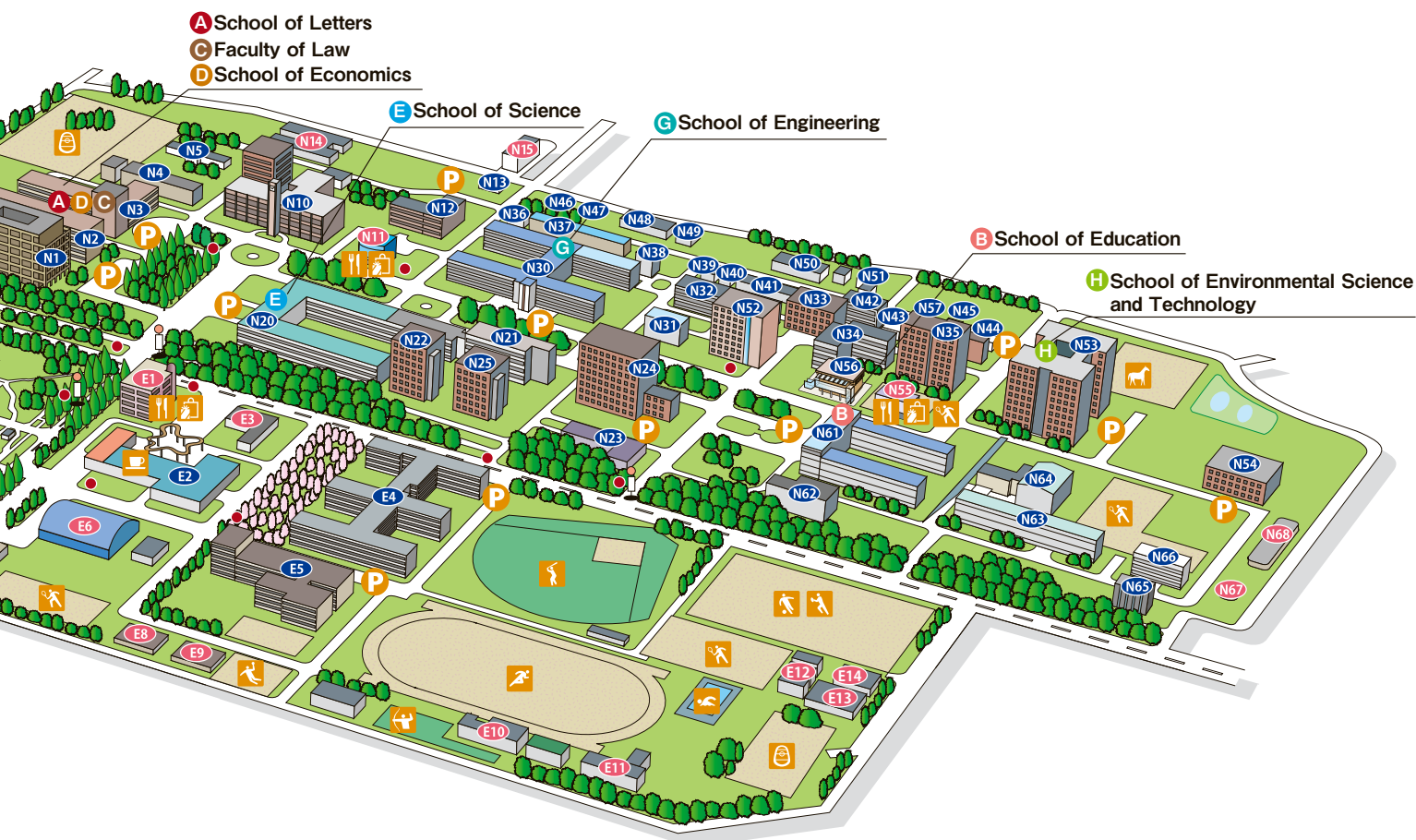
- A School of Letters
- B School of Education
- C Faculty of Law
- D School of Economics
- E School of Science
- F School of Pharmaceutical Sciences
- G School of Engineering
- H School of Environmental Science and Technology
- I School of Agriculture



Tsushima North Campus

N1	Humanities and Social Sciences General Research Building
	Graduate School of Humanities and Social Sciences
	School of Law
	Attorney Training Center
N2	School of Letters, Law, and Economics Building No.2
	Faculty of Law
	School of Economics
	Graduate School of Humanities and Social Sciences
N3	Graduate School of Interdisciplinary Science and Engineering in Health Systems
	School of Letters, Law, and Economics Building No. 1
	School of Letters
	Graduate School of Humanities and Social Sciences
	International Center
	Graduate School of Interdisciplinary Science and Engineering in Health Systems
	Research Institute for the Dynamics of Civilizations
N4	School of Letters, Law, and Economics Lecture Room Building
N5	Archaeological Museum
N10	University Library
N11	North Facility for Student Welfare(Muscat Union)
N12	Center for Information Technology and Management
N13	Research Institute for the Dynamics of Civilizations
N14	International House
N15	Fukui Dormitory for International Students
N20	School of Science Main Building
	School of Science
	Graduate School of Natural Science and Technology
	Graduate School of Environmental, Life, Natural Science and Technology
	Research Institute for Interdisciplinary Science
N21	School of Science Building No.2
	Research Laboratory for Surface Science
N22	Collaboration Center
	Department of Instrumental Analysis & Cryogenics, Advanced Science Research Center
N23	Department of Radiation Research, Tsushima Laboratory, Advanced Science Research Center
N24	Graduate School of Natural Science and Technology, Building No.1
	Graduate School of Natural Science and Technology
	Graduate School of Environmental, Life, Natural Science and Technology
	Graduate School of Interdisciplinary Science and Engineering in Health Systems
N25	Research Institute for Interdisciplinary Science Building

N30~N43 N45~N49	School of Engineering Building No.1~No.14・No.16~No.20
	School of Engineering
	Graduate School of Natural Science and Technology
	Graduate School of Environmental, Life, Natural Science and Technology
	Graduate School of Interdisciplinary Science and Engineering in Health Systems
N44	Former School of Engineering Building No.15
N50	Former School of Engineering Building No.21
	Department of Animal Resources, Tsushima North Laboratory, Advanced Science Research Center
N51	Environmental Management Center
N52	Graduate School of Natural Science and Technology, Building No.2
	Low Carbon and waste Recycling Research Center Green Innovation Center
N53	School of Environmental Science and Technology Building
	School of Environmental Science and Technology
	School of Engineering
	Graduate School of Environmental and Life Science
	Graduate School of Environmental, Life, Natural Science and Technology
N54	Research Center for Advanced Technology
N55	East Facility for Student Welfare(Plone Union)
N56	Okayama Visionary Commons(OUX)
N57	Research Laboratory Building School of Engineering
N61	School of Education Main Building
	School of Education
	Graduate School of Education
	Center for Teacher Education and Development
N62	School of Education Lecture Building
N63	School of Education East Building
N64	School of Education Gymnasium
N65~N66	School of Education Music Hall
N67	Archery Hall
N68	Horses House



Tsushima West Campus

W1	50th Anniversary Hall
	Administration Building
W2	Corporation Audit Office, Inspector Support Office
	Administrative Center of Okayama University
	Quality Assurance Center
	Environment Health & Safety Intelligence Department
W3	Former Administration Building
	Academic and General Okayama University Regional Research Association
W4-W6	Organization for Diversity Management
	School of Agriculture Building I ~ III
	School of Agriculture
	Graduate School of Environmental and Life Science
	Graduate School of Environmental, Life, Natural Science and Technology
W7	Assisted Reproductive Technology Center
	School of Pharmaceutical Sciences Building No.1 No.2
	School of Pharmaceutical Sciences
	Graduate School of Medicine, Dentistry and Pharmaceutical Sciences
	Graduate School of Interdisciplinary Science and Engineering in Health Systems

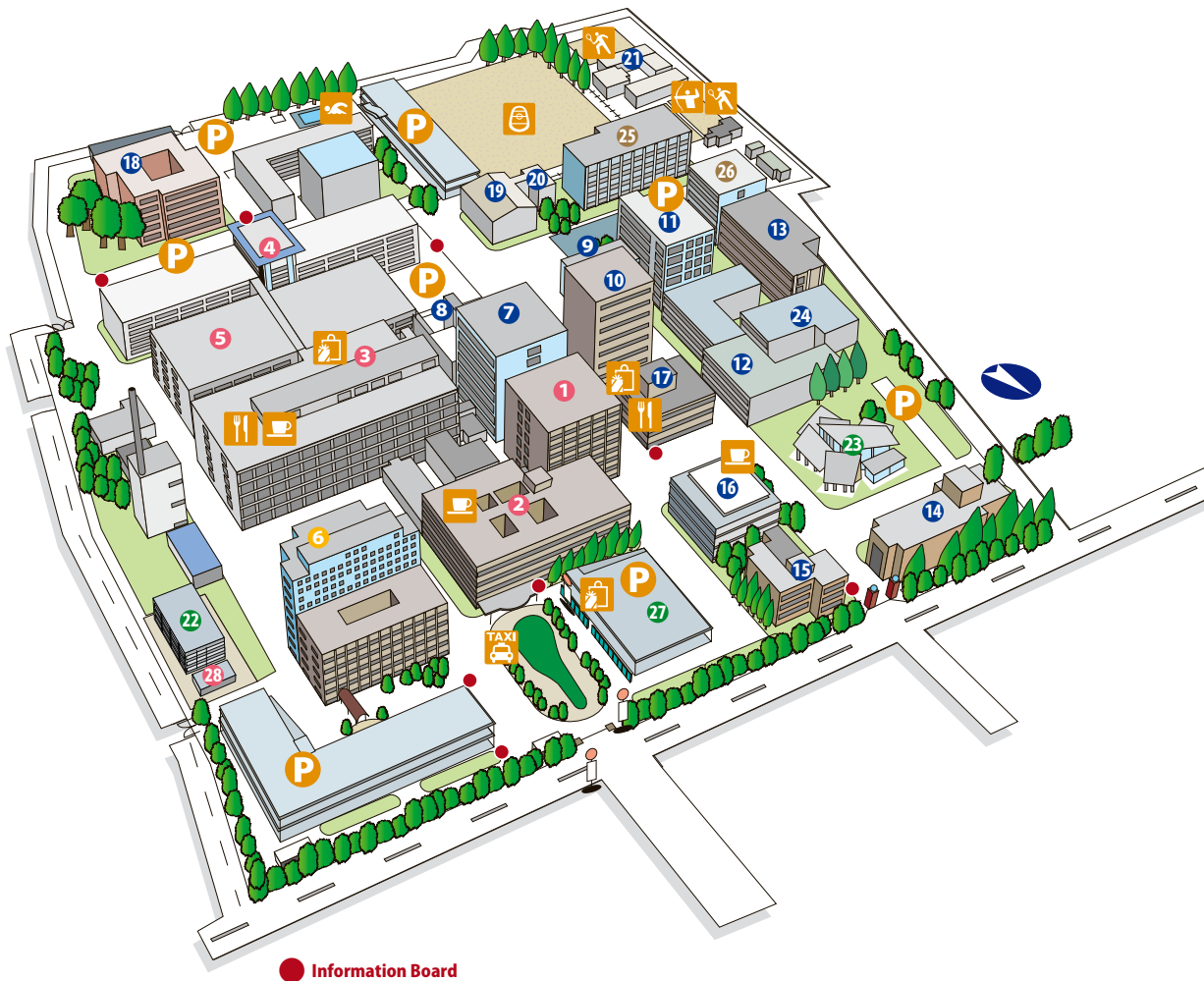
W8	Medicinal Plant Garden
W9	Okayama Univ.Incubator(Organization for small & Medium Enterprises and Regional Innovation, JAPAN)
W10	Department of Genomics and Proteomics, Advanced Science Research Center
W11	Department of Animal Resources, Tsushima South Laboratory, Advanced Science Research Center
W13	School of Agriculture Building IV
	Field Science Center
W14	Kuwanoki Dormitory for International Students
W15	Dormitory for Female Students
W16	Tsushima Lodgings
W17	Junko Fukutake Terrace
W18	International Student Shared House
W19	Good Job Center

Tsushima East Campus

E1	South Facility for Student Welfare(Peach Union)
E2	University Union
	Institute for Promotion of Education and Campus Life
	Center for Admission
	Center for Student Support and Development
E3	Health Service Center
	Building for General Education
E4	Institute for Promotion of Education and Campus Life
	Center for Common Education
	Center for Language Education
	Center for Student Support and Development
	Student Advice Section
	International Student Advising Room
	Center for Teaching Excellence
	Center for Artificial Intelligence and Mathematical Data Science
	Academic Affairs Department
	International Affairs Department
	Institute of Global Human Resource Development
	L-café

E5	Building for General Education
	Institute for Promotion of Education and Campus Life
	Center for Student Support and Development
	Disability Resources Section
	Sports Support Office
E6	Discovery Program for Global Learners
	Shimizu Memorial Gymnasium
E7	Gymnasium No. 2
E8	Martial Arts Gymnasium No.1
E9	Martial Arts Gymnasium No.2
E10	Facilities for Physical Education Class
E11	Koyukai Arts and Culture Clubs/Circles
E12	Koyukai Sports Club /Circle
E13	Koyukai Sports Club Training Facility
E14	Training Camp for Extracurricular Activities

Shikata Campus



● Information Board

Shikata Campus

1	Administration Building
2	Outpatient Clinics(Medical)
3	Central Clinics
4	Inpatient Ward
5	Advanced Medical Center
6	Dental School,Outpatient Clinics (Medical & Dental)
7	Clinical Research Building
8	Clinical Education Building & Pathology Center
9	Former Radioisotope Research Center
10	General Education Research Building
11	Medical Research Building
12	Medical Science Building Neutron Therapy Research Center
13	Medical Education Building
14	Shikata Auditorium (Former Biochemistry Building)

15	Medical Research Archives (Former Nutrition Science Building)
16	Shikata Branch Library
17	Alumni Memorial Building
18	Faculty of Health Sciences Building
19	Gymnasium
20	Martial Arts Gymnasium
21	Koyukai Club Activities Facility
22	Community based Medical Education Center Okayama (MUSCAT CUBE)
23	Junko Fukutake Hall
24	Interdisciplinary Education and Research Building
25	Department of Animal Resources,Shikata Laboratory,Advanced Science Research Center
26	Department of Radiation Research,Shikata Laboratory,Advanced Science Research Center
27	Shikata Parking Mall
28	General Triage Station

Misasa Campus

■ Institute for Planetary Materials

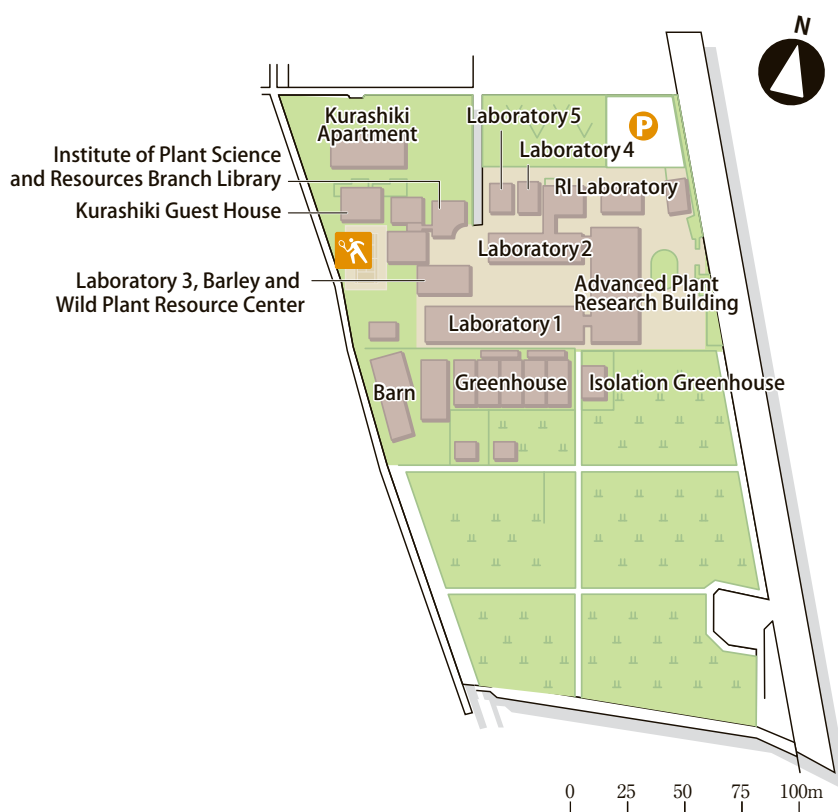


Kurashiki Campus

■ Institute of Plant Science and Resources

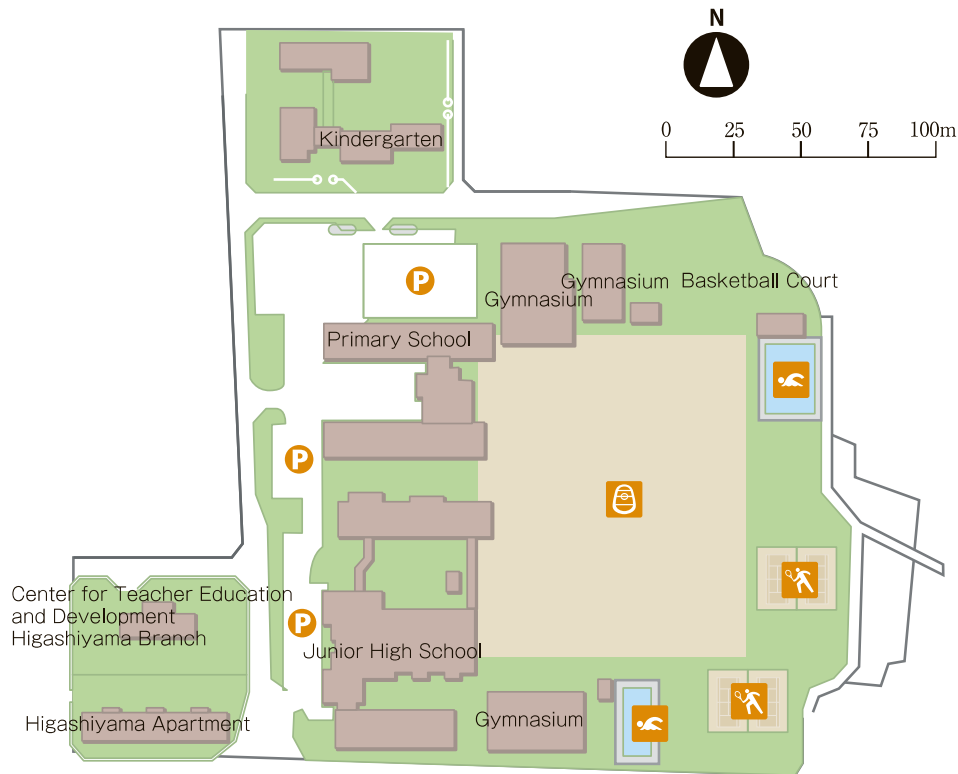
■ Barley and Wild Plant Resource Center

■ Institute of Plant Science and Resources Branch Library



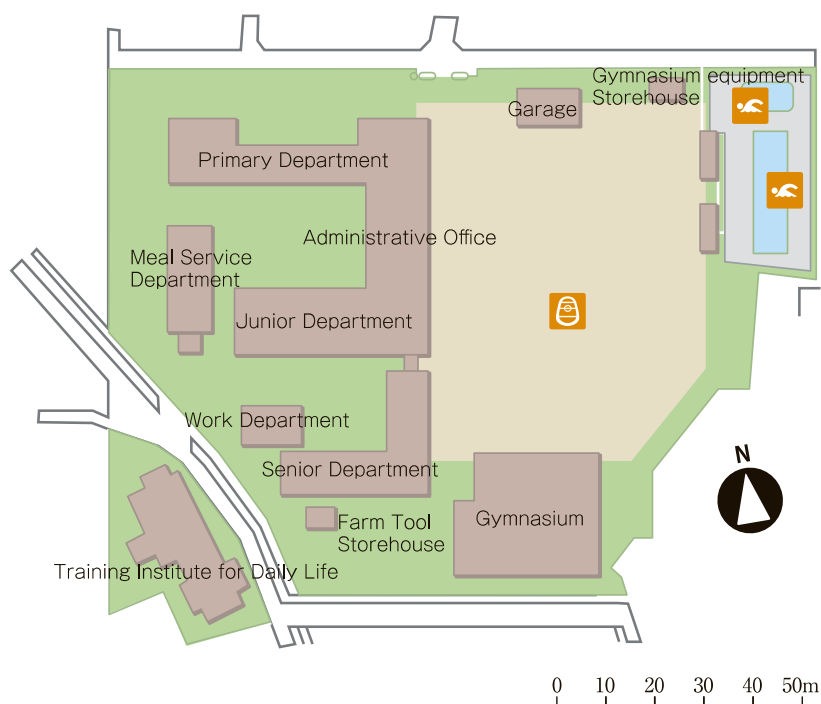
Higashiyama Campus

- Kindergarten
- Primary School
- Junio High School



Hirai Campus

- School for Special Needs Education





University Mark

OKAYAMA UNIVERSITY

1-1-1 Tsushima-naka, Kita-ku, Okayama 700-8530 Japan

Contact: Public Relations, General Affairs and Planning Department

Tel. +81-86-252-1111 Fax. +81-86-251-7294

E-mail www-adm@adm.okayama-u.ac.jp

Editorial office: Public Relations, General Affairs and Planning Department

https://www.okayama-u.ac.jp/index_e.html



Search

